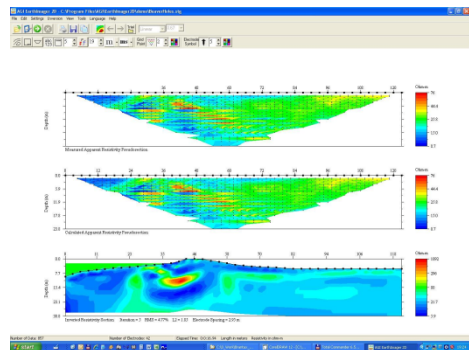




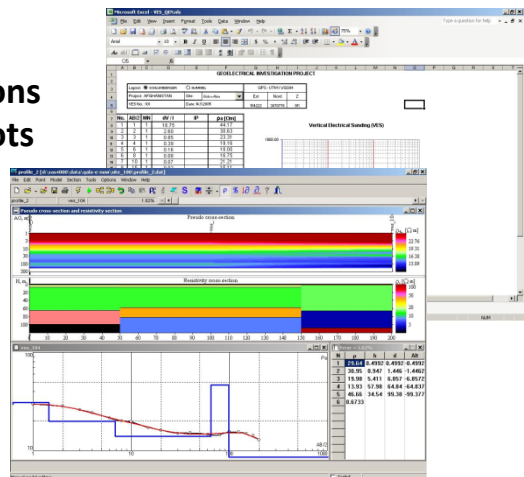
Geoelectrical investigations

The geoelectrical investigation is one of the main methods of geophysics with the help of which we can determinate the geological, hydrological and technological characteristics of the underground.



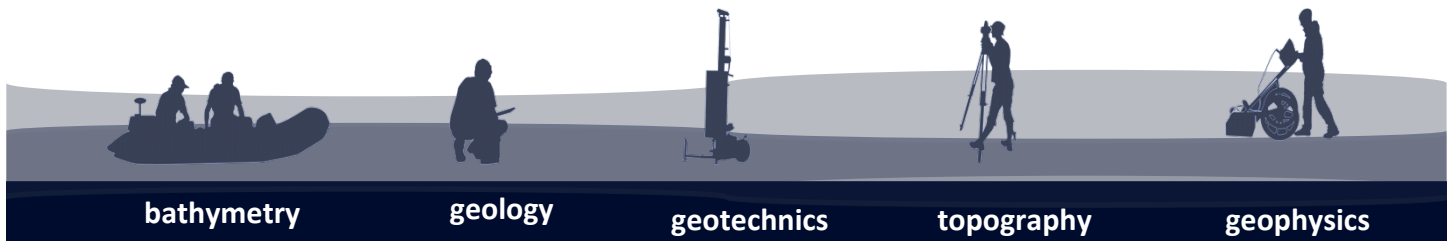
This method allows an investigation depth which varies from 10-30 m for the engineering projects and it can go until 300 m for the geological and hydrological researches.

- **Geological characteristics determinations**
- **Map drawing of the contamination spots**
- **Infiltrations in dams and dikes**
- **Identifying of the non-homogeneities**
- **Galleries and underground cavities**
- **Hydrological investigations**
- **Identifying the fissures and drifts**
- **Buried pipes**
- **Geological sections**



By adapting a device, the method can be applied also on rivers or lakes, which allows us to find out their base structure, where the regular methods are not able or they are difficult to be applied.

The multi-electrode method allows us to scan the field both in 2D and in 3D the last one being ideal for the investigation of extended surfaces.



bathymetry

geology

geotechnics

topography

geophysics