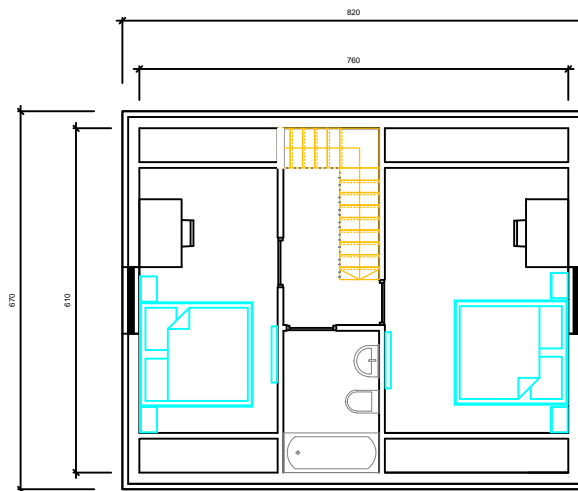


PLAN PARTER

- 1.SUFRAGERIE - 15.39MP
- 2.BAIE - 4.28MP
- 3.HOL - 3.15MP
- 4.DORMITOR - 10.40MP
- 5.BUCATARIE - 9.10MP
- TOTAL PARTER - 42.32MP



PLAN MANSARDA

- 1.DORMITOR 1 - 11.37MP
- 2.DORMITOR 2 - 15.28MP
- 3.BAIE - 4.25MP
- 4.HOL - 3.36MP
- TOTAL MANSARDA - 34.26 MP