

# Himalia Butterfly Valve with PTFE Cartridge

Where Resistance,  
Durability and  
Performance  
meet.





A photograph of a long row of large industrial stainless steel tanks in a factory. The tanks are arranged in a perspective view, receding into the distance. Each tank has a textured, dimpled surface and a large, polished stainless steel handle at the bottom. The floor is made of light-colored square tiles. The ceiling is high with industrial lighting and structural beams. A white circular callout is overlaid on the left side of the image.

**resistant  
& durable**



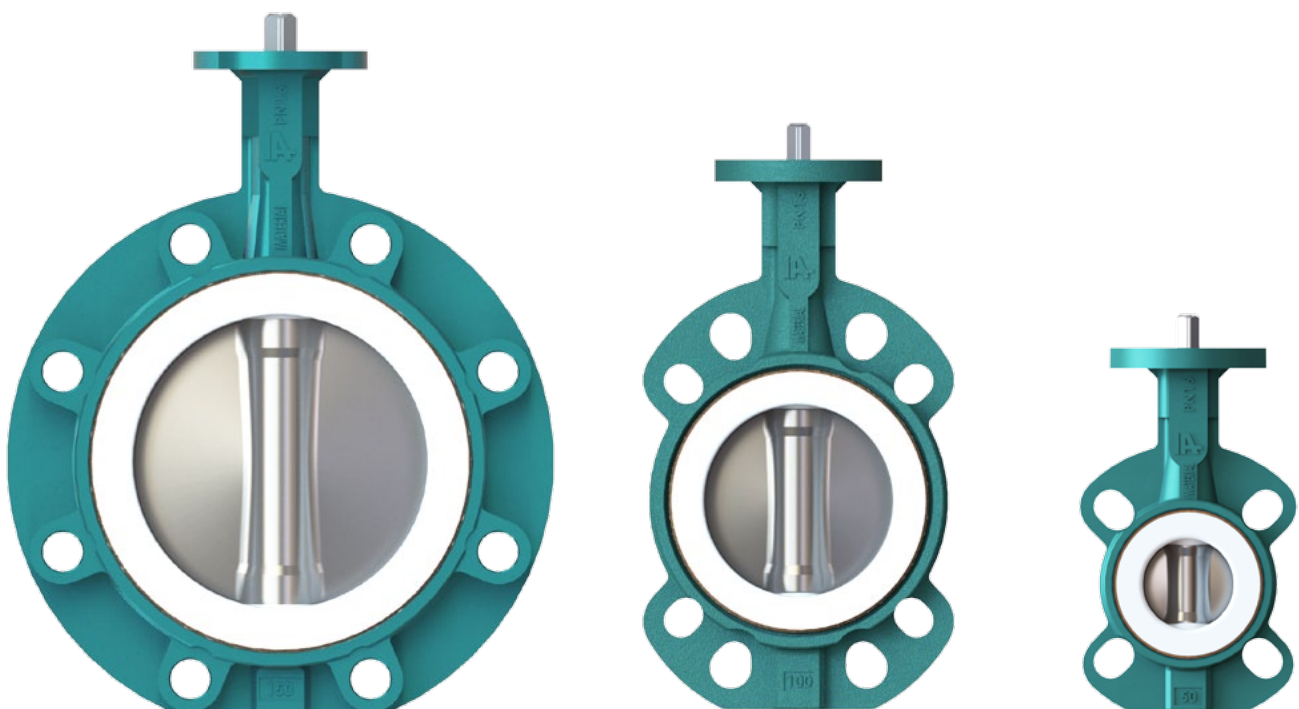
# Himalia Butterfly Valve with PTFE Cartridge — resistance, durability and performance combined.

Himalia is the new centric butterfly valve with cartridge liner for slightly corrosive media, for industrial applications and for the food and beverage industry.

Designed and built for long lasting use in highly demanding environments complements our comprehensive portfolio of industrial valves.

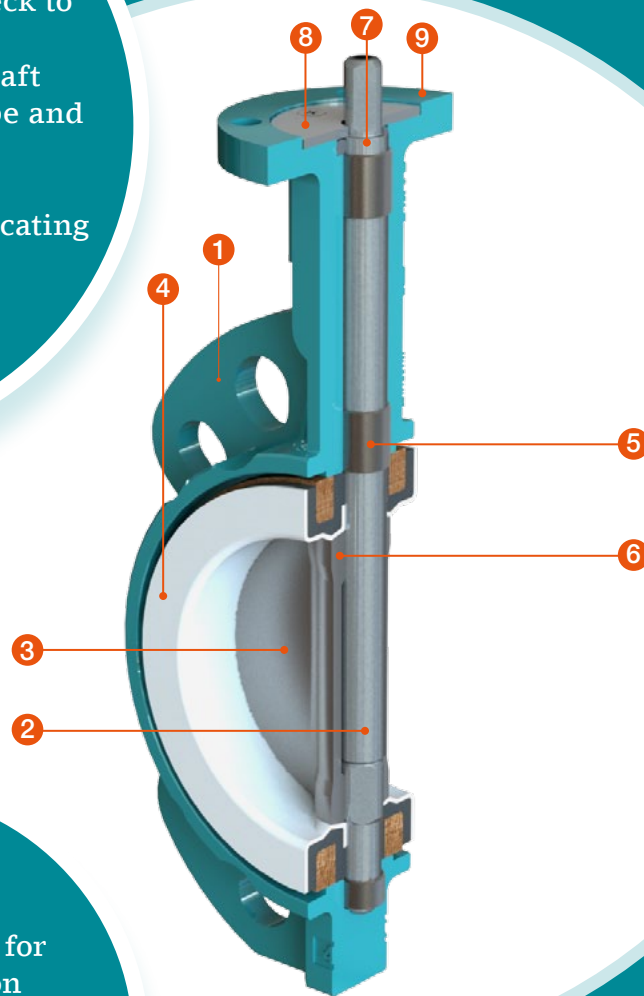
Its robust design, together with the high performance bearings, and the special cartridge liner, result in a state-of-the-art industrial valve.

The production of Himalia in Europe ensures the highest standards of quality as well as flexibility in production and delivery.



# State-of-the-art features for optimised technical performances.

1. One piece body with long neck to allow for insulation
2. Blow out proof, one piece shaft
3. Disc with aerodynamic shape and polished edges
4. PTFE Cartridge liner
5. High performance self-lubricating bushing



6. Square driven disc for optimum connection
7. External shaft sealing
8. Retaining washer
9. ISO Top flange for modular actuator connection

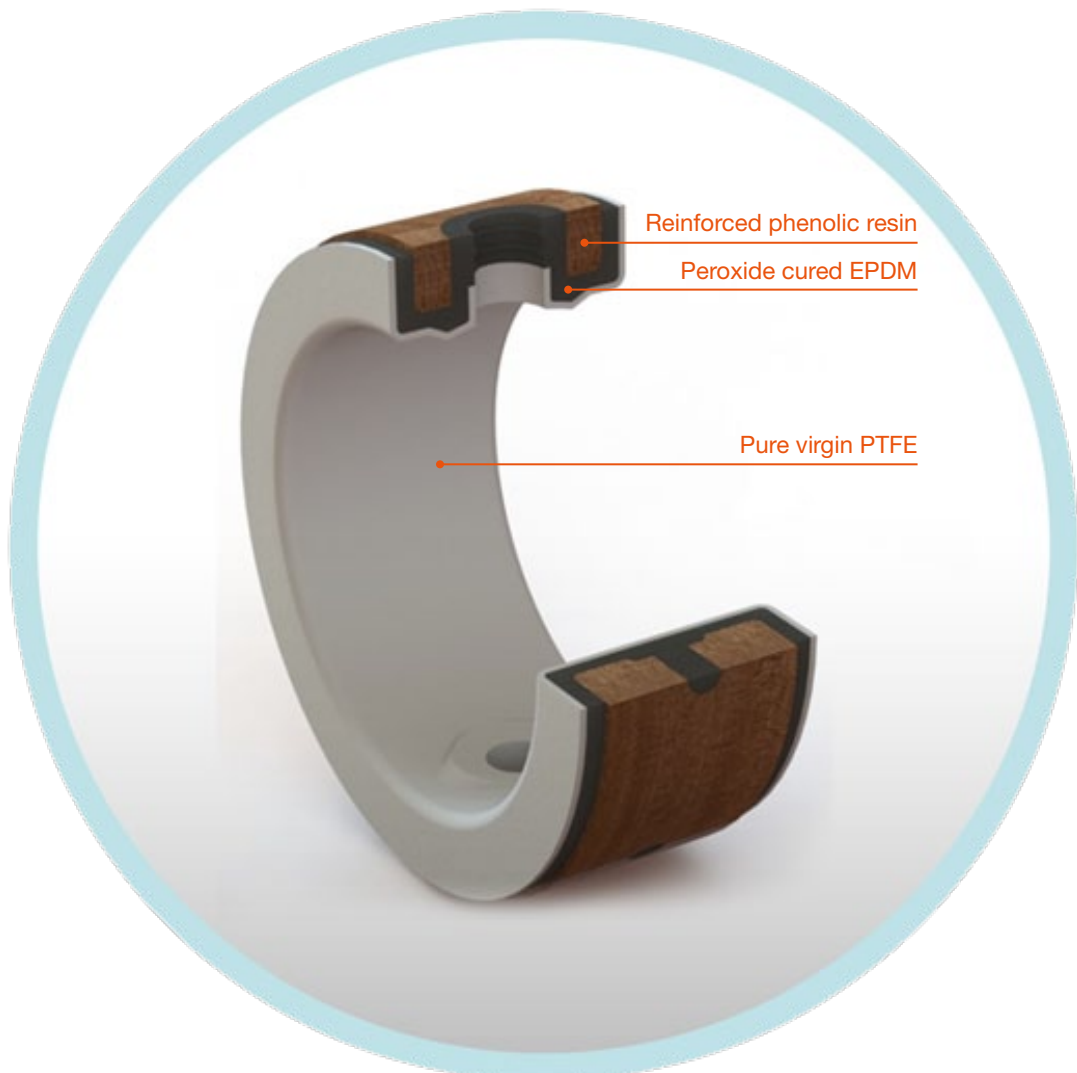
## Best design, highest performances.

Himalia cartridge liner features the perfect combination of pure virgin PTFE with FDA approval, a high temperature resistant EPDM and a phenolic resin ring.

In the cartridge liner, the PTFE and rigid phenolic resin ring are bonded with EPDM during vulcanisation to form a rigid cartridge.

The resultant cartridge features great corrosion and heat resistance properties, with low coefficient of friction and non-stick characteristics.

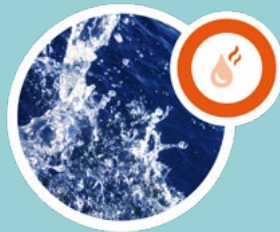
The PTFE layer of the cartridge ensures optimum hygienic conditions in all processes.



# Designed and built for Food & Beverage industry, Life Science and slightly corrosive fluids.

Himalia butterfly valve with cartridge liner stands out and makes it the ideal valve for slightly corrosive media for all industrial applications and for the Food and Beverage industry.

- Robust design and high performance bushings
- PTFE cartridge with FDA approval
- Specially design for high purity applications
- Modular actuator system



## Spa Resorts

Due to the presence of slightly aggressive fluids a PTFE cartridge has to be used.



## Cosmetics

The need to maintain high purity in the production process recommends the use of a PTFE cartridge with FDA approval.



## Food Processing

The non-stick characteristics and the high purity of the cartridge are critical.



### Distilleries

Sanitary butterfly valve with PTFE cartridge with FDA approval.



### Fertilizers

Resistance to slightly aggressive fluids and a robust design are needed.



### Breweries

High purity, low coefficient of friction and FDA approval are paramount importance.



### Bioethanol

Ideal solution for secondary lines where the most aggressive fluids are not present.

[www.interapp.net](http://www.interapp.net)

---

Headquartered in Switzerland and part of the AVK Group, InterApp develops, manufactures and markets valves and related accessories. As a customer-focused technology company, we supply comprehensive flow-control solutions to the most demanding industries around the world.

