

  
**COOPERTIRES**



Cooper Zeon XTC

**Cooper Zeon XTC** has been created with an uncompromising approach to precision and performance. Engineers and consultants have used the experience gained from years of successful racing to create this range of high performance tyres. Cooper Zeon XTC maintains optimum performance throughout, providing safety, comfort and economy.







Cooper Zeon XTC

**Three Section Tread Pattern:** The inside shoulder is designed to efficiently disperse water from under the contact patch, while at the same time its tread blocks are of computer optimised shape to dramatically reduce noise levels. The centre section of the tread pattern combines diagonal grooves with an unbroken circumferential ring to sharpen steering response and resist aquaplaning. Finally, the outer shoulder employs tread blocks designed to promote cornering stability, adding to the Zeon XTC's confidence inspiring behaviour at the limit of its grip.

**Low Noise Levels:** Designed to be comfortably within the latest EU directives on noise levels without sacrificing traction and all weather handling.

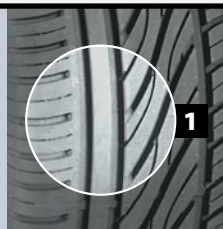
**H/V/W-Speed Rated:** Wide range of sizes to fit popular European vehicles.

RATING	KM/H	MPH
N	140	87
Q	160	99
R	170	106

RATING	KM/H	MPH
S	180	112
T	190	118
H	210	130

RATING	KM/H	MPH
V	240	149
W	270	168
Y	300	186

**1 Tri-Sector Tread Pattern:** Combines superb grip and handling with low noise levels.



For speed symbols V,W & Y load capacity reductions of up to 15% apply, above 210 Km/h for V-rated tyres, 240 Km/h for W-rated tyres & 270 Km/h for Y-rated tyres. Please consult Cooper Tire & Rubber Company for further information.

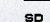
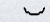
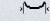

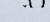


Cooper Zeon XTC

45 Series					
195/45R15	78V	6.5	6.0 - 7.5	195	557
195/45R16	80V	6.5	6.0 - 7.5	195	582
205/45R16	83V	7.0	6.5 - 7.5	206	590
215/45R17XL	91W	7.0	7.0 - 8.0	213	626
225/45R17XL	94W	7.5	7.0 - 8.5	225	634
225/45R17XL	94V	7.5	7.0 - 8.5	225	634
235/45R17	94W	8.0	7.5 - 9.0	236	644
50 Series					
195/50R15	82V	6.0	5.5 - 7.0	201	577
195/50R15	82H	6.0	5.5 - 7.0	201	577
205/50R15	86V	6.5	5.5 - 7.5	214	587
205/50R16	87W	6.5	5.5 - 7.5	214	612
205/50R16	87V	6.5	5.5 - 7.5	214	612
225/50R16	92W	7.0	6.0 - 8.0	233	632
225/50R16	92V	7.0	6.0 - 8.0	233	632
205/50R17XL	93W	6.5	5.5 - 7.5	214	638
215/50R17	91W	7.0	6.0 - 7.5	226	648
55 Series					
185/55R14	82H	6.0	5.0 - 6.5	194	560
185/55R15	82V	6.0	5.0 - 6.5	194	585
185/55R15	82H	6.0	5.0 - 6.5	194	585
195/55R15	85V	6.0	5.5 - 7.0	201	595
195/55R15	85H	6.0	5.5 - 7.0	201	595
205/55R15	88V	6.5	5.5 - 7.5	214	607
205/55R16	91W	6.5	5.5 - 7.5	214	632
205/55R16	91V	6.5	5.5 - 7.5	214	632
205/55R16	91H	6.5	5.5 - 7.5	214	632
215/55R16XL	97W	7.0	6.0 - 7.5	226	642
215/55R16XL	97V	7.0	6.0 - 7.5	226	642
215/55R16XL	97H	7.0	6.0 - 7.5	226	642
225/55R16	95W	7.0	6.0 - 8.0	233	654
225/55R16	95V	7.0	6.0 - 8.0	233	654
60 Series					
165/60R14	75H	5.0	4.5 - 6.0	170	554
185/60R14	82H	5.5	5.0 - 6.5	189	578
195/60R14	86H	6.0	5.5 - 7.0	201	590
185/60R15	84H	5.5	5.0 - 6.5	189	603
195/60R15	88V	6.0	5.5 - 7.0	201	615
195/60R15	88H	6.0	5.5 - 7.0	201	615
205/60R15	91V	6.0	5.5 - 7.5	209	627
205/60R15XL	95H	6.0	5.5 - 7.0	209	627
205/60R16	92V	6.0	5.5 - 7.0	209	652
65 Series					
175/65R14	82H	5.0	5.0 - 6.0	177	584
185/65R14	86H	5.5	5.0 - 6.5	189	596
195/65R14	89H	6.0	5.5 - 7.0	201	610
185/65R15	88H	5.5	5.0 - 6.5	189	621
195/65R15	91V	6.0	5.5 - 7.0	201	635
195/65R15	91H	6.0	5.5 - 7.0	201	635
195/65R15XL	95H	6.0	5.5 - 7.0	201	635
205/65R15	94V	6.0	5.5 - 7.5	209	647
205/65R15	94H	6.0	5.5 - 7.5	209	647
70 Series					
185/70R14	88H	5.5	4.5 - 6.0	189	616

**XL** Extra Load

**SYMBOLS KEY**

-  SD SERVICE DESCRIPTION
-  RECOMMENDED RIM WIDTH
-  APPROVED RIM WIDTH - MIN/MAX
-  SECTION WIDTH
-  OVERALL DIAMETER