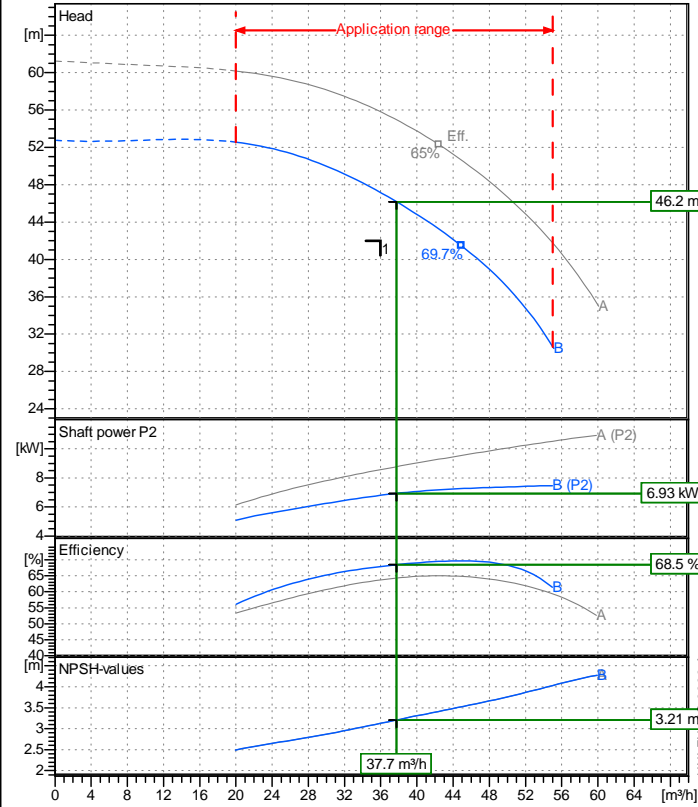


Receiver

From

 Company name
 Respons. Department
 Person in charge
 Phone number
 Fax no
 E-mail address

 SC MASTER ENGINEERING SRL
 Tehnic
 BOGDAN, POPA
 0742828049
 -
 bogdan.popa@master-eng.ro

Operating data specification

Nominal flow	m ³ /h 36
Nominal head	m 42
Static head	m 0
NPSH - v alue of plant	m 0
Inlet pressure	bar 0.09793
Fluid	Water, pure
Operating temperature t A	°C 20
Density at t A	kg/dm ³ 0.9983
Kin. viscosity at t A	mm ² /s 1.005

Pump

Pump name	IR40-200NB	
Size	65/40/200	
Design		
Speed 1/min	2900	No of stages 1
Impeller type		
Flow	Nominal	m ³ /h 37.7
	Max-	m ³ /h 55.1
	Min-	m ³ /h 20
Head	Nominal	m 46.2
	Max-	m 52.6
	Min-	m 30.5
Head H(Q=0)	m 52.8	
NPSH 3%	m 3.21	
Max. working pressure	bar 5.26	
Shaft power	kW 6.93	
Efficiency	% 68.5	
Max absorbed power	kW 7.4646	

Materials Pump

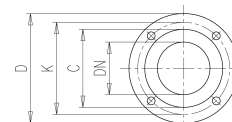
Shaft	Stainless steel AISI 431 (1.4057)
Impeller	Cast iron EN-GJL-250
Pump body	Cast iron EN-GJL-250
Disco porta tenuta	Cast iron EN-GJL-250
Gasket	Natural fiber
Mechanical seal	BVEG (Grafito/Ossido Allumina/EPDM)

Motor	Frame size	112 M		
Manufacturer / Type	SAER	112 M 2 - 7,5		
Rated power	kW	7.5	Efficiency 4/4	0 %
Electric current	A		Speed	1/min 2950
Electric voltage	V	400 V	3~	Hz 50
Starting mode	Unknown			
Degree of protection	IP 55	Insulation class	F	

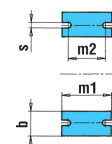
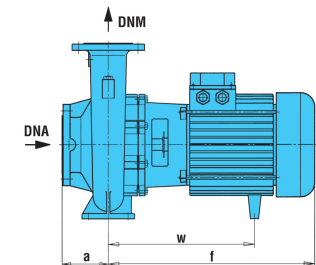
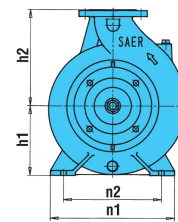
Remarks:

Dimensions in mm

a	100
b	50
DNA	65
DNM	40
f	423.5
h1	160
h2	180
m1	100
m2	70
n1	265
n2	212
s	14
w	305



C	88	C	122
D	150	D	185
DN	40	DN	65
K	110	K	145
n°	4	n°	4
ø	19	ø	19

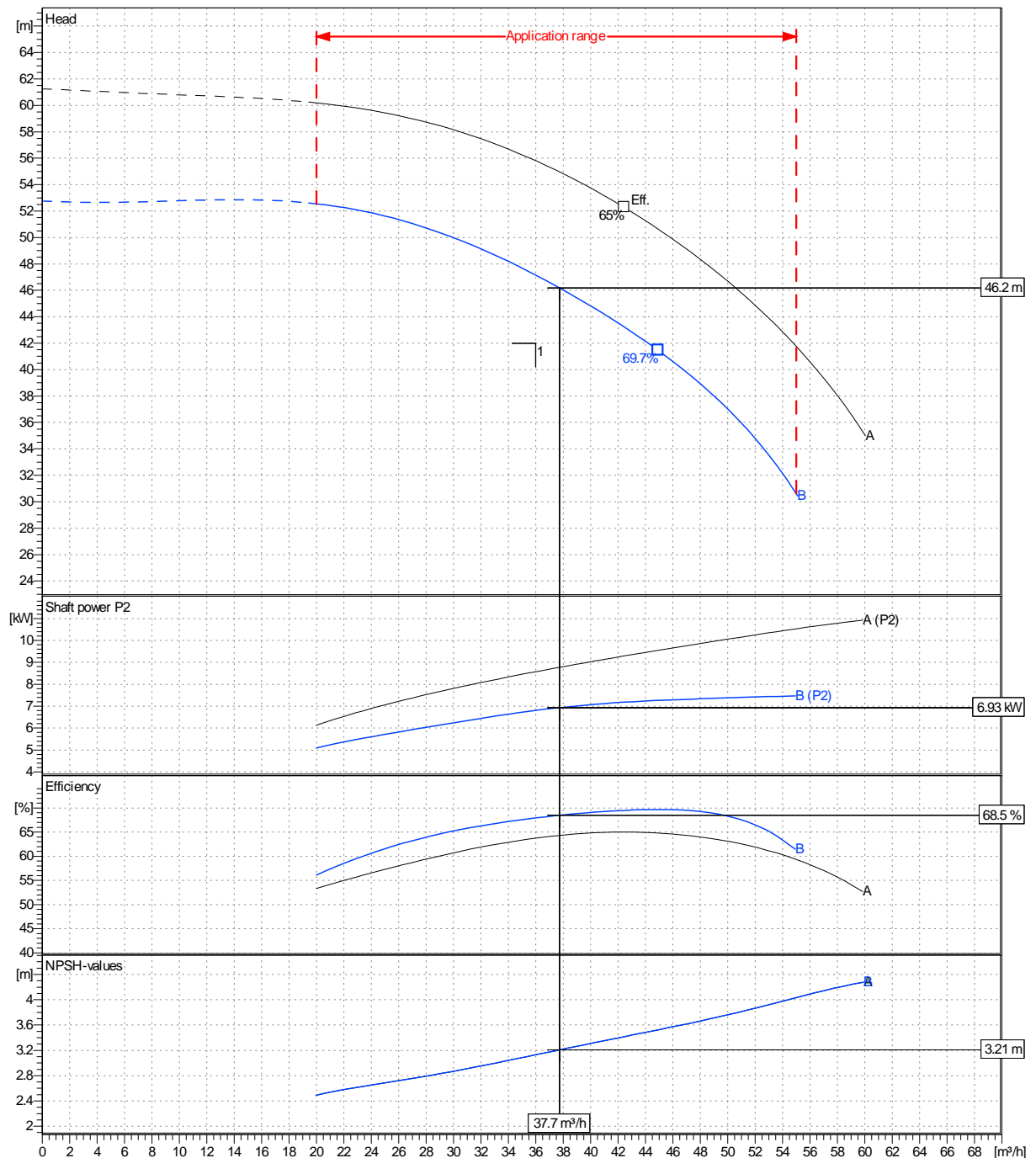


Company name
 Respons. Department
 Person in charge
 Phone number
 Fax no
 E-mail address

Receiver	From
	SC MASTER ENGINEERING SRL
	Tehnic
	BOGDAN, POPA
	0742828049
	-
	bogdan.popa@master-eng.ro

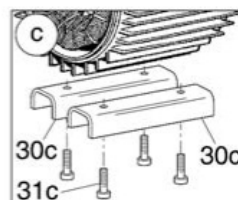
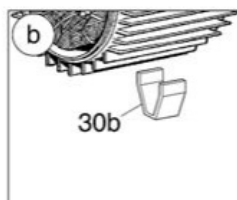
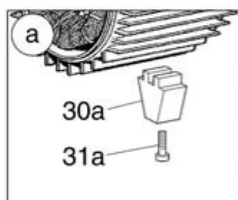
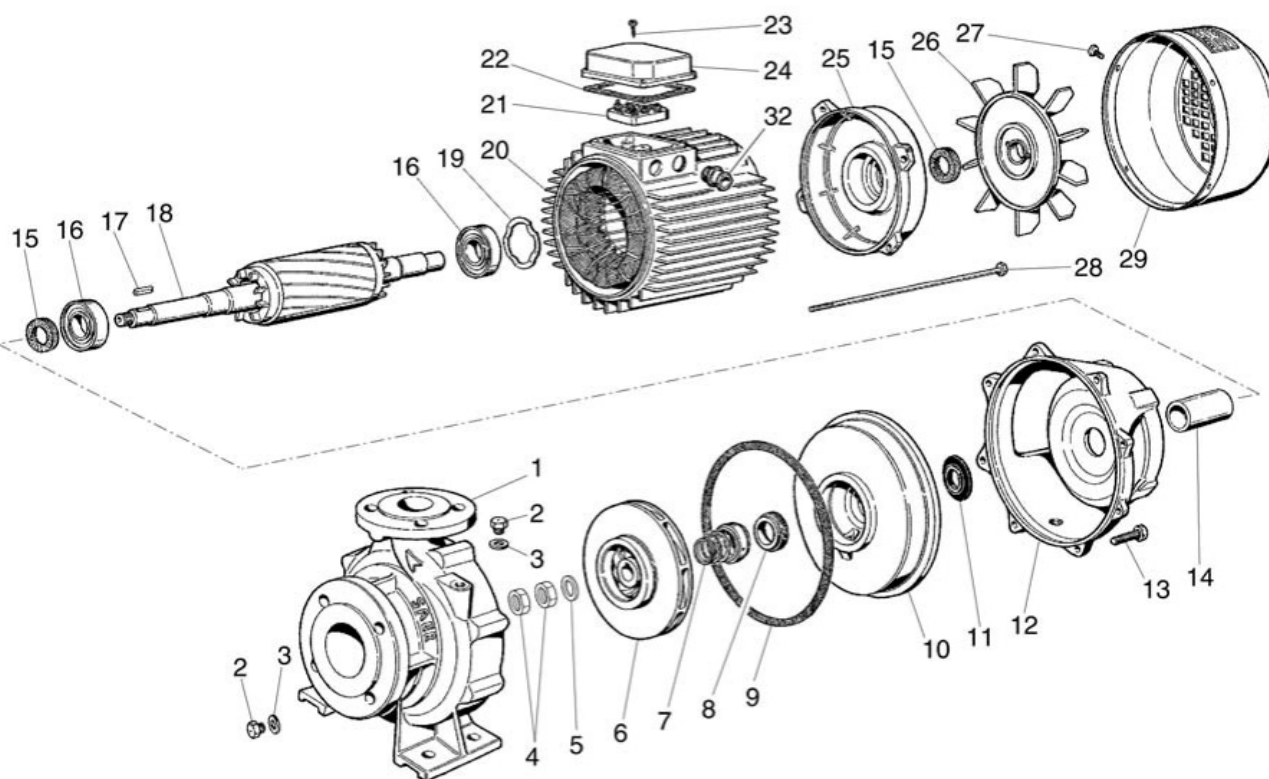
Operating area	Flow	Head	Impeller type
Operating data specification	36 m ³ /h	42 m	Impeller construction
			Closed
Pump data	37.7 m ³ /h	46.2 m	Sense of rotation
			Clockwise from the drive end
			Outlet width
			DN 40
	Flow	Head	Shaft power P2
	Min. Max. η Max.	H(Q=0) η Max.	P2(Q=0) Max. η Max.
	m ³ /h m ³ /h m ³ /h	m m	kW kW kW
	20 55 44.9	52.8 41.4	7.46 7.26
			Speed
			1/min 2900
			Frequency
			Hz 50 Hz

Performance data based to: Water, pure [100%]; 20°C; 0.998kg/dm³; 1mm²/s UNI EN ISO 9906-A



Company name
Respons. Department
Person in charge
Phone number
Fax no
E-mail address

SC MASTER ENGINEERING SRL
Tehnic
BOGDAN, POPA
0742828049
-
bogdan.popa@master-eng.ro



Project

Project ID

Created by
BOGDAN, POPA

Created on
2017-04-18

Last update