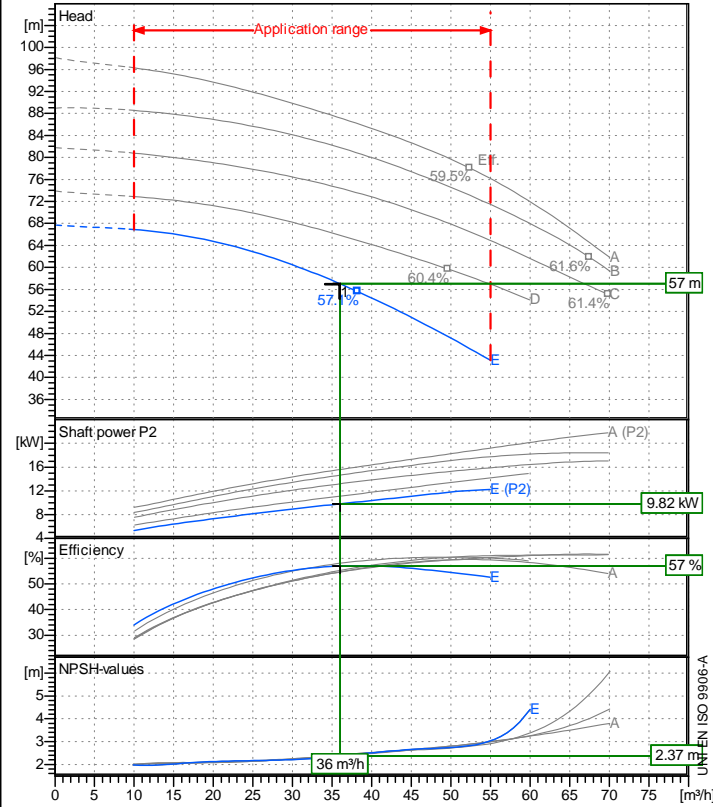


Receiver

From

 Company name
 Respons. Department
 Person in charge
 Phone number
 Fax no
 E-mail address

 SC MASTER ENGINEERING SRL
 Tehnic
 BOGDAN, POPA
 0742828049
 -
 bogdan.popa@master-eng.ro


Operating data specification

Nominal flow	m ³ /h 36
Nominal head	m 57
Static head	m 0
NPSH - v value of plant	m 0
Inlet pressure	bar 0.09793
Fluid	Water, pure
Operating temperature t A	°C 20
Density at t A	kg/dm ³ 0.9983
Kin. viscosity at t A	mm ² /s 1.005

Pump

Pump name	IR40-250NE	
Size	65/40/250	
Design		
Speed 1/min	2900	No of stages 1
Impeller type		
Flow	Nominal	m ³ /h 36
	Max-	m ³ /h 55
	Min-	m ³ /h 10
Head	Nominal	m 57
	Max-	m 66.9
	Min-	m 43.1
Head H(Q=0)	m 67.7	
NPSH 3%	m 2.37	
Max. working pressure	bar 6.73	
Shaft power	kW 9.82	
Efficiency	% 57	
Max absorbed power	kW 12.245	

Materials Pump

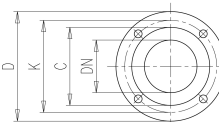
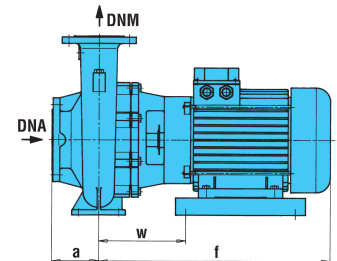
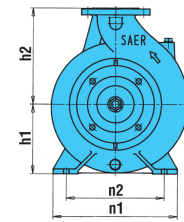
Shaft	Stainless steel AISI 431 (1.4057)
Impeller	Cast iron EN-GJL-250
Pump body	Cast iron EN-GJL-250
Disco porta tenuta	Cast iron EN-GJL-250
Gasket	Natural fiber
Mechanical seal	BVEG (Grafite/Ossido Allumina/EPDM)

Motor	Frame size	132 S		
Manufacturer / Type	SAER	132 S 2 - 12		
Rated power	kW	12.5	Efficiency 4/4	0 %
Electric current	A		Speed	1/min 2950
Electric voltage	V	400 V	3~	Hz 50
Starting mode	Unknown			
Degree of protection	IP 55	Insulation class	F	

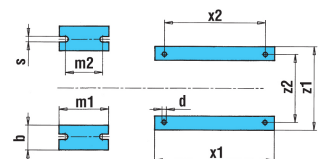
Remarks:

Dimensions in mm

a	100	z1	258
b	65	z2	216
d	12		
DNA	64		
DNM	40		
f	525.5		
h1	180		
h2	225		
m1	125		
m2	95		
n1	320		
n2	250		
s	14		
w	166.5		
x1	320		
x2	280		



C	88	C	122
D	150	D	185
DN	40	DN	65
K	110	K	145
n°	4	n°	4
ø n	19	ø n	19

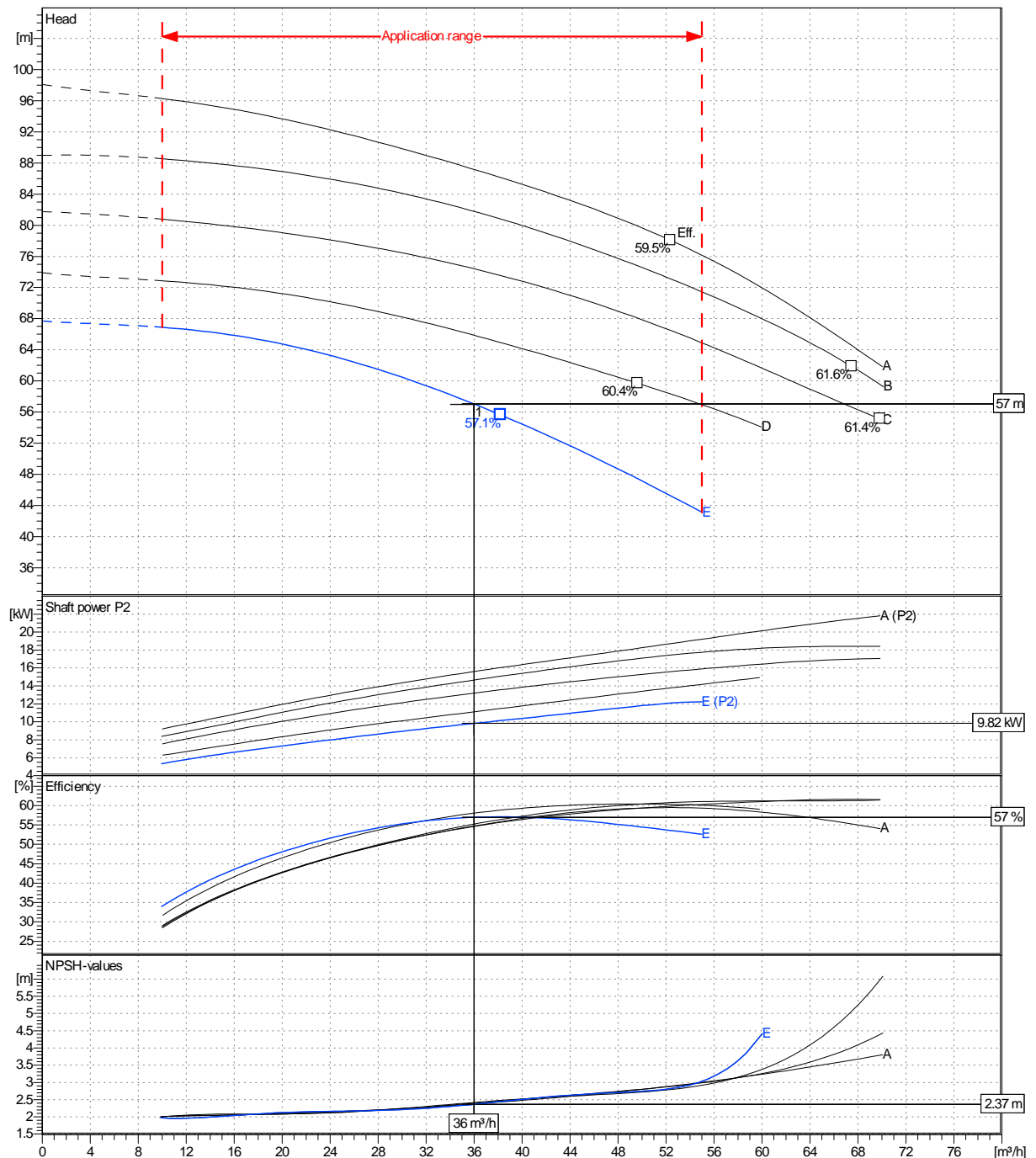


Receiver	From
Company name	SC MASTER ENGINEERING SRL
Respons. Department	Tehnic
Person in charge	BOGDAN, POPA
Phone number	0742828049
Fax no	-
E-mail address	bogdan.popa@master-eng.ro

Operating area	Flow	Head	Impeller type
Operating data specification	36 m ³ /h	57 m	Impeller construction
Pump data	36 m ³ /h	57 m	Sense of rotation
			Outlet width
			DN 40
	Flow	Head	Shaft power P2
	Min. Max. η Max.	H(Q=0) η Max.	P2(Q=0) Max. η Max.
	m ³ /h m ³ /h m ³ /h	m m	kW kW kW
	10 55 38.2	67.7 55.6	12.2 10.1
			Speed
			1/min 2900
			Frequency
			Hz 50 Hz

Performance data based to: Water, pure [100%] ; 20°C; 0.998kg/dm³; 1mm²/s

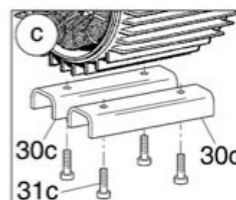
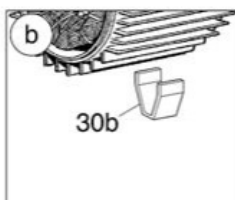
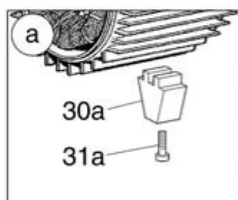
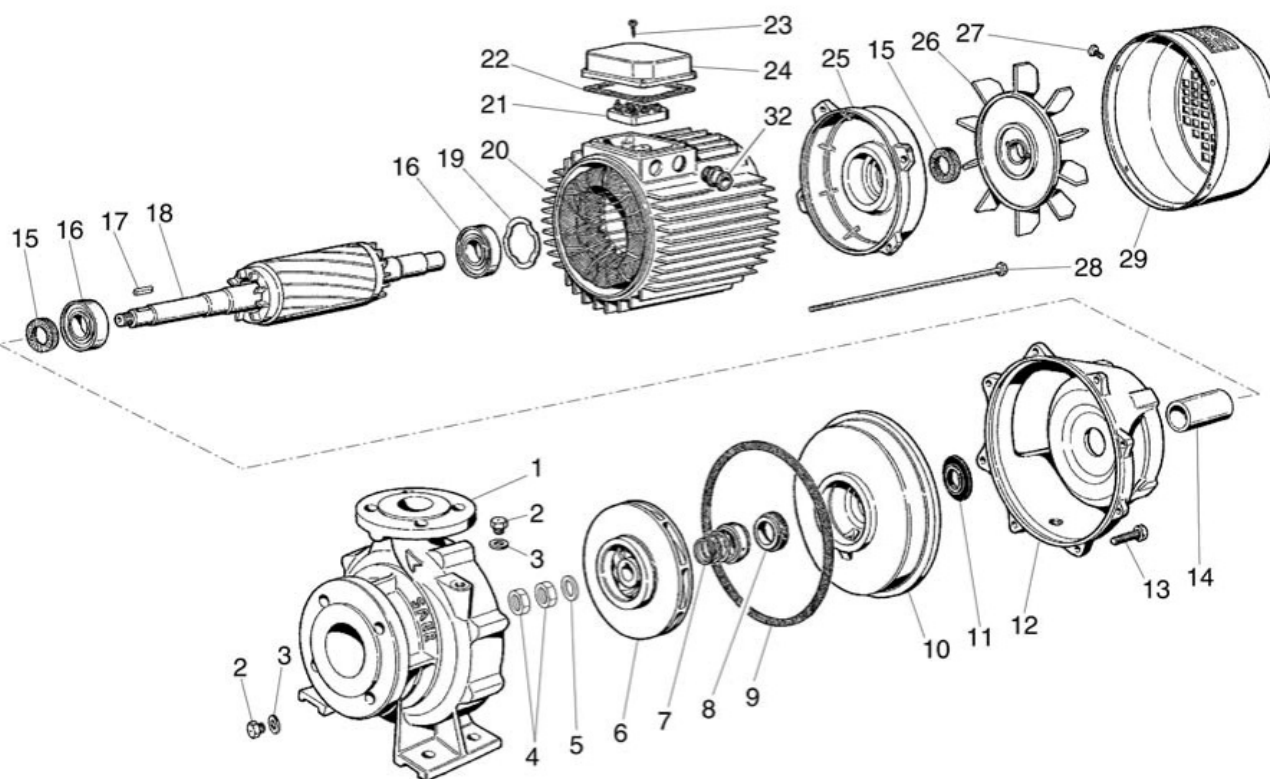
UNI EN ISO 9906-A



Project	Project ID	Created by BOGDAN, POPA	Created on 2017-02-13
			Last update

Company name
Respons. Department
Person in charge
Phone number
Fax no
E-mail address

SC MASTER ENGINEERING SRL
Tehnic
BOGDAN, POPA
0742828049
-
bogdan.popa@master-eng.ro



Project

Project ID

Created by
BOGDAN, POPA

Created on
2017-02-13

Last update