
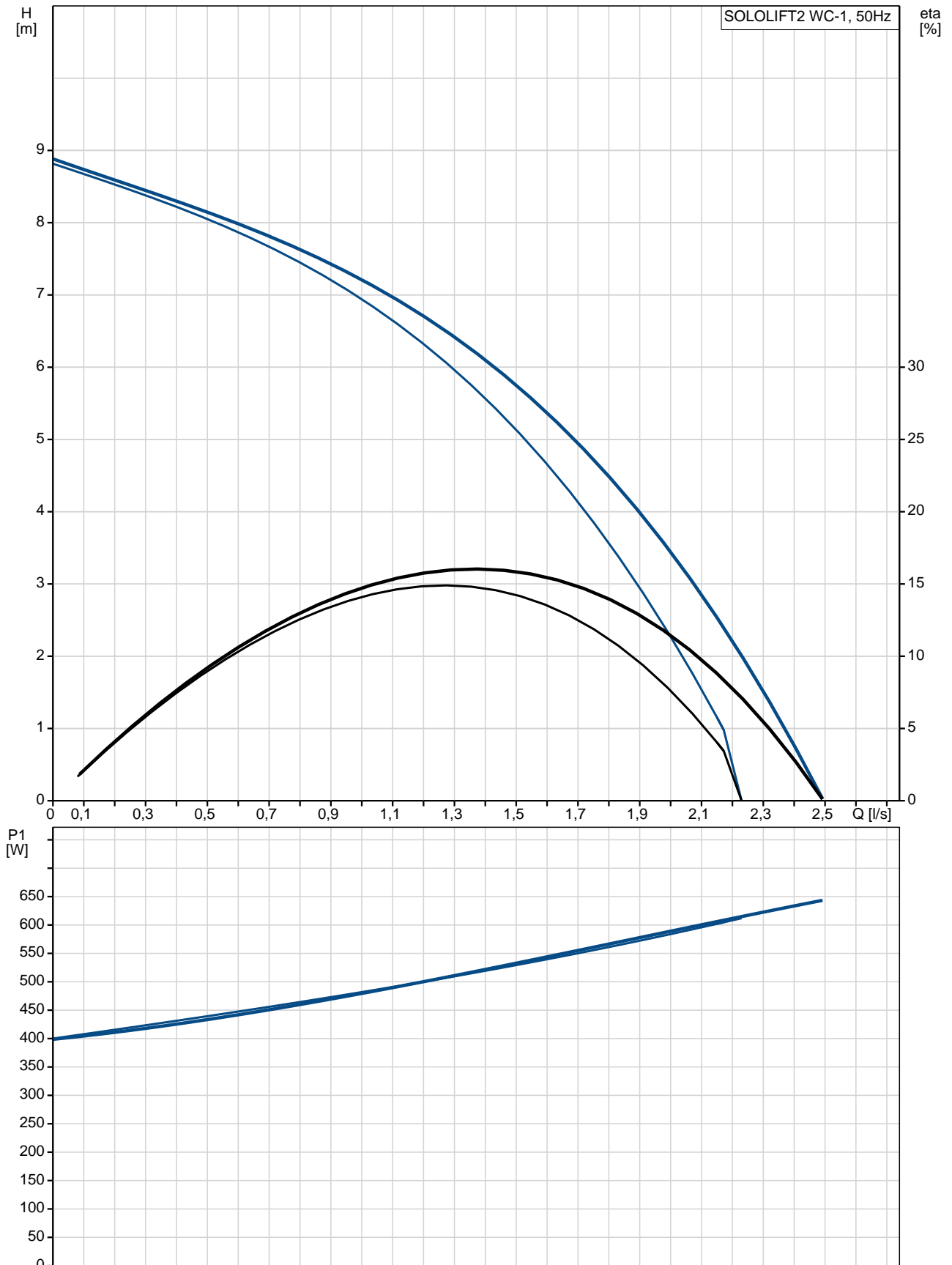


| Pozitie | Cant. | Descriere |
|---------|-------|---|
| | 1 | <p>SOLOLIFT2 WC-1</p>  <p style="text-align: center;">Not ! Poza de produs poate diferi de produsul actual</p> <p>Nr. Produs: La cerere</p> <p>Sololift2 WC-1 is a small, compact automatic lifting station suitable for pumping of wastewater off places in private dwellings where wastewater cannot be led directly to the sewer by means of a natural downward slope.</p> <p>Sololift2 WC-1 is suitable for pumping wastewater from a toilet containing toilet paper and faeces with an additional connection on the lid for e.g. a washbasin.</p> <p>The pumping of liquids containing other material may cause faults and limit the scope of our guarantee.</p> <p>Sololift2 WC-1 is typically used to dewater:</p> <ul style="list-style-type: none"> • toilet and washbasin in basements below sewer level, in connection with the renovation or modernisation of existing buildings, where the location may be remote from the main soil pipe so that a natural slope cannot be established. <p>The compact lifting station is equipped with</p> <ul style="list-style-type: none"> - Cable with or without plug (see technical data) - Horizontal or vertical fastening possibility of discharge hose connector with several adaptors for pipes with Ø22-40mm <p>-integrated non return valve</p> <ul style="list-style-type: none"> - Dry and high performance motor unit incl. thermal protection, pressure switch and controller - DN100 toilet connection hose - Flexible connectors for inlet (adjustable in height) of pipes Ø36 or 40 - Slot for an alarm board with buzzer (accessory) - Manual anti clogging function and separate drain connection for service - Venting valve with overflow protection - Uplift fixation clips <p>Design according to EN12050-3 and production inspection by external institute with unique features focused on quick installation, long lasting operation and easy clean service.</p> <p>Note: The discharge adaptor can be mounted vertical or horizontal. Vertical installation increase the flow (s. databooklet and curves)</p> <p>Liquid: Temperatura maxim a lichidului: 50 °C Densitate: 998.2 kg/m³</p> <p>Technical: Aprob ri pe etichet : CE,TR,LGA,VDEEMV,VDE Toleran a curbilor: ISO9906:2012 3B</p> <p>Materials: Rezervor: PLASTIC</p> |

| Pozi ie | Cant. | Descriere |
|---------|-------|--|
| | | <p>Instala ie:</p> <p>Aspira ie pomp : 32/36/40, DN 100 Refulare pomp : 22/25/28/32/36/40 Num r de conductori: 3X0,75MM2</p> <p>Electrical data:</p> <p>Puterea de intarare - P1: 620 W Frecven a re elei electrice: 50 Hz Tensiune nominal : 1 x 220-240 V Curent nominal: 3 A Cos fi - factor de putere: 0,92 Tura ie nominal : 2800 rpm Grad de protec ie (IEC 34-5): IP44 Clas de izolare (IEC 85): F Lungimea cablului: 1.2 m Tip cablu: H05VV-F Tip de conectare cablu: SCHUKO</p> <p>Others:</p> <p>Greutate net : 7.25 kg Greutate brut : 9.75 kg</p> |

La cerere SOLOLIFT2 WC-1 50 Hz



| Descriere | Valori i tipuri |
|-----------|-----------------|
|-----------|-----------------|

Informa ii generale:

| | |
|---------------|----------------|
| Nume produs:: | SOLOLIFT2 WC-1 |
| Nr. produs:: | La cerere |
| Numărul EAN:: | La cerere |
| Pre : | La cerere |

Technical:

| | |
|---------------------------|----------------------|
| În l ime de pompare max.: | 8.5 m |
| Aprob ri pe etichet : | CE,TR,LGA,VDEEMV,VDE |
| Toleran a curbelor: | ISO9906:2012 3B |

Materials:

| | |
|-----------|---------|
| Rezervor: | PLASTIC |
|-----------|---------|

Instala ie:

| | |
|----------------------|-------------------|
| Aspira ie pomp : | 32/36/40, DN 100 |
| Refulare pomp : | 22/25/28/32/36/40 |
| Num r de conductori: | 3X0,75MM2 |

Liquid:

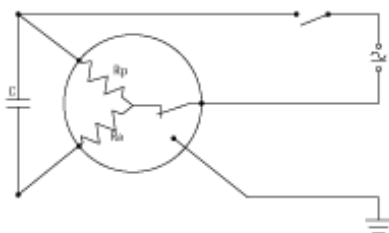
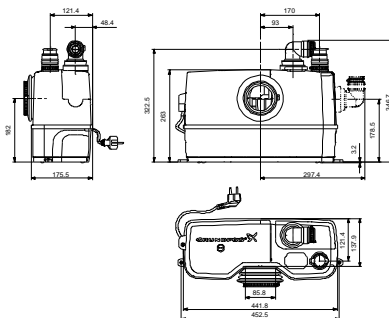
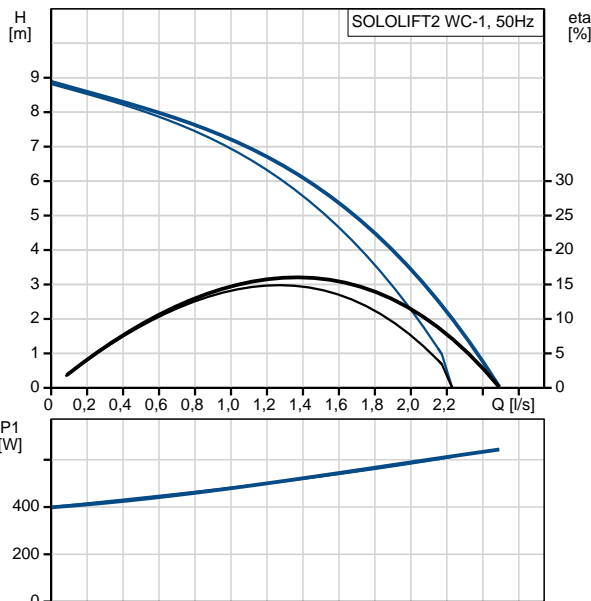
| | |
|---------------------------------|-------------------------|
| Temperatura maxim a lichidului: | 50 °C |
| Densitate: | 998.2 kg/m ³ |

Electrical data:

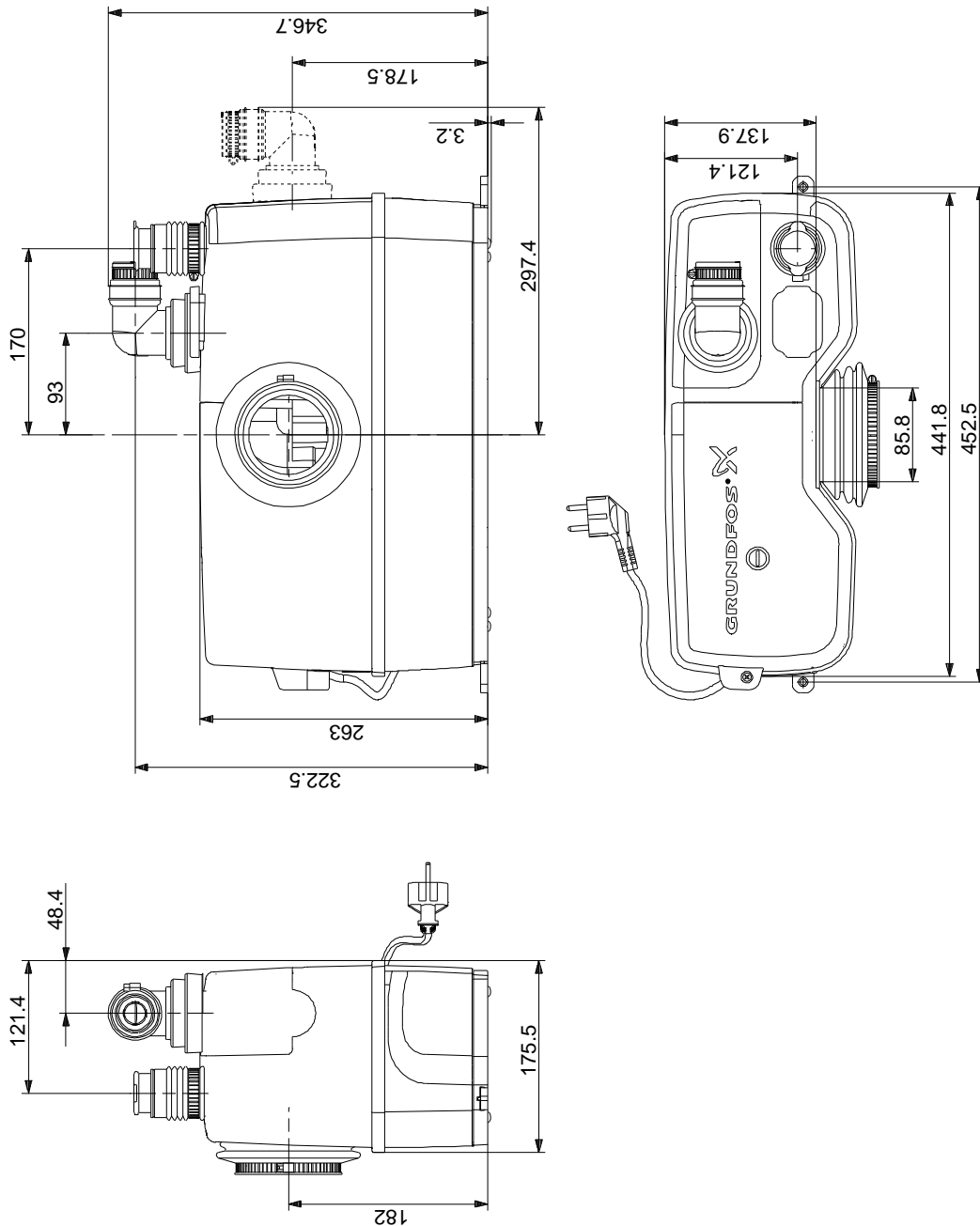
| | |
|-------------------------------|--------------------|
| Puterea de intarare - P1: | 620 W |
| Frecven a re elei electrice: | 50 Hz |
| Tensiune nominal : | 1 x 220-240 V |
| Curent nominal: | 3 A |
| Cos fi - factor de putere: | 0,92 |
| Tura ie nominal : | 2800 rpm |
| Grad de protec ie (IEC 34-5): | IP44 |
| Clas de izolare (IEC 85): | F |
| Protec ie termic : | THERMIK S06-150-05 |
| Lungimea cablului: | 1.2 m |
| Tip cablu: | H05VV-F |
| Tip de conectare cablu: | SCHUKO |

Others:

| | |
|-----------------|---------------|
| Greutate net : | 7.25 kg |
| Greutate brut : | 9.75 kg |
| Gam produs: | Interna ional |

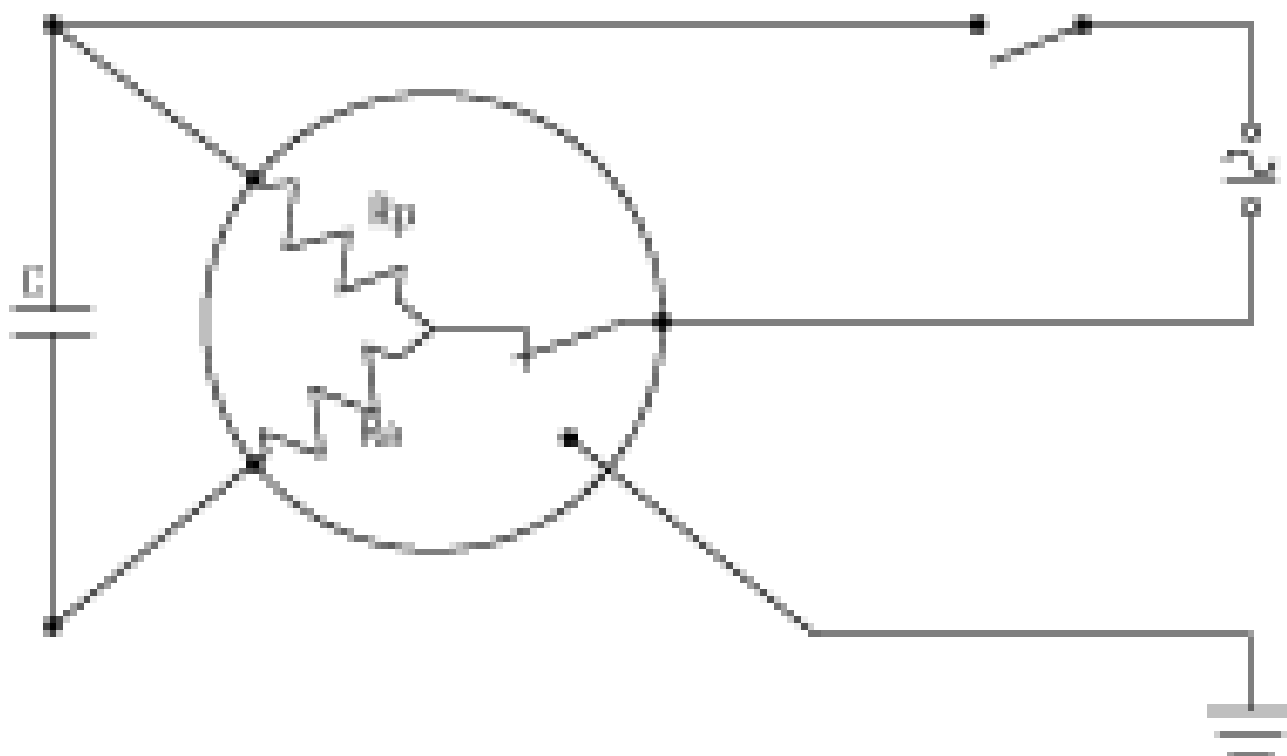


La cerere SOLOLIFT2 WC-1 50 Hz



Note! All units are in [mm] unless others are stated.
Disclaimer: This simplified dimensional drawing does not show all details.

La cerere SOLOLIFT2 WC-1 50 Hz



Not ! Toate unit ile sunt în [mm] dac nu altele sunt condi iile.