

SteelTailor™ POWER

Portable CNC Cutting Machines

F4
Friendly 4



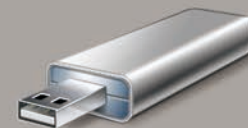
- **64M Memory Supports Nesting!**
- **User Friendly!**
- **Cutting Software for free!**
- **72h Pre-Delivery Test!**
- **Professional Customer Service, 24h/7d!**

- Support Flame & Plasma
- Affordable & Easy to Use
- Portable & Light weight
- Precision: 0.2mm
- User's Manual in English, Spanish, Russian
- Perfect Anti-Interference
- Extendable Rail Frame!



ISO9001:2000
ISO14000

PC



Memory Key



Input Power	180W
Electric Voltage	220V AC/110V AC, 60/50HZ
Cutting Thickness	Flame: 5-150mm Plasma: Depend on plasma source
Effective Cutting Range	Standard size: X:1200mm,Y:2000mm, if requested, it could be customized with width 1.5m/1.8m, length 3m/4m/5m/...15m(max)
Modes of Cutting	Flame or Plasma
Combustive Gas	Oxygen
Combustive Gas Pressure	Max: 1.5MPa
Cutting Speed	0-600mm/min(Flame), 0-6000mm/min(Plasma)
Total Machine Weight	70.5kg
Automatic Torch Height Control	Option
Cutting Software	IBE cncCUT Basic version FastCAM Standard version (optional) Hypertherm Nest Master Basic version (optional)

Distributed By:

SteelTailor™ Power Series Portable Cutting Machines

SteelTailor Power is a best seller series of SteelTailor family portable CNC cutting machines. It is an innovative version of portable CNC cutting machines. Within 10 years experience of our Steeltailor portable CNC cutting machines, this classical version integrated many new features to better meet your needs.

Powerful CNC Controller

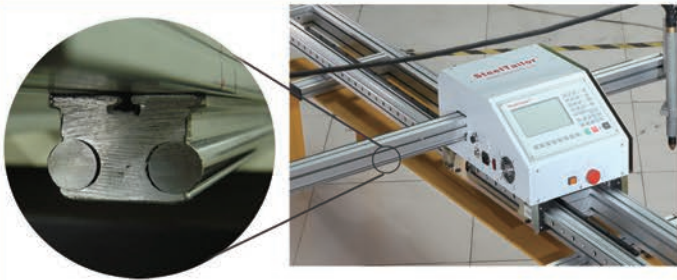
SteelTailor Power Series integrates a completely new version of CNC controller with many new features:

- 64M Memory for Users' Programs
- Built-in Library of Commonly Used Figures
- Break-point & Power-cut Restoration
- Returning to Reference Point
- Kerf compensation
- Revolving
- Mirror image
- LCD 7" display



Advanced Stability

X-axis drive mode is optimized for SteelTailor Power. The introduction of guiding rail in the x-axis of the machine, enables a more stable movement of the crossbeam and avoids the cutting head from declining.

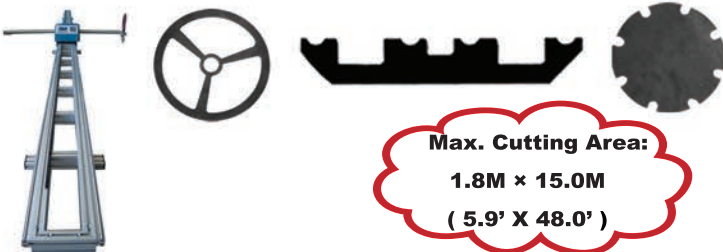


Guiding System of the Cross Beam



Bigger Cutting Area

SteelTailor Power cuts as wide as 1.8m meters (5.9ft), as long as 15 meters (48ft)



Max. Cutting Area:
1.8M × 15.0M
(5.9' X 48.0')



Easier Maintenance

Top Cover



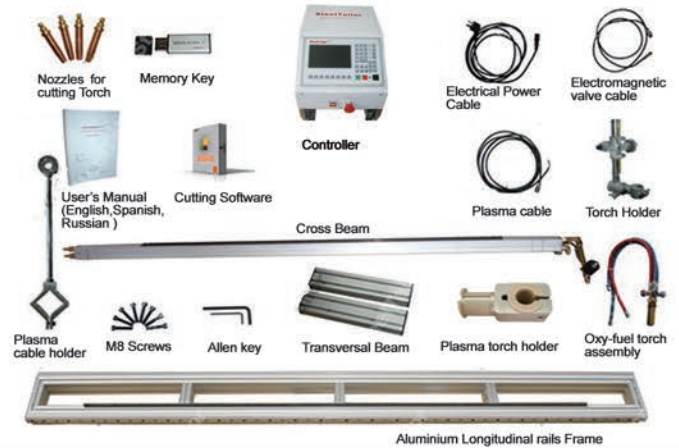
Check-up and maintenance of the controller can be done simply by removing the top cover

Motor Enable/Disable Button



This feature allows the user to enable or disable the motors while power is on, guarantee the user's safety

SteelTailor Power Standard Package



Support Nesting



So Portable



SteelTailor

SteelTailor (China) Ltd.
 Cannes Industrial Park,
 No.18 Shuang Qiao Dong Lu, Chao Yang District
 Beijing, China. 100121
 Tel: +86-10-51662600 Fax: +86-10-85370386
 E-mail: info@steeltailor.com Http://www.SteelTailor.com

SteelTailor Inc. (USA)
 Tel: +1 331 422 0800
 E-mail: usa@steeltailor.com
 Address: 928 Century Farm Ln, Naperville,
 IL 60563, USA

After Sale Service

24 Hour Line: +86 15810673675
 Skype: service-steeltailor
 E-mail: service@steeltailor.com