

Abdomen, Obstetrics, Gynecology,
Kidney, Urology



Convex Probe C5-2D
2.5 / 3.5 / 4 / TH14 / TH14.5 / TH15

Vascular, Small parts,
Musculoskeletal, Carotid, Nerve,
Orthopedic



Linear Probe L11-4Ks
6.5 / 7.5 / 8.5 / TH19 / TH110 / TH111

Pediatric Abdomen and Cardiac

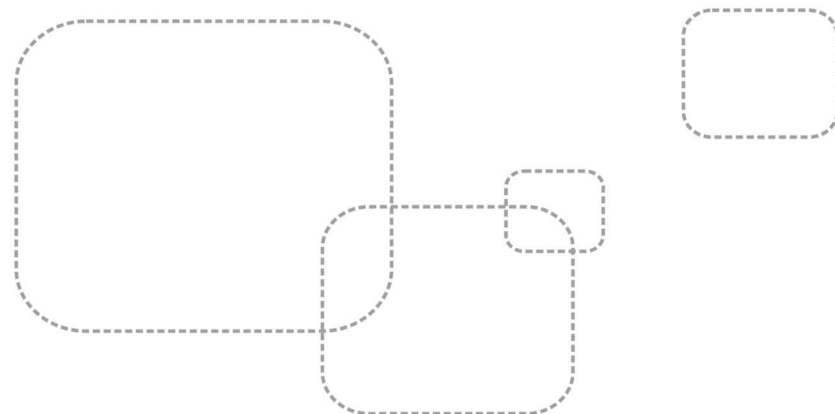


Micro-Convex Probe C8-5Ks
5.5 / 6.5 / 7.5 / TH17.5 / TH18 / TH18.5

Gynecology, Obstetrics, Urology



Trans-Vaginal Probe E10-4Ks
5.5 / 6.5 / 7.5 / TH17.5 / TH18 / TH18.5



Distributor



Specifications subject to changes without prior notice

© 2013 United Imaging Systems (Beijing)Co., Ltd. All rights reserved
UIH-100BW-20160505



iuStar 100^{B/W}

Your Ultimate Choice



The iuStar100BW is a lightweight, hand-carried black and white scanner ideal for entry-level general purpose and O&G practice. The screen on the system is 15inch and can be angled up or down, this is a really useful function when scanning at different heights.

Feature Highlight

Expand Mode: expanding field of view, offering more diagnostic information in one image

Large Image area providing more details in one image to ensure accurate diagnosis.

Clip Board: Easy access to saved images and CINE loops to review, measure, transfer or delete.

UniView™ (Adaptive Speckle Reduction)

UniCT™ (Spatial Compound Imaging)

TSI (Tissue Specific Imaging): General, Fluid, Fat, muscle, adjusting the speed of sound to optimize image quality in various tissues and difficult patients.

Rolling M technology

Colorized Map



- 15" High Resolution LED Monitor
- Tissue Harmonic Imaging(3-step)
- Thumbnail Image Display
- iuScan™ Quick Image Optimization
- In-system Probe Storage Designed for Out Patient
- User Defined Exam Presetting & OB Formula
- UltraPortable (4.5KG Only)
- 3 Active Probe Connectors
- Built-in Lithium Battery

Technology Exceeds Value Limits

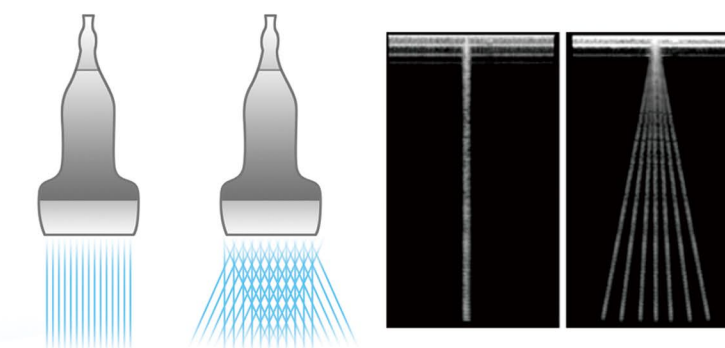
UniView™ (Adaptive Speckle Reduction)

eliminates noise while maintaining true tissue architecture



UniCT™ (Spatial Compound Imaging)

enhances tissue interfaces and border differentiation, available on all probes with uncompromising frame rate.



Excellent In Details

