

TS-AC Electronic Room Thermostat

The Electronic Room Thermostat is featured with unique design and easy operation, more luxury design with LED touch key. Illuminated LCD display indoor temperature, the fixed temperature, the wind speed and the time. The Electronic Room Thermostat is used to master on/off the fan coil speed and electronic cool-hot valve, makes all the controlled room are in the fixed temperature.

TS-AC Temperature fits for hotels, motels, office buildings, house and the places which installed 2 piles or 4 piles central air-conditioner.



TS-AC20SP-4P



Product Feature

- Super-luxuriously designed and made of PC fire resistant, isolation and metal material.
- Illuminated LCD display room temperature, fixed temperature, wind speed and time, IR remote can be selected.
- Intelligent circuit control has 3 steps of wind speed, cooling mode, heating mode and automatic mode.
- LED backlight designed, meets modern trend and easy indicator at night.
- Save more than 30% energy effectively.

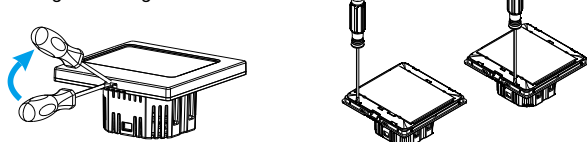
Item No

- TS-AC20SP-4P

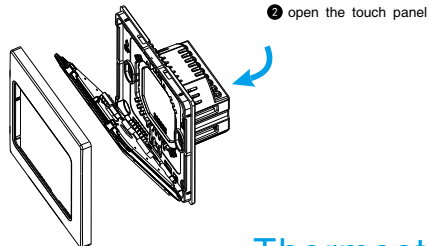
SPECIFICATIONS

Installation and wiring

- 1 Open the cover plate of touch panel from switchgear driving box with screwdriver

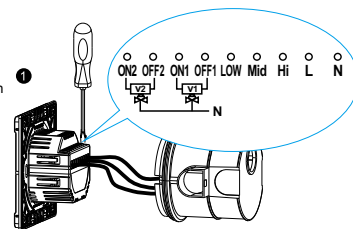


open the cover frame

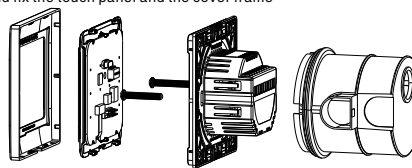


- 2 open the touch panel

- 2 Draw out strong electrical cable from wall box and trim them up, press tightly on terminal block as illustration

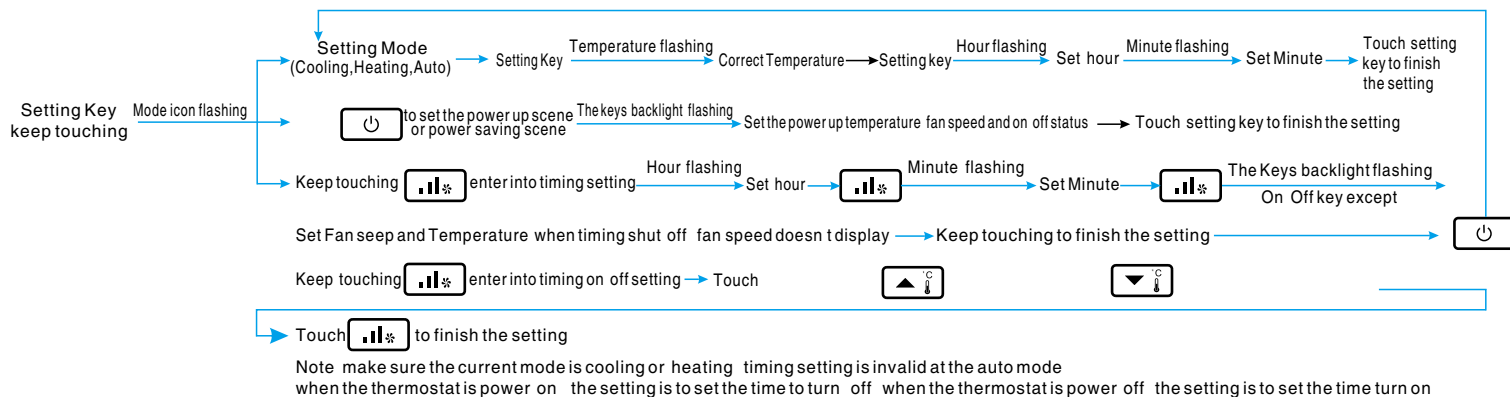


- 3 Mount the switch driving section into wall box with 2 screws and fix the touch panel and the cover frame



- 2 Connect the AB detect cables to activate the power saving mode and achieve preset value when the keycard is removed.

Thermostat Setting Procedure



Note: make sure the current mode is cooling or heating. timing setting is invalid at the auto mode when the thermostat is power on. the setting is to set the time to turn off when the thermostat is power off. the setting is to set the time turn on

Specification

- Temperature Control range: 16 °C -32 °C continuously adjustable.
- Temperature control precision: ± 1 °C
- Dissipation power: <2W
- Current Loading: AC60/50HZ、110/240V
- Service life: Membrane key 1 million times touching, touch point 100 thousand times.
- Dimension: W86mm × H86mm × D42mm
- Environment: Operate temperature range: 0 °C—50 °C
Transport and store temperature range: -10 °C to 60 °C

Energy Saving Mode

When the card is removed, the system will be automatically reset to the default energy saving mode.

Power Up Scene Setting

When the guest inserts the card for power, the thermostat works automatically at the preset status of certain temperature and fan speed.

Key lock Setting

Key touching the lock key for 5 second to lock the key on the touch panel and keep touching the lock key again, it works again.

Timing Setting

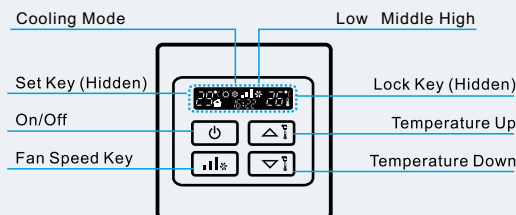
Function: when the thermostat work at the preset time, the speed and temperature will be changed automatically to the preset status.

Standard and Certificate

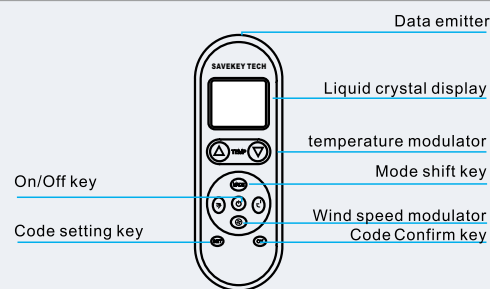
The product is designed and produced in accordance with CE.

Touch Panel

Illustration



TS-AC-IR Illustration



Trouble Shooting Guide

Symptom	Possible cause	Solutions
No backlight of touch screen	1 Incorrect wiring or poor contact.	Make sure that input and output line is tightly connected on the terminal with correct connection
	2 Main switch or creepage protection switch is off.	Turn on the main switch or creepage protection switch, please check the equipment if the trip still occurs and ensure that there is no creepage
	3 No neutral line connected of the system	Connect neutral line to the terminals Correctly
Auto-shut of the controlled equipments	1 Unstable Voltage, too much interference	Turn off the power and restart
	2 Incorrect wiring	Fasten the wire, and ensure the correct connection
No shut-off of air conditioner	1 Overload current	Reduce the load and turn on power again. If it doesn't work, please change the driving part
Ceaseless Flash for touch screen	1 Broken or invalid for touch screen	Replace the touch screen
	2 Entering setting mode of touch screen	Exit the setting mode by remote controller
Remote Controller doesn't work	1 Code for the remote controller is not correct.	Set the correct code.

Warning: when the product works as the master switch of the room, and the loaded currency is too large (such as air conditioning system), then it must be connected with a reliable contactor