

TS-SW Lighting Touch Panel

TS-SW series lighting touch panel is the newest design for easy operation. Modern design back light indication for keys, make it visible in dark. With EEPROM, even power cut occasionally, the basic data of the switch will still be kept.

TS-SW series lighting touch panel is widely applied to hotels, motels, and apartments.



TS-SW20L4-M



Product Feature:

- Turn On/Off appliance connected.
- Working with TS-SW-IR infrared remote controller.
- LED back light design to make keys visible at night.
- 45 seconds turn off delay function preferable, giving guest enough time to go for bed or leave the room.

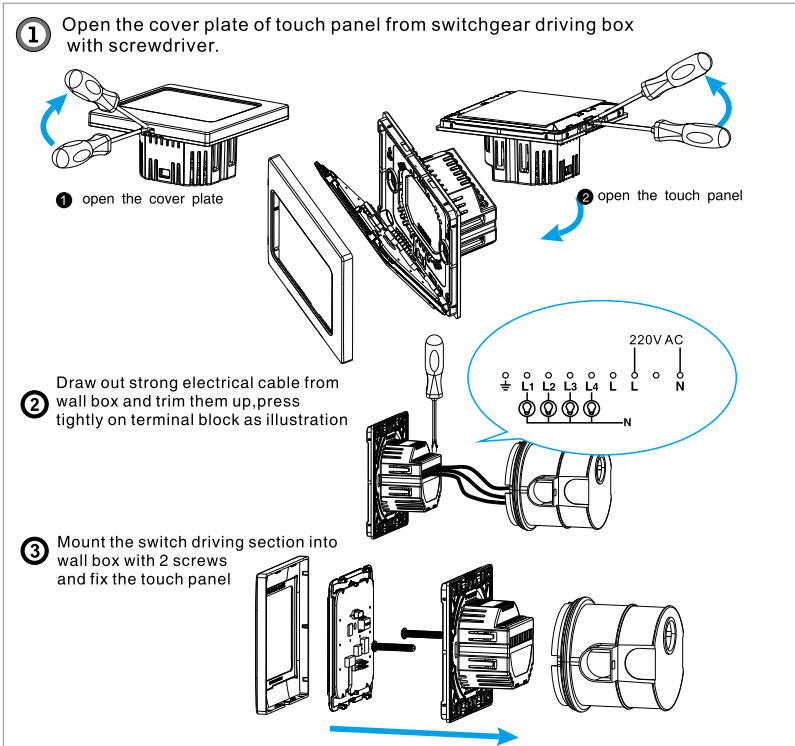
ITEM NO.

- TS-SW205L1/L2/L3/L4/L3-M/L4-M

Color for reference: White (the default color), Red, Pink, Gold, Blue, Grey, Silver, and Black.

Metal frame for reference: Satin Chrome, Pearl Chrome, Mirror Gold, Mirror Chrome, and Satin Gold.

SPECIFICATIONS



Product Operation

- Master function: Press "Master" key to implement master on and master off function.
- On/off Function: Directly touch the touch panel to achieve on/off function for the equipment. The corresponding LED backlight on the touch panel will clearly indicate the on/off status of the equipment.
- Time-lapse master off function: Press and hold Master key for 3 seconds, all equipments controlled by this panel will turn off after 45 seconds automatically, so that the user has enough time to a leave or rest. It is applicable to washing room, bedroom or passage.
- Touch the keys to turn on/off lights you prefer
- Touch the master on/off key to achieve on/off function for the equipment.
- press "master on" key on the remote to open all the devices
press "master off" key on the remote to close all the devices
- work with infrared remote controller
- press the device remote key can control the inputted light device "+" is to open the light, "-" is to close the light.

Specification

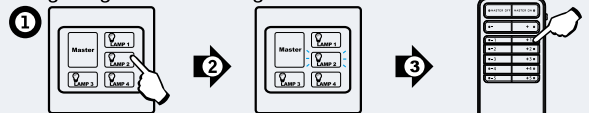
- Voltage: 50/60Hz 110~240VAC
- Operate temperature: -10℃~60℃
- Operate humidity: 50%RH 10~95%
- Service life: Touch panel button is 1 million times, touch point for relay is 100 thousand times
- Dissipation power: <2W
- Dimension: W86mm×H86mm×D43mm
- Transport and store temperature range: -20℃~80℃

Standard and Certificate

The product is designed and produced in accordance with CE .

REMOTE SETTING PROCEDURE FOR DEVICE

lighting control setting

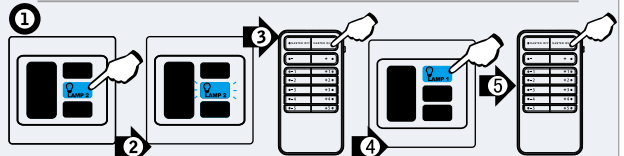


Select light touch panel required on/off control, keep pressing on key for 5 seconds.

The on/off key flickers after "Dep" sound. All remote keys will be cleared on this panel if you keep pressing on Master off on remote for 5 seconds at this time. Touch other keys of touch panel mean exit setting status.

Choose one group of remote keys on the remote. "+" key is to input, "-" key is to delete. This group of control keys will control turn on/off for this device after input. "+" key is to turn on; "-" key is to turn off. This group of device remote key will not control any devices after being deleted.

TS-SW20 SETTING FOR POWER-UP SCENE



Press the key as illustration for 5 seconds.

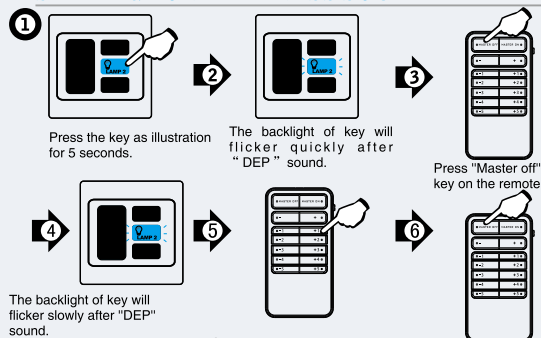
The backlight of key will flicker after "DEP" sound.

Press "Master On" key on the remote.

Set on/off status or brightness for each equipment on the touch panel.

Press "Master on" key again to finish setting.

SETTING FOR KEY-PRESS SOUND



Press the key as illustration for 5 seconds.

The backlight of key will flicker quickly after "DEP" sound.

Press "Master off" key on the remote

The backlight of key will flicker slowly after "DEP" sound.

"DEVICE 1" is to set key-press sound. "+"key is to add key-press sound. "-"key is to cancel key-press sound. "DEVICE 2" is to set the bright backlight of touch panel. "+" key is to bright up gradually. "-" is to dim down gradually. "DEVICE 3" is to set the dim backlight of touch panel. "+"key is to bright up gradually. "-" is to dim down gradually. "DEVICE 4" is to set the dim backlight on the panel always bright or not. "+" is always light, "-" is not always light.

Press "master off" finish the setting.

Touch Panel illustration

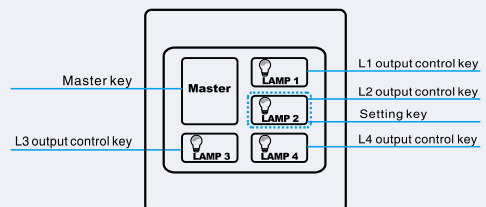
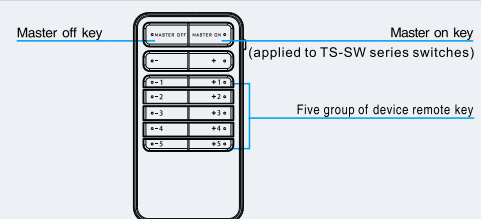


Illustration of SK-FACILITY-Remote



Trouble Shooting Guide

Symptom	Possible Cause	Solution
Backlight of touch panel does not illuminate	1. Wires are incorrect connected or not properly secured.	Make sure that the input and output wire is well connected with the terminals, and the wiring is correct.
	2. Master switch or leakage protection switch is disconnected.	Connect the master switch and leakage protection switch. If tripping still occurs, please check whether there is electrical leakage on the equipment or whether the neutral line of output phase is correct.
	3. Neutral line is not connected to the equipment.	Connect the neutral line with correct terminal.
The controlled equipment or lamps turn off automatically.	1. The voltage is not stable, and the power interference is strong.	Stop to use the equipment of big interference and ask local technicians to check.
	2. Wiring is incorrect	Secure the connection and ensure correct wiring.
Lamps can not be turned off.	1. Load current exceeds the rated operating current of the product.	Reduce the load power, and then turn on the power. If the lamps still can not work normally, please change the driving part of the product.
Touch panel flashes continuously.	1. Touch panel is damaged.	Replace the touch panel.
	2. Touch panel is in the setting mode.	Exit the setting mode with Remote.
Touch panel cannot control the correspondin lamps.	Incorrect wiring or connected with wrong terminal.	Check whether the lamp wire is connected to the output terminal correctly and correspond to the certain touch panel position.

Warning: when the product works as the master switch of the room, and the loaded currency is too large (such as air conditioning system), then it must be connected with a reliable contactor.