

TS-SW Dimmer Touch Panel

Dimmer touch panel is our newest design, with the feature of easy operation, Luxury design with backlight glass touch panel key, easy to be identified in dark, following up the fashion trend. When the power fails, EEPROM can save the inputted data permanently.

Touch the panel directly, brightness changes immediately, simply operation with LED backlight instruction.

TS-SW Dimmer touch panel fit for different hotels, office buildings and home installation.



TS-SW20D2



Product Feature:

- The dimmer switch controls the brightness of incandescent lamp, easy to make the brightness adjustment.
- With TS-SW-IR remote to control in a 10m distance.
- LED backlight key design, easy to be identified in dark, following up the fashion trend, Up to 20~30% energy saving.
- Up to 20~30% energy saving.

ITEM NO.

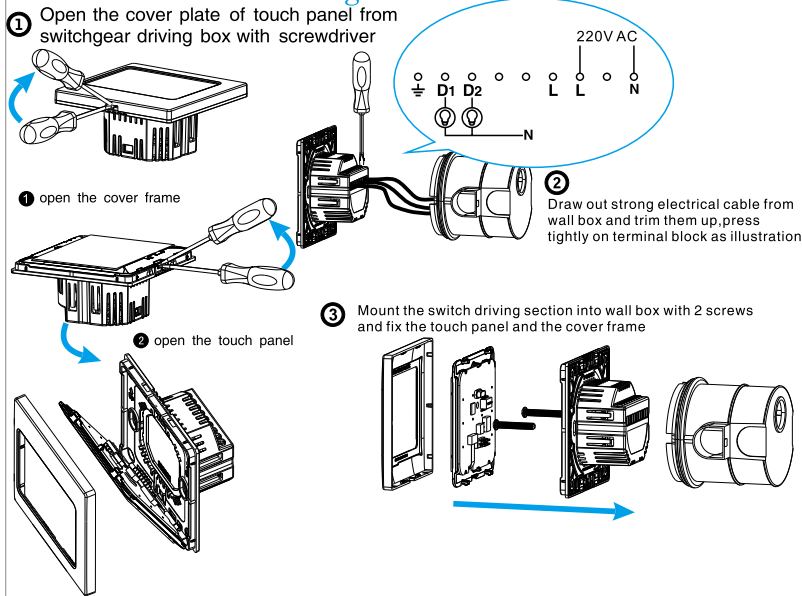
- TS-SW20D1
1 gang dimmer panel
- TS-SW20D2
2 gang dimmer panel

Color for reference: White (the default color), Red, Pink, Gold, Blue, Grey, Silver, and Black.

Metal frame for reference: Satin Chrome, Pearl Chrome, Mirror Gold, Mirror Chrome, and Satin Gold.

SPECIFICATIONS

Installation and wiring

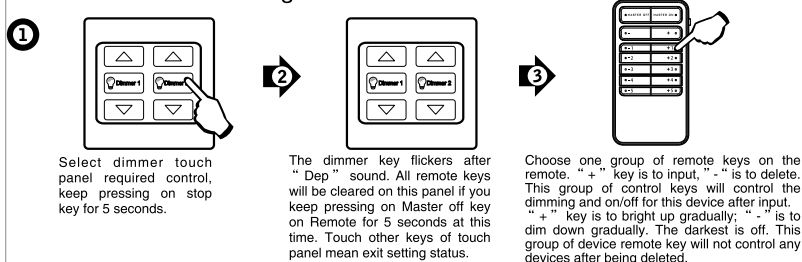


Specification

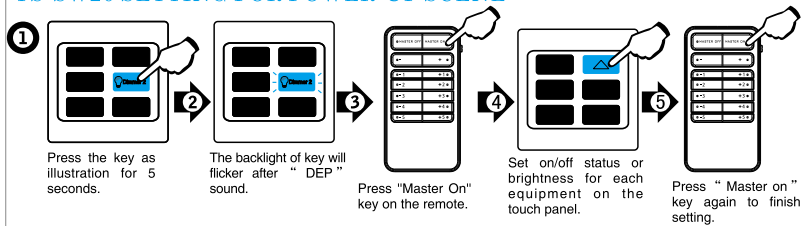
MCU processor: Atmega mcu
 Dissipation power: $\leq 2W$
 Operate temperature: $-10^{\circ}C-60^{\circ}C$
 Operate humidity: At $50^{\circ}C$ 10-95%RH
 Environment: Transport and store temperature range: $-20^{\circ}C$ to $80^{\circ}C$
 Dimension: W86mm×H86mm×D43mm
 Service life: Touch panel button is 1 million times,

Remote setting procedure for device

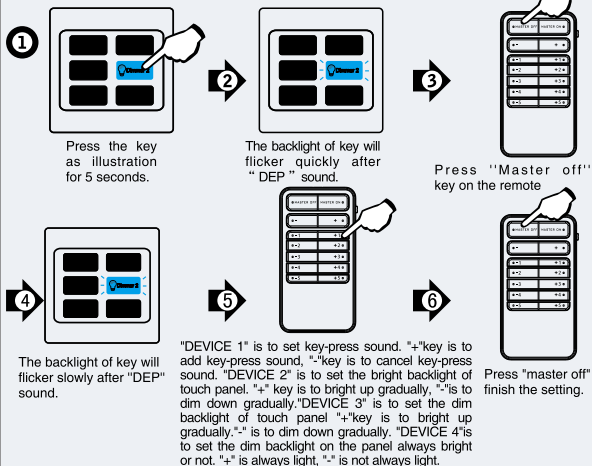
Dimmer control setting



TS-SW20 SETTING FOR POWER-UP SCENE



SETTING FOR KEY-PRESS SOUND



Product Operation

- Select one group of dimmer device, press any corresponding key on the touch panel can open the device, press master switch the device close immediately.
- Touch the bright-up key and dim-down key adjust the brightness.
- Press master-on key on the remote will open all the dimmer equipmen, press master off key will close all the dimmer equipment.
- Select one group of dimmer device, press the master on key for 5 second, choose one group of remote keys on the remote, "+" is to input, "-" is to delete. Press the device remote key can control the inputted dimmer device, "+" is to bright up, "-" is to dim down.

Wiring

Illustration and wiring

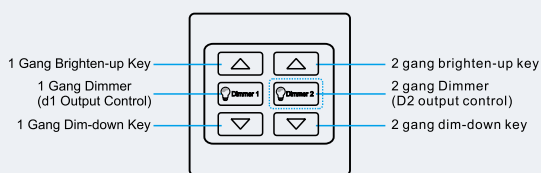
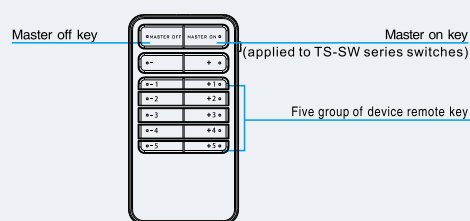


Illustration of TS-SW-IR-Remote



Standard and Certificate

The product is designed and produced in accordance with CE .

Trouble Shooting Guide

Symptom	Possible Cause	Solution
Backlight of touch panel does not illuminate	1. Wires are incorrect connected or not properly secured.	Make sure that the input and output wire is well connected with the terminals, and the wiring is correct.
	2. Master switch or leakage protection switch is disconnected.	Connect the master switch and leakage protection switch. If tripping still occurs, please check whether there is electrical leakage on the equipment or whether the neutral line of output phase is correct.
	3. Neutral line is not connected to the equipment.	Connect the neutral line with correct terminal.
The controlled equipment or lamps turn off automatically.	1. The voltage is not stable, and the power interference is strong. 2. Wiring is incorrect	Stop to use the equipment of big interference and ask local technicians to check. Secure the connection and ensure correct wiring.
Lamps can not be turned off.	1. Load current exceeds the rated operating current of the product.	Reduce the load power, and then turn on the power. If the lamps still can not work normally, please change the driving part of the product.
Touch panel flashes continuously.	1. Touch panel is damaged.	Replace the touch panel.
	2. Touch panel is in the setting mode.	Exit the setting mode with Remote.
Touch panel cannot control the correspondin lamps.	Incorrect wiring or connected with wrong terminal.	Check whether the lamp wire is connected to the output terminal correctly and correspond to the certain touch panel position.

Warning: warning :when the product works as the master switch of the room, and the loaded currenxy is too large (such as air conditioning system),then it must be connected with a reliable contactor