




COYOTE SPAS[®]

ENGINEERED FOR A CHANGING ENVIRONMENT

COYOTE CONFIDENCE





Across North America the Coyote has thrived, from the frigid north to the scorching deserts. She is renowned for her unstoppable ability to adapt to change. Even as we take over her habitats with our sprawling cities, the Coyote relentlessly adapts to survive and grow in number.

Like their namesake, Coyote Spas® are designed for a changing environment:

- Feature-rich lower cost units for tighter household budgets
- Larger seating areas for growing families
- Time-saving water treatment technology for hectic schedules
- Customizable exterior designs to suit any landscape or personal style.

Already well known for quality, durability and value, we at Coyote Spas® have turned our energy to setting a new bar for our industry for design, comfort and therapy.

Through the use of advanced manufacturing robotics we were able to design the look, and feel of our new Terrace series spas. Not only is this series one of the most technologically advanced spas available, but its new look will enhance your backyard. Imagine the most advanced therapy appliance available that doesn't look out of place in your space.

PROGRESSIVE DESIGN



Coyote Spas® are designed using the latest therapeutic principles. Each spa is engineered to fit the contours of your body, to provide proper lumbar support and to maximize your comfort. Ergonomic seating cradles your body, while the jets melt away stress and muscle strain.



No other substance on Earth can rival the innate natural healing properties of water. Ancient cultures recognized water as a natural medicine and pioneered the use of hydrotherapy for treatment of all manner of illnesses, pain and disease. A warm soak and having your muscles and joints massaged with water jets, creates measurable positive physiological changes in our bodies.

Traditional Spa designs afford much of these benefits, but our research shows that there is so much more that can be done to enhance the benefits of hydrotherapy.



Coyote Spas® engineers utilize larger high volume jets that pulsate to provide much better massage than the simple jets of years past. Targeted zones of massage concentrate the best jet action for that part of the body to deliver the ideal restorative results.



HOT TUB HEALTH BENEFITS



FEEL GROUNDED?

“Earthing” (a.k.a. “grounding”) is an amazingly simple, yet powerful, therapy by which we reconnect to the earth’s gentle, negatively-charged surface to restore and maintain the body’s most natural electrical balance. We can ground ourselves by simply walking barefoot, or sitting / laying down on the earth, as well as through connective devices, like hot tubs, that deliver the natural healing energy of the earth into our bodies. “Earthing” may very well be the solution for the cause of most common modern diseases: chronic inflammation.

NEED A BETTER NIGHT’S SLEEP?

During the normal human daily cycle, sleep occurs when the core temperature is dropping. Sleep usually begins when the rate of temperature change and body heat loss is maximal. The average adult’s lowest temperature is at about 5 AM, or two hours before waking time. Soaking in hot water rapidly increases body temperature speeding this process up so you sleep deeper longer.



INCREASED HEALING

Soaking in hot water improves healing several ways:

- 1 Healing happens faster as oxygen-rich blood flow to the injured location increases.
- 2 Immersion in water reduces swelling because of the increased pressure it exerts on the body.
- 3 Immersion in water also reduces the amount of weight we bear on our joints due to gravity.
- 4 During hot water immersion, disease causing toxins are purged from the body through the skin during perspiration.

INCREASING MEDICAL ISSUES FACED BY PEOPLE TODAY

- Back, neck & shoulder pain
- Diabetes
- Depression
- Obesity

SUFFERING FROM ARTHRITIS OR CHRONIC PAINS?

The water reduces the body weight by approximately 90% taking the strain off the joints and muscles.

The heat from the water warms up joints to keep them moving, reduces swelling by making the collagen tissue more flexible: reducing aches and pains.

Exercising in water provides the right amount of resistance to strengthen weak muscles and joints without causing excess pain.

STRESSED?

Relaxing and soaking in hot tubs is proven to reduce stress.

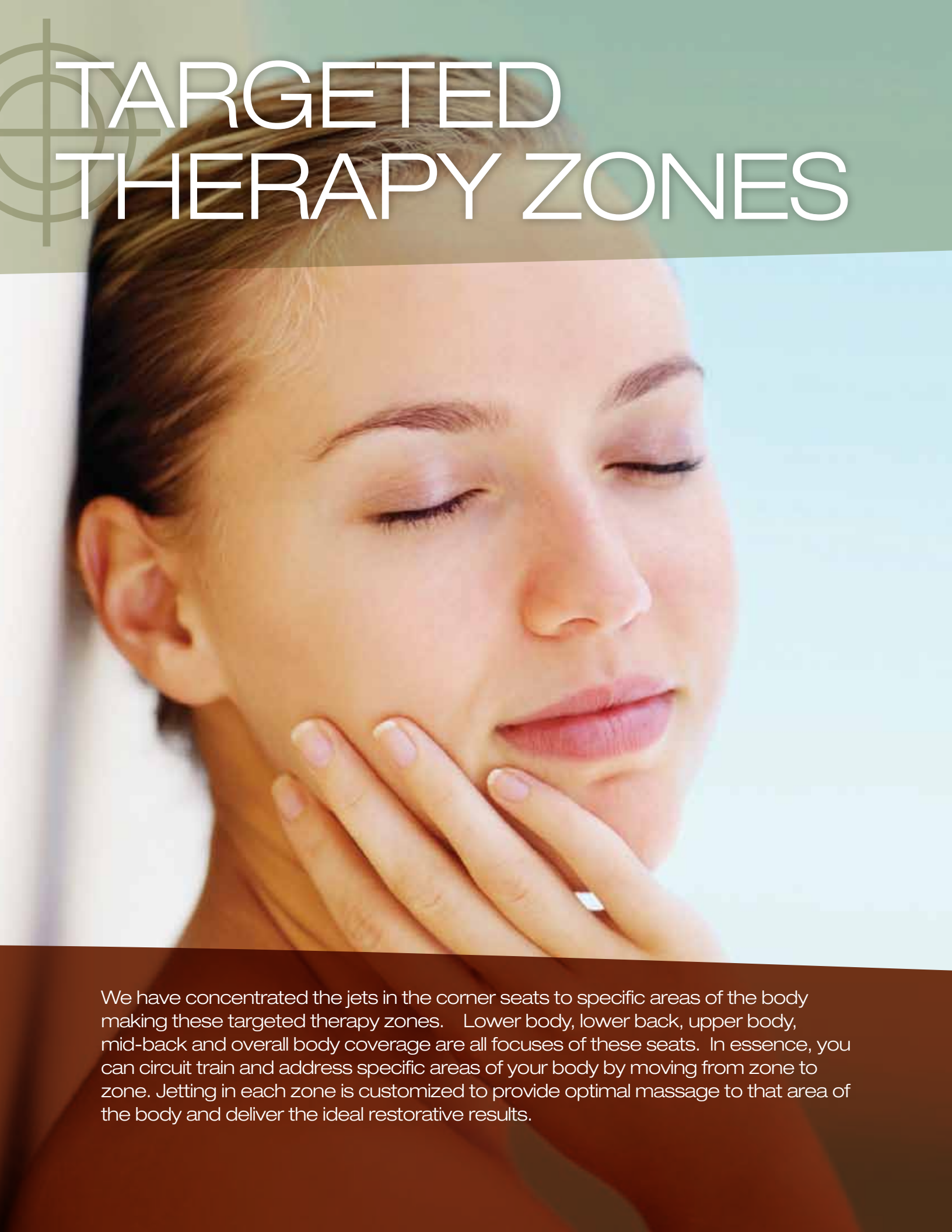
The luxurious warmth and powerful water jets relax muscle tension, reduce high blood pressure and associated headaches.



PURE STYLE

WANT A FRESH AND
INNOVATIVE WAY TO
SOCIALIZE WITH
FRIENDS AND FAMILY?

What a fast paced world we live in these days! It seems sometimes that we are rushing from one place to another. A hot tub is the perfect way to slow down and enjoy the day. Enjoyed by young and old alike, it is an inspired way to connect with those we love while doing good for our bodies as well.



TARGETED THERAPY ZONES

We have concentrated the jets in the corner seats to specific areas of the body making these targeted therapy zones. Lower body, lower back, upper body, mid-back and overall body coverage are all focuses of these seats. In essence, you can circuit train and address specific areas of your body by moving from zone to zone. Jetting in each zone is customized to provide optimal massage to that area of the body and deliver the ideal restorative results.



LOWER BODY:
FOOT, CALF, THIGH AND BUTTOCKS FOCUS



LOWER BACK:
LUMBAR, SCIATIC FOCUS



UPPER BODY:
NECK, SHOULDER FOCUS



MID-BACK :
TORSO, UPPER LUMBAR AND SHOULDER FOCUS

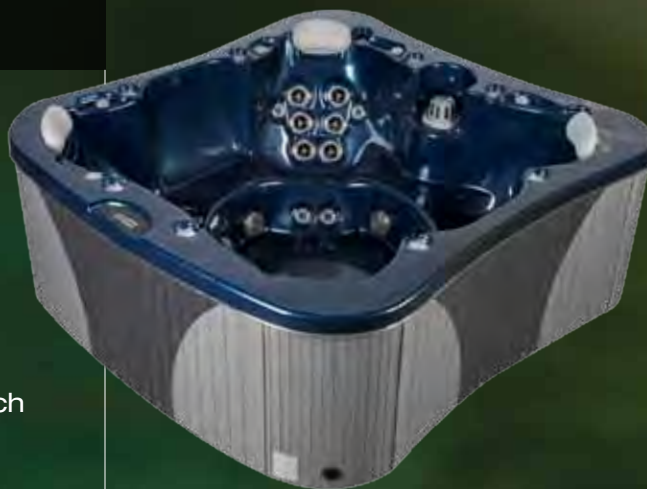


OVERALL BODY:
QUICK FULL BODY MASSAGE FOCUS

COYOTE SPAS® ARE DESIGNED FOR LOW MAINTENANCE

MAINTENANCE FREE CABINETS

Coyote Spas® cabinets are designed to have the appearance of natural wood with the durability and low maintenance of synthetic composite materials. No need to sand or stain the cabinet regularly, Coyote cabinets can be easily cleaned with the garden hose. Note too, that the cabinets walls are easily removed to allow easy serviceability to internal components. Offered in several wood tones to best match your landscape.



NORTHERN INSULATION

Coyote Spas® utilize a perimeter Heatlock® insulating system first developed for spas installed in the coldest regions in the world. Fundamental to this design is an outer layer of high tech insulating material, a trapped dead air space where the equipment is housed, and a shell material that allows the transfer of incidental heat through the spa shell.

This design guarantees extremely low operating costs and protects against freezing in the event of power failure. For the extra cold climates, consider our upgraded Northern Insulation package

COYOTE SPAS® SHELL TECHNOLOGY

The basis of any quality spa is the strength of the shell. At Coyote Spas®, we start with a wide selection of high gloss smooth and textured ABS backed cast acrylics. Then a proprietary heat transferring, no VOC's, composite material called Elastocast™ is sprayed on the shell to give steadfast structural integrity. This environmentally responsible way of building a spa shell allows us to take advantage of our Northern Insulation Heatlock® system.



ADVANCED MICRO FILTRATION

Coyote Spas® utilize recyclable Silver Sentinel micro filters. This layered media thoroughly filters suspended particles down to 1 micron on a single pass leaving you with crystal clear water without the fuss of traditional filter systems. Further, the inner layer of this filter is imbedded with nano-silver ions that makes the media antiseptic, bactericidal, deodorizing, anti-mold and anti-algae to provide additional hygiene to traditional filters and even other micro filters on the market.

EVERLAST™ FLOOR*

Coyote Spas® are available with our Everlast™ floor. This vacuum formed durable recycled ABS bottom is fully insulated and completely seals the underside of the spa, keeping it impervious to moisture, pests and time.

* Not available on Vegas or Havasu



STATE-OF-THE-ART CONTROLS

New for 2011, we offer our Eco-Pak spa packs. This cutting-edge platform is ready for the future with a faster processor and huge upgradability. A fully sealed enclosure with on-board diagnostics and removable relays allows you to just change a failed relay rather than the entire pack, saving you money down the road and making it the easiest pack in the world to service.

COYOTE SPAS® ARE DESIGNED FOR LONG-TERM

JETS REDESIGNED

Vital to providing the best spa hydrotherapy available are jets that continue to perform over the long-term. Every Coyote Spa uses Axis™ and Quantum™ jet technologies and are the only jets available that effectively deal with problematic water chemistry. Further these jets operate with minimal friction, making the pulsating effect more powerful with less energy!

ADVANCED OZONE PURIFICATION

Ozone is perhaps nature's most powerful water purifier. Despite ozone's great potency, nearly all systems on spas fail to address the three critical components for successful water purification: Concentration of ozone, Surface Area, and Contact time. Coyote Spas® Promixx™ Professional Series ozone system design maximizes ozone reaction with contaminants and involves no moving parts for years of trouble-free operation.

LIGHTING



Coyote Spas® uses Precision Beam Diffusion™ LED technology to deliver perfectly mixed true color. Further, by using Wide Radius Projection™ technology our LED lights deliver more pure mood enhancing light than any other lights available. Enjoy your favorite color or at the touch of a button, change the lighting to whatever you desire.

ACRYLIC COLORS

All models can be ordered in one of seven different acrylic shell colors to suit your personal style.



Sterling Silver



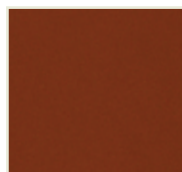
Starry Night Blue



Mocha



Moonscape



Copper



Oyster



Ultramarine

MULTIFUNCTION STEREO

To enhance the hot tubing experience all Coyote Spas® are available with optional stereo systems. Choose from a cabinet mounted marine deck amplifier with hooks-up for an SD card, Flash drive or any audio device including an iPod, MP3, CD player or even a TV! Matched to this are two JBL pop up swivel speakers and a powered sub-woofer for premium quality sound. (Not available on Vegas and Mesa models)



COVERS

Coyote Spas® offers a wide range of hot tub covers and specifications. At the very top of our line is the VACSEAL™ cover, which is available on some models. This cover will outlast and retain more heat than any other cover. The VACSEAL™ cover was designed for extreme cold climates where temperatures reach 30 below zero for weeks on end and winter winds can blow standard covers across town.

**Terrace series comes standard with a two-tone cover.*

CABINET COLORS

CLASSIC SERIES



Grizzle



Maroon

TERRACE SERIES



Stone



Desert

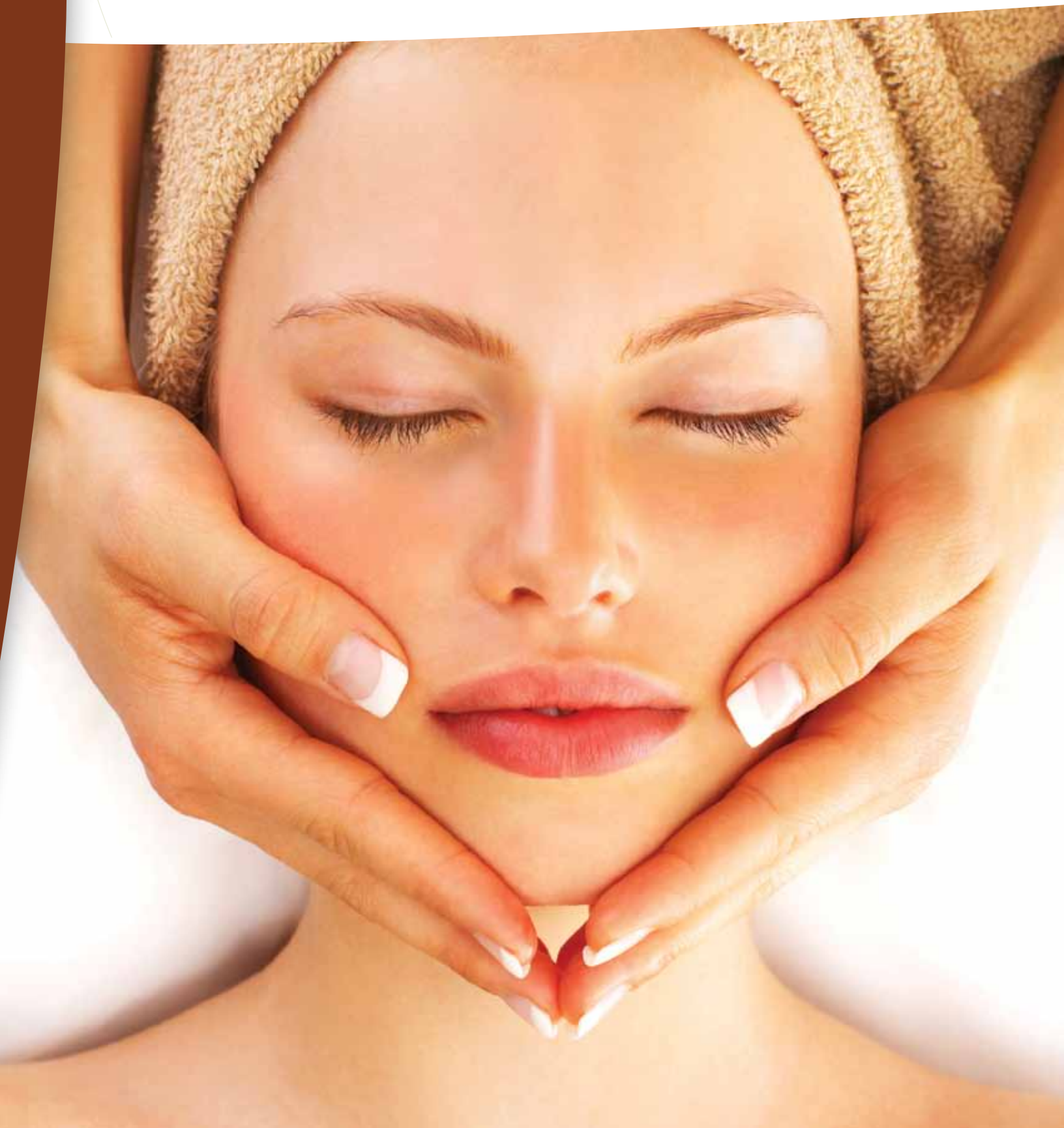


Ash



Navajo

TERRACE SERIES





Bold, sweeping lines and thoughtful two tone accents define the new look of the Terrace Series and accentuate the new thinking that is behind this innovative spa line.

Completely reinvented to focus on much of what has been learned about hot tubs and their benefits on the human body over the course of years of research and development.

The Terrace Series is based on the premise that the spa must be designed for who uses it most of the time and that therapy is the fundamental goal of the users. In order to maximize the healing properties of a spa, one must design the units to accommodate the various body types comfortably and then target those areas of the body correctly.

Traditionally, spas have tried to offer in each seat of the tub an array of jets so that all users could get some jetting. But the reality is that most spas are used regularly by two people and if we keep this in mind we can design seating and jetting for the main users and worry less about the few times a year that groups use the spa.

Seating is more open and barrier-free in style not for seating capacity, but rather to facilitate easy movement from seat to seat with minimal impediment. You will note that many of the middle seats on this line of tubs do not have jets at all and we have concentrated the jets in the corner seats, making these the targeted therapy zones. Going even further, each of these zones has a distinct focus for the jetting. Lower body, lower back, upper body, mid-back and overall body coverage are all focuses of these seats. In essence, you can circuit train and address specific areas of your body by moving from zone to zone.



TUCSON

The Tucson features a multi-level, barrier free, single lounge layout. Smooth lines and a curved interior profile, give the Tucson a high-end luxury feel. Enjoy one of the three different depth corner buckets or cool down on one of the shallower bench seats. Stretch out and relax in the lounge and let your cares soak away. Whether it's family or friends, all are guaranteed to love this spa.

| | |
|----------------|---|
| Dimensions | 89"x93"x 35.5" (226cm x 236cm x 89cm) |
| Water Capacity | 400 gallons (1514L) |
| Jets /Pumps | 26- 3" & 23- 5" jets 51 total jets, 3 pumps |
| Seating | Up to 6 people |

Features

Beautiful curvilinear design
Contoured design for comfort
Effective hydro-massage for forearms, neck, back, legs and feet
Removable padded headrests
Multi-colored LED lights and drink holders

Ecopro™ Professional Series ozone system
Vibrosound, or Multiplayer Stereo
2 Waterfall Neck Jets
All jets rotate using our patented Axis and Quantum technologies.

SANTA FE

The Santa Fe features His and Hers Captain's chairs for those looking for an amazingly comfortable place to relax. Add the full body massage and the rest of the world will be envious. Multi-level bench and double swivel seats finish off this impressive design. Add our Theatre System and you'll have the best seats in the house.



| | |
|----------------|--|
| Dimensions | 89"x93" x 35.5" (226cm x 236cm x 89cm) |
| Water Capacity | 380 gallons (1438L) |
| Jets /Pumps | 28-3" & 21-5" jets 51 total jets, 3 pumps |
| Seating | Up to 7 people |

Features

Beautiful curvilinear design
Contoured design for comfort
Effective hydro-massage for forearms, neck, back, legs and feet
Removable padded headrests
Multi-colored LED lights and drink holders

Ecopro™ Professional Series ozone system
Vibrosound, or Multiplayer Stereo
2 Waterfall Neck Jets
All jets rotate using our patented Axis and Quantum technologies.



MESA

The new Mesa sets new standards for affordable luxury. Cool curves and smooth lines make the Mesa an appealing addition to any environment. Face to face offset seating is guaranteed to please in this great 2 person spa. Just fill and enjoy. You'll be wondering how you made it this far without one.

| | |
|----------------|---|
| Dimensions | 86" x 46" x 29.5" (218.5cm x 117cm x 75cm) |
| Water Capacity | 175 gallons (662 liters) |
| Jets /Pumps | 12- 3" jets, 1 pump |
| Seating | Up to 2 people |

Features

Beautiful curvilinear design
Contoured design for comfort
Effective hydro-massage for forearms, neck, back, legs and feet
Multi-colored LED lights and drink holders

Ecopro™ Professional Series ozone system
Vibrosound, or Multiplayer Stereo
All jets rotate using our patented Axis and Quantum technologies.

DURANGO

The Durango mixes open seating and style in a striking combination. Comfortable seating for seven people, the Durango makes the perfect addition to your backyard. Get deep in one of the four corner buckets or cool down in one of the shallower benches. There are plenty of different levels for different body heights. Whether it's entertaining or relaxing, let the power of 3 x 4HP pumps massage your cares away.



| | |
|----------------|---|
| Dimensions | 89" x 93" x 35.5" (226cm x 236cm x 89cm) |
| Water Capacity | 400 gallons (1514L) |
| Jets /Pumps | 26- 3" & 23- 5" jets 51 total jets, 3 Pumps |
| Seating | Up to 7 people |

Features

Beautiful curvilinear design
Contoured design for comfort
Effective hydro massage for forearms, neck, back, legs and feet
Removable padded headrests
Multi-colored LED lights and drink holders

Ecopro™ Professional Series ozone system
Vibrosound, or Multiplayer Stereo
2 Waterfall Neck Jets

All jets rotate using our patented Axis and Quantum technologies.

CLASSIC SERIES

Traditional seating configurations generously adorned throughout with jets and included features make these spas the epitome of outstanding value.





MARICOPA

A spacious 6 person spa, the Maricopa offers a varied seating format to accommodate every body height. Wash away stress in the full-body hydro-massage lounger, or ease the aches and pains of a long day in the captain's chair, complete with jets targeting neck, arms, wrists, and even the hands. The smooth curves of this stylish design make a great addition to any backyard.



LAREDO

With its open seating design, the Laredo easily accommodates a party of 6 to 7. Boasting dual captain's chairs both equipped with adjustable neck jets, along with three variable height bench seats all offering different therapeutic jetting configurations, this sleek model creates a custom massage for each person.

| | |
|----------------|---|
| Dimensions | 81" x 81" x 39.25" (206cm x 206cm x 99.75cm) |
| Water Capacity | 420 gallons (1590L) |
| Jets Pumps | 75 stainless steel jets (2) 4 HP pumps |
| Seating | Up to 7 people |
| Features | Ozone Purification System Volcano Therapy Jet System LED Lighting System with Illuminated Waterfall 5 Neck Jet Therapy Seat Eco-Pak Digital Controls |

| | |
|----------------|---|
| Dimensions | 81" x 81" x 39.25" (206cm x 206cm x 99.75cm) |
| Water Capacity | 400 gallons (1515L) |
| Jets Pumps | 75 stainless steel jets (2) 4 HP pumps |
| Seating | Up to 6 people |
| Features | Ozone Purification System Volcano Therapy Jet System LED Lighting System with Illuminated Waterfall 5 Neck Jet Therapy Seat Eco-Pak Digital Controls |



HAVASU



VEGAS

The Havasu and Vegas create an intimate atmosphere, exclusively seating 2-3 people; this is the perfect model for a condo or small patio.

The sleek triangular profile of the Havasu emphasizes ultimate comfort in a compact size. Recline in one of the two lounge chairs or traditional seat and enjoy the strategically placed high powered jets designed for soothing relaxation.

AMARILLO

Comfortably seating up to 6 people, the Amarillo offers powerful therapeutic seats, along with subtler yet invigorating options. The lounge provides a full-body hydro-massage with jets targeting legs, calves, feet and back.

This elegant model leads the way in innovative design and spa-therapy.



| | |
|-------------------|--|
| Dimensions Havasu | 79" x 79" x 37" (201cm x 201cm x 94cm) Triangular |
| Dimensions Vegas | 59" x 77" x 31.5" (150cm x 196cm x 80cm) |

| | |
|-----------------------|---------------------|
| Water Capacity Havasu | 300 gallons (1150L) |
| Water Capacity Vegas | 150 gallons (568L) |

| | |
|--------------------|-----------------------------------|
| Jets /Pumps Havasu | 25 jets, (1) 4 HP Dual Speed pump |
| Jets /Pumps Vegas | 11 jets, (1) 2 HP Dual Speed pump |

| | |
|----------------|------------------|
| Seating Havasu | Up to 2-3 people |
| Seating Vegas | Up to 2-3 people |

| | |
|----------|--|
| Features | Eco-Pak Digital Controls 12 volt Underwater Light |
|----------|--|

| | |
|----------------|--|
| Dimensions | 81" x 81" x 37.5" (206cm x 206cm x 95.25 cm) |
| Water Capacity | 400 gallons (1515L) |
| Jets /Pumps | 30 jets, (1) 4 HP Dual Speed pump |
| Seating | Up to 6 people |
| Features | Diverter Valve Controlled Operation 12 volt Underwater Light 2 Neck Jet Therapy Seat Eco-Pak Digital Controls |



ESCONDIDO

This contemporary style easily accommodates a party of 7, with a variety of seating and jet options. Submerge yourself in this avalanche of rejuvenation with over a hundred jets targeting neck, lower and upper back, and even feet, for the ultimate in reflexology treatment.



Dimensions 91" x 91" x 39.25"
(231cm x 231cm x 99.75cm)

Water Capacity 500 gallons (1900L)

Jets 114 stainless steel jets
Pumps (3) 4 HP pumps

Seating Up to 7 people

Features Ozone Purification System
Volcano Therapy Jet System
LED Lighting System
with Illuminated Waterfall
5 Neck Jet Therapy Seat
Eco-Pak Digital Controls

ARCTICSPAS.COM



POMONA

This expansive open model is the ultimate for accommodating up to 8 people. This large model with barrier-free seats offers a variety of jet configurations, including a powerful volcano foot jet on the spa floor.

Dimensions 91" x 91" x 39.25"
(231cm x 231cm x 99.75cm)

Water Capacity 500 gallons (1900L)

Jets 75 stainless steel jets
Pumps (2) 4 HP pumps

Seating Up to 8 people

Features Ozone Purification System
Volcano Therapy Jet System
LED Lighting System
with Illuminated Waterfall
5 Neck Jet Therapy Seat
Eco-Pak Digital Controls



COYOTE SPAS®

Box 560

4549 52nd Street

Thorsby, AB T0C 2P0

Toll Free 1-877-777-1577

ARCTICSPAS.COM