

**GIGA**<sup>®</sup>



**DUCA**  
CRANES

## **ELECTROPALANE CU CABLU GIGA**

tip GHM 3201 - GHM 25000 cu capacitatea de ridicare de la 800kg pana la 50000kg

## **ELECTRIC WIRE ROPE HOISTS GIGA**

types GHM 3201 – GHM 25000 with the lifting capacity from 800kg up to 50000kg

## Gama de modele a electropanelor cu cabluri tipurile GHM 3201 - GHM 25000 cu capacitatea de ridicare de la 800kg pana la 50000kg

Dragi parteneri de afaceri, am dori să vă prezentăm noua versiune de catalog pentru palane electrice pe cabluri, tipurile GHM 3201 - GHM 25000. Acest catalog provine din cel vechi. În același timp, se adaugă tipuri noi de palane care fac parte din gama GHM. Au fost modificați unii parametri tehnici pt. palanele individuale în conformitate cu cea mai recentă dezvoltare tehnologică; ele sunt mult mai prietenoase cu utilizatorul și accentul a fost pus pe siguranța în exploatare. Palanele electrice pe cabluri GHM vă oferă o soluție tehnică optimă însoțită de un bun raport pret/performanța. Suntem convinși că această gamă de palane va satisface cerințele chiar și celor mai exigenți clienți și ca veți fi mulțumiți de aceste produse cel puțin în măsura în care sunteți mulțumiți de predecesorii acestora.

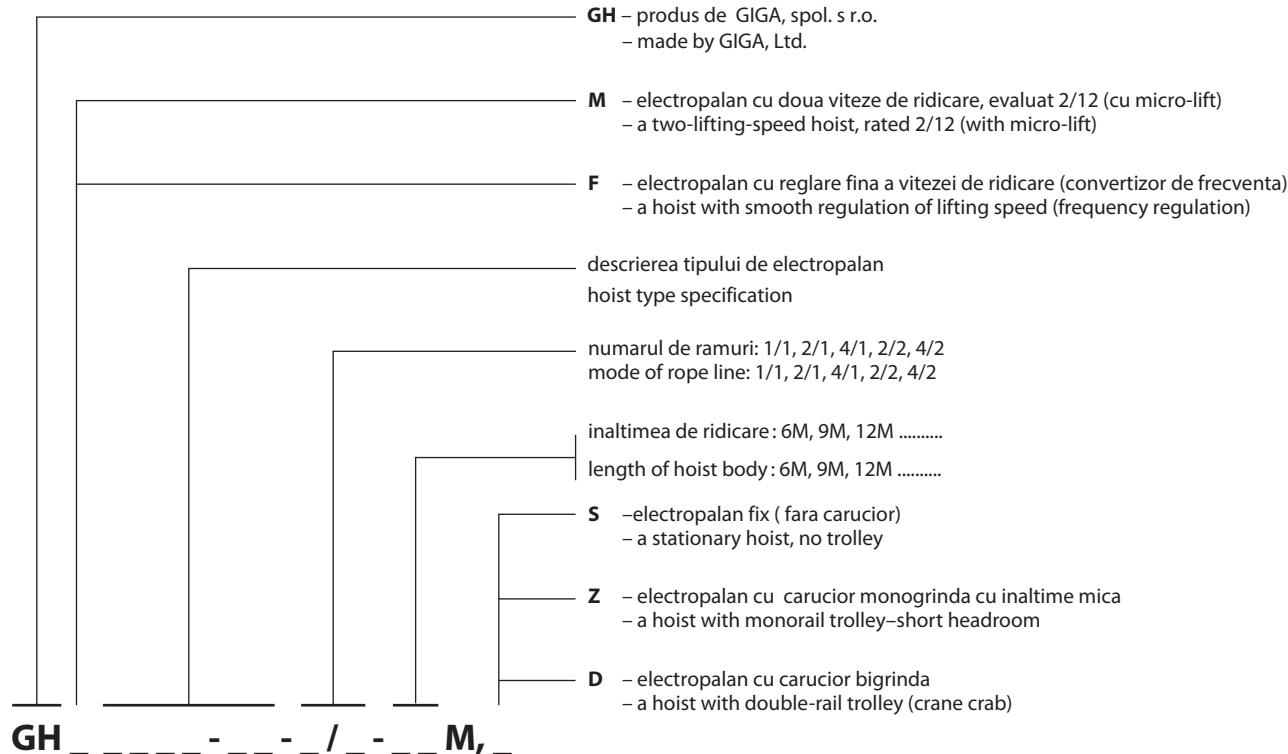
## The model range of electric wire rope hoists types GHM 3201 - GHM 25000 with the lifting capacity from 800kg up to 50000kg

Dear business partners, we would like to introduce to you the new version of catalogue for electric wire rope hoists, types GHM 3201 - GHM 25000. This catalogue coming-out from old catalogue. At the same time, some new types of hoists from the model range GHM are added. Some technical parameters of individual hoists have been changed in accordance with the latest development of technology; they are more user-friendly and the emphasis has been laid on the safety of operation. Our electric wire rope hoists GHM offer you an optimal technical solution accompanied with a good price/performance ratio. We are convinced that this model range of hoists will meet the requirements of even the most demanding customers and that you will be satisfied with these products at least to the extent you are satisfied with their predecessors.

### Identificarea tipului de electropalan / Hoist type identification

#### Identificare / Identification:

#### Semnificatie / Meaning:



Exemplu de identificare electropalan: Electropalan cu capacitatea de ridicare 5000 kg, inaltime de ridicare 9 m, viteza de ridicare 0.8/5 m/min, carucior monogrinda cu inaltime mica:

Example of hoist identification: A hoist with lifting capacity 5000 kg, lifting height 9 m, lifting speed 0.8/5 m/min, with monorail trolley – short headroom:

**GHM 5000-20-4/1-9M,Z**

### Conditii restrictive de proiectare pentru electropalanele de serie conform ISO 12482-1 Projected restrictive conditions for serial hoists as per ISO 12482-1

Spectru de incarcare Load Spectrum	Coeficientul spectrului de incarcare Km Coefficient of load spectrum Km	Timpul prevazut de functionare, D [ore] / Projected operating time, D [hours]							
		Grupa mecanica conform ISO 4301-1 / Mechanism group as per ISO 4301-1							
		M1	M2	M3	M4	M5	M6	M7	M8
Usor / Light	$< 0.125$	800	1 600	3 200	6 300	12 500	25 000	50 000	100 000
Mediu / Medium	$0.125 < K_m \leq 0.25$	400	800	1 600	3 200	6 300	12 500	25 000	50 000
Greu / Heavy	$0.25 < K_m \leq 0.5$	200	400	800	1 600	3 200	6 300	12 500	25 000
Foarte greu / Very heavy	$0.5 < K_m \leq 1$	100	200	400	800	1 600	3 200	6 300	12 500

CAPACITATEA DE RIDICARE LIFTING CAPACITY	VITEZA DE RIDICARE LIFTING SPEED	GRUPA MECANICA MECHANISM GROUP		TIP SI MOD DISPUNERE RAMURI ROPE REEVING	INALTIMEA DE RIDICARE [ m ] LIFTING HEIGHT [ m ]									MOTOR RIDICARE LIFTING MOTOR		TIP ELECTROPALAN - PAGINA TYPE OF HOIST - PAGE			VITEZA CARUCIOR TROLLEY SPEED	RAND NR.	
		Standard	Max.		6M	9M	12M	15M	18M	21M	24M	27M	30M	kw	% ED	"S"	"Z"	"D"			
800	2.6/16	M6	3m		GHM 3200 - 16 - 1/1 -	24	36	48	60	72	84	96	108	120	0.67/4	S3-20/40% 300/150	*B				1
	3.2/20	M6	3m		GHM 3200 - 20 - 1/1 -	24	36	48	60	72	84	96	108	120	0.8/4.8	S3-20/40% 300/150	*B				2
	0.64-16	M6	3m		GHF 3200 - 16 - 1/1 -	24	36	48	60	72	84	96	108	120	4	S3-40% 150	*B				3
	0.8-20	M6	3m		GHF 3200 - 20 - 1/1 -	24	36	48	60	72	84	96	108	120	4.8	S3-40% 150	*B				4
1000	1.6/10	M5	2m		GHM 2001 - 20 - 2/1 -	12	18	24	30	36	42	-	-	-	0.45/3.2	S3-60% 360	*A				5
	0.4-10	M5	2m		GHF 2001 - 20 - 2/1 -	12	18	24	30	36	42	-	-	-	3.2	S3-60% 360	*A				6
	2.6/16	M5	2m	M6	3m	24	36	48	60	72	84	96	108	120	0.67/4	S3-20/40% 300/150	*B				7
	3.2/20	M5	2m	M6	3m	24	36	48	60	72	84	96	108	120	0.8/4.8	S3-20/40% 300/150	*B				8
1250	0.64-16	M5	2m	M6	3m	24	36	48	60	72	84	96	108	120	4	S3-40% 150	*B				9
	0.8-20	M5	2m	M6	3m	24	36	48	60	72	84	96	108	120	4.8	S3-40% 150	*B				10
	1.6/10	M5	2m		GHM 2501 - 20 - 2/1 -	12	18	24	30	36	42	-	-	-	0.45/3.2	S3-50% 300	*A				11
	0.4-10	M5	2m		GHF 2501 - 20 - 2/1 -	12	18	24	30	36	42	-	-	-	3.2	S3-50% 300	*A				12
1600	2.6/16	M4	1Am	M6	3m	24	36	48	60	72	84	96	108	120	0.67/4	S3-20/40% 300/150	*B				13
	3.2/20	M4	1Am	M5	2m	24	36	48	60	72	84	96	108	120	0.8/4.8	S3-20/40% 300/150	*B				14
	0.64-16	M4	1Am	M6	3m	24	36	48	60	72	84	96	108	120	4	S3-40% 150	*B				15
	0.8-20	M4	1Am	M5	2m	24	36	48	60	72	84	96	108	120	4.8	S3-40% 150	*B				16
2000	1.6/10	M5	2m		GHM 3201 - 20 - 2/1 -	12	18	24	30	36	42	-	-	-	0.45/3.2	S3-40% 240	*A				17
	0.4-10	M5	2m		GHF 3201 - 20 - 2/1 -	12	18	24	30	36	42	-	-	-	3.2	S3-40% 240	*A				18
	1.3/8	M6	3m		GHM 3200 - 16 - 2/1 -	12	18	24	30	36	42	48	54	60	0.67/4	S3-20/40% 300/150	*B	*C	*D		19
	1.6/10	M6	3m		GHM 3200 - 20 - 2/1 -	12	18	24	30	36	42	48	54	60	0.8/4.8	S3-20/40% 300/150	*B	*C	*D		20
2000	0.32-8	M6	3m		GHF 3200 - 16 - 2/1 -	12	18	24	30	36	42	48	54	60	4	S3-40% 150	*B	*C	*D		21
	0.4-10	M6	3m		GHF 3200 - 20 - 2/1 -	12	18	24	30	36	42	48	54	60	4.8	S3-40% 150	*B	*C	*D		22
	3.2/20	M6	3m		GHM 6300 - 20 - 1/1 -	24	36	48	60	72	84	96	108	120	1.25/7.6	S3-50% 300	*E				23
	0.8-20	M6	3m		GHF 6300 - 20 - 1/1 -	24	36	48	60	72	84	96	108	120	7.6	S3-50% 300	*E				24
2000	0.8/5	M5	2m		GHM 2001 - 20 - 4/1 -	6	9	12	15	18	21	-	-	-	0.45/3.2	S3-60% 360	*A				25
	0.2-5	M5	2m		GHF 2001 - 20 - 4/1 -	6	9	12	15	18	21	-	-	-	3.2	S3-60% 360	*A				26
	1.3/8	M6	3m		GHM 4000 - 16 - 2/1 -	12	18	24	30	36	42	48	54	60	0.67/4	S3-20/40% 300/150	*B	*C	*D		27
	1.6/10	M6	3m		GHM 4000 - 20 - 2/1 -	12	18	24	30	36	42	48	54	60	0.8/4.8	S3-20/40% 300/150	*B	*C	*D		28
2000	0.32-8	M6	3m		GHF 4000 - 16 - 2/1 -	12	18	24	30	36	42	48	54	60	4	S3-40% 150	*B	*C	*D		29
	0.4-10	M6	3m		GHF 4000 - 20 - 2/1 -	12	18	24	30	36	42	48	54	60	4.8	S3-40% 150	*B	*C	*D		30
	2.6/16	M6	3m		GHM 8000 - 16 - 1/1 -	24	36	48	60	72	84	96	108	120	1.5/9.5	S3-60% 360	*E				31
	0.64-16	M6	3m		GHF 8000 - 16 - 1/1 -	24	36	48	60	72	84	96	108	120	9.5	S3-60% 360	*E				32
2000	3.2/20	M5	2m	M6	3m	24	36	48	60	72	84	96	108	120	1.25/7.6 (1.5/9.5)	S3-40%(50%) 240(300)	*E				33
	0.8-20	M5	2m	M6	3m	24	36	48	60	72	84	96	108	120	7.6 (9.5)	S3-40%(50%) 240(300)	*E				34

CAPACITATEA DERIDICARE LIFTING CAPACITY	VITEZA DE RIDICARE LIFTING SPEED	GRUPA MECANICA MECHANISM GROUP				TIP SI MOD DISPUNERE RAMURI ROPE REEVING	INALTIMEA DE RIDICARE [ m ] LIFTING HEIGHT [ m ]										MOTOR RIDICARE LIFTING MOTOR		TIP ELECTROPALAN - PAGINA TYPE OF HOIST - PAGE			VITEZA CARUCIOR TROLLEY SPEED	RAND Nr. ROW No.
		Standard		Max.			LUNGIMEA CABLULUI LENGHT OF HOISTBODY										kW	% ED	"S"	"Z"	"D"		
		ISO	FEM	ISO	FEM		6M	9M	12M	15M	18M	21M	24M	27M	30M								
2500	0.8/5	M5	2m			GHM 2501 - 20 - 4/1 -	6	9	12	15	18	21	-	-	-	-	0.45/3.2	S3-50% 300	*A			5/20m/мин cu frana with brake 2x0.04/0.18kW	35
	0.2-5	M5	2m			GHF 2501 - 20 - 4/1 -	6	9	12	15	18	21	-	-	-	-	3.2	S3-50% 300	*A				
	1.3/8	M6	3m			GHM 5000 - 16 - 2/1 -	12	18	24	30	36	42	48	54	60	0.67/4	S3-20/40% 300/150	*B	*C	*D			
	1.6/10	M5	2m			GHM 5000 - 20 - 2/1 -	12	18	24	30	36	42	48	54	60	0.8/4.8	S3-20/40% 300/150	*B	*C	*D			
	0.32-8	M6	3m			GHF 5000 - 16 - 2/1 -	12	18	24	30	36	42	48	54	60	4	S3-40% 150	*B	*C	*D			
	0.4-10	M5	2m			GHF 5000 - 20 - 2/1 -	12	18	24	30	36	42	48	54	60	4.8	S3-40% 150	*B	*C	*D			
	2.6/16	M5	2m			GHM 10000 - 16 - 1/1 -	24	36	48	60	72	84	96	108	120	1.5/9.5	S3-50% 300	*E					
	0.64-16	M5	2m			GHF 10000 - 16 - 1/1 -	24	36	48	60	72	84	96	108	120	9.5	S3-50% 300	*E					
	3.2/20	M4	1Am	M5	2m		GHM 10000 - 20 - 1/1 -	24	36	48	60	72	84	96	108	120	1.5/9.5	S3-40% 240	*E				
	0.8-20	M4	1Am	M5	2m		GHF 10000 - 20 - 1/1 -	24	36	48	60	72	84	96	108	120	9.5	S3-40% 240	*E				
3200	0.8/5	M5	2m			GHM 3201 - 20 - 4/1 -	6	9	12	15	18	21	-	-	-	-	0.45/3.2	S3-40% 240	*A			5/20m/мин cu frana with brake 2x0.04/0.18kW	45
	0.2-5	M5	2m			GHF 3201 - 20 - 4/1 -	6	9	12	15	18	21	-	-	-	-	3.2	S3-40% 240	*A				
	0.6/4	M6	3m			GHM 3200 - 16 - 4/1 -	6	9	12	15	18	21	24	27	30	0.67/4	S3-20/40% 300/150	*C		*D			
	0.16-4	M6	3m			GHF 3200 - 16 - 4/1 -	6	9	12	15	18	21	24	27	30	4	S3-40% 150	*B	*C	*D			
	0.8/5	M6	3m			GHM 3200 - 20 - 4/1 -	6	9	12	15	18	21	24	27	30	0.8/4.8	S3-20/40% 300/150	*B	*C	*D			
	0.2-5	M6	3m			GHF 3200 - 20 - 4/1 -	6	9	12	15	18	21	24	27	30	4.8	S3-40% 150	*B	*C	*D			
	1.6/10	M6	3m			GHM 6300 - 20 - 2/1 -	12	18	24	30	36	42	48	54	60	1.25/7.6	S3-50% 300	*E	*F	*G			
	0.4-10	M6	3m			GHF 6300 - 20 - 2/1 -	12	18	24	30	36	42	48	54	60	7.6	S3-50% 300	*E	*F	*G			
	2.6/16	M4	1Am			GHM 12500 - 16 - 1/1 -	24	36	48	60	72	84	96	108	120	1.5/9.5	S3-40% 240	*E					
	0.64-16	M4	1Am			GHF 12500 - 16 - 1/1 -	24	36	48	60	72	84	96	108	120	9.5	S3-40% 240	*E					
4000	0.6/4	M6	3m			GHM 4000 - 16 - 4/1 -	6	9	12	15	18	21	24	27	30	0.67/4	S3-20/40% 300/150	*B	*C	*D	5/20m/мин cu frana with brake 2x0.04/0.18kW	55	
	0.8/5	M6	3m			GHM 4000 - 20 - 4/1 -	6	9	12	15	18	21	24	27	30	0.8/4.8	S3-20/40% 300/150	*B	*C	*D			
	0.16-4	M6	3m			GHF 4000 - 16 - 4/1 -	6	9	12	15	18	21	24	27	30	4	S3-40% 150	*B	*C	*D			
	0.2-5	M6	3m			GHF 4000 - 20 - 4/1 -	6	9	12	15	18	21	24	27	30	4.8	S3-40% 150	*B	*C	*D			



CAPACITATEA DE RIDICARE LIFTING CAPACITY	VITEZA DE RIDICARE LIFTING SPEED	GRUPA MECANICA MECHANISM GROUP				TIP SI MOD DISPUNERE RAMURI ROPE REEVING	INALTIMEA DE RIDICARE [ m ] LIFTING HEIGHT [ m ]										MOTOR RIDICARE LIFTING MOTOR		TIP ELECTROPALAN - PAGINA TYPE OF HOIST - PAGE			VITEZA CARUCIOR TROLLEY SPEED	RAND Nr. ROW No.
		Standard		Max.			LUNGIMEA CABLULUI LENGHT OF HOIST BODY										kW	% ED	"S"	"Z"	"D"		
		ISO	FEM	ISO	FEM		6M	9M	12M	15M	18M	21M	24M	27M	30M								
8000	0.6/4	M6	3m			GHM 8000 - 16 - 4/1 -	6	9	12	15	18	21	24	27	30	1.5/9.5	S3-60% 360	*F	*F		5/20m/мин cu frana with brake 2x0.09/0.37kW	87	
							6	9	-	10	13	16	19	22	25			*E	*G				
	0.16-4	M6	3m			GHF 8000 - 16 - 4/1 -	6	9	12	15	18	21	24	27	30	9.5	S3-60% 360	*F	*F	*G		88	
							6	9	-	10	13	16	19	22	25			*E	*G				
	0.8/5	M5	2m		3m		GHM 8000 - 20 - 4/1 -	6	9	12	15	18	21	24	27	30	1.25/7.6 (1.5/9.5)	S3-40%(50%) 240(300)	*F	*F	*G		89
								6	9	-	10	13	16	19	22	25			*E	*G			
	10000	0.2-5	M5	2m		3m	GHF 8000 - 20 - 4/1 -	6	9	12	15	18	21	24	27	30	7.6 (9.5)	S3-40%(50%) 240(300)	*F	*F	*G		90
								6	9	-	10	13	16	19	22	25			*E	*G			
1/7		M6	3m			GHM 16000 - 14 - 2/1 -	12	18	24	30	36	42	48	54	60	2.6/16	S3-50% 300	*H	*I	*J	5/20m/мин cu frana with brake 2x0.12/0.55kW	91	
							12	18	24	30	36	42	48	54	60			*H	*I	*J			
1.3/8		M5	2m			GHM 16000 - 16 - 2/1 -	12	18	24	30	36	42	48	54	60	2.6/16	S3-40% 240	*H	*I	*J		92	
							12	18	24	30	36	42	48	54	60			*H	*I	*J			
0.25-7		M6	3m			GHF 16000 - 14 - 2/1 -	12	18	24	30	36	42	48	54	60	16	S3-50% 300	*H	*I	*J		93	
							12	18	24	30	36	42	48	54	60			*H	*I	*J			
0.32-8	M5	2m			GHF 16000 - 16 - 2/1 -	12	18	24	30	36	42	48	54	60	16	S3-40% 240	*H	*I	*J	2x0.12/0.55kW	94		
						12	18	24	30	36	42	48	54	60			*H	*I	*J				
12500	0.6/4	M5	2m			GHM 10000 - 16 - 4/1 -	6	9	12	15	18	21	24	27	30	1.5/9.5	S3-50% 300	*F	*F	*G		95	
							6	9	-	10	13	16	19	22	25			*E	*G				
	0.16-4	M5	2m			GHF 10000 - 16 - 4/1 -	6	9	12	15	18	21	24	27	30	9.5	S3-50% 300	*F	*F	*G	5/20m/мин cu frana with brake 2x0.09/0.37kW	96	
							6	9	-	10	13	16	19	22	25			*E	*G				
	0.8/5	M4	1Am		2m		GHM 10000 - 20 - 4/1 -	6	9	12	15	18	21	24	27	30	1.5/9.5	S3-40% 240	*F	*F	*G		97
								6	9	-	10	13	16	19	22	25			*E	*G			
	0.2-5	M4	1Am				GHF 10000 - 20 - 4/1 -	6	9	12	15	18	21	24	27	30	9.5	S3-40% 240	*F	*F	*G		98
								6	9	-	10	13	16	19	22	25			*E	*G			
1/7	M5	2m				GHM 20000 - 14 - 2/1 -	12	18	24	30	36	42	48	54	60	2.6/16	S3-40% 240	*H	*I	*J	5/20m/мин cu frana with brake 2x0.12/0.55kW	99	
							12	18	24	30	36	42	48	54	60			*H	*I	*J			
1.3/8	M4	1Am				GHM 20000 - 16 - 2/1 -	12	18	24	30	36	42	48	54	60	2.6/16	S3-30% 180	*H	*I	*J		100	
							12	18	24	30	36	42	48	54	60			*H	*I	*J			
0.25-7	M5	2m				GHF 20000 - 14 - 2/1 -	12	18	24	30	36	42	48	54	60	16	S3-40% 240	*H	*I	*J	2x0.12/0.55kW	101	
							12	18	24	30	36	42	48	54	60			*H	*I	*J			
0.32-8	M4	1Am				GHF 20000 - 16 - 2/1 -	12	18	24	30	36	42	48	54	60	16	S3-30% 180	*H	*I	*J		102	
							12	18	24	30	36	42	48	54	60			*H	*I	*J			
0.6/4	M4	1Am				GHM 12500 - 16 - 4/1 -	6	9	12	15	18	21	24	27	30	1.5/9.5	S3-40% 240	*F	*F	*G	5/20m/мин cu frana with brake 2x0.12/0.55kW	103	
							6	9	-	10	13	16	19	22	25			*E	*G				
0.16-4	M4	1Am				GHF 12500 - 16 - 4/1 -	6	9	12	15	18	21	24	27	30	9.5	S3-40% 240	*F	*F	*G		104	
							6	9	-	10	13	16	19	22	25			*E	*G				
0.6/4	M6	3m				GHM 16000 - 16 - 4/1 -	6	9	12	15	18	21	24	27	30	2.6/16	S3-50% 300	*H	*I	*J	5/20m/мин cu frana with brake 2x0.18/0.75kW	105	
							6	9	12	15	18	21	24	27	30			*H	*I	*J			
0.16-4	M6	3m				GHF 16000 - 16 - 4/1 -	6	9	12	15	18	21	24	27	30	16	S3-50% 300	*H	*I	*J		106	
							6	9	12	15	18	21	24	27	30			*H	*I	*J			
1/7	M4	1Am				GHM 25000 - 14 - 2/1 -	12	18	24	30	36	42	48	54	60	2.6/16	S3-30% 180	*H	*I	*J	2x0.18/0.75kW	107	
							12	18	24	30	36	42	48	54	60			*H	*I	*J			
0.25-7	M4	1Am				GHF 25000 - 14 - 2/1 -	12	18	24	30	36	42	48	54	60	16	S3-30% 180	*H	*I	*J		108	
							12	18	24	30	36	42	48	54	60			*H	*I	*J			

53B35F3F73 67 D:6:53D7	HF7L3.67 D:6:53D7	GRUPA MECANICA MECHANISM GROUP		TIP SI MOD DISPUNERE RAMURI ROPE REEVING		INALTIMEA DE RIDICARE [ m ] LIFTING HEIGHT [ m ]										MOTOR RIDICARE LIFTING MOTOR		TIP ELECTROPALAN - PAGINA TYPE OF HOIST - PAGE			VITEZA CARUCIOR TROLLEY SPEED	RAND Nr. ROW No.			
		Standard	Max.	ISO	FEM	GHX xxxx - xx - x/x -	6M	9M	12M	15M	18M	21M	24M	27M	30M	kW	% ED	"S"	"Z"	"D"					
																							ISO	FEM	GHM 16000 - 14 - 4/1 -
16000	0.5/3.5	M6	3m			6	9	12	15	18	21	24	27	30	2.6/16	S3-50% 300	*/H	*/I	*/J	109					
	0.6/4	M5	2m			6	9	12	15	18	21	24	27	30	2.6/16	S3-40% 240	*/H	*/I	*/J	110					
	0.12-3.5	M6	3m			6	9	12	15	18	21	24	27	30	16	S3-50% 300	*/H	*/I	*/J	111					
	0.16-4	M5	2m			6	9	12	15	18	21	24	27	30	16	S3-40% 240	*/H	*/I	*/J	112					
20000	0.5/3.5	M5	2m			6	9	12	15	18	21	24	27	30	2.6/16	S3-40% 240	*/H	*/I	*/J	113					
	0.6/4	M4	1Am			6	9	12	15	18	21	24	27	30	2.6/16	S3-30% 180	*/H	*/I	*/J	114					
	0.12-3.5	M5	2m			6	9	12	15	18	21	24	27	30	16	S3-40% 240	*/H	*/I	*/J	115					
	0.16-4	M4	1Am			6	9	12	15	18	21	24	27	30	16	S3-30% 180	*/H	*/I	*/J	116					
25000	0.5/3.5	M4	1Am			6	9	12	15	18	21	24	27	30	2.6/16	S3-30% 180	*/H	*/I	*/J	117					
	0.12-3.5	M4	1Am			6	9	12	15	18	21	24	27	30	16	S3-30% 180	*/H	*/I	*/J	118					
32000	0.5/3.5	M6	3m			6	9	12	15	18	21	24	27	30	2x2.6/16	S3-50% 300			*/K	119					
	0.6/4	M5	2m			6	9	12	15	18	21	24	27	30	2x2.6/16	S3-40% 240			*/K	120					
	0.12-3.5	M6	3m			6	9	12	15	18	21	24	27	30	2x16	S3-50% 300			*/K	121					
	0.16-4	M5	2m			6	9	12	15	18	21	24	27	30	2x16	S3-40% 240			*/K	122					
40000	0.5/3.5	M5	2m			6	9	12	15	18	21	24	27	30	2x2.6/16	S3-40% 240			*/K	123					
	0.6/4	M4	1Am			6	9	12	15	18	21	24	27	30	2x2.6/16	S3-30% 180			*/K	124					
	0.12-3.5	M5	2m			6	9	12	15	18	21	24	27	30	2x16	S3-40% 240			*/K	125					
	0.16-4	M4	1Am			6	9	12	15	18	21	24	27	30	2x16	S3-30% 180			*/K	126					
50000	0.5/3.5	M4	1Am			6	9	12	15	18	21	24	27	30	2.6/16	S3-30% 180			*/K	127					
	0.12-3.5	M4	1Am			6	9	12	15	18	21	24	27	30	2x16	S3-30% 180			*/K	128					

Note: Tipurile de electropalane cu ramurile 2/2, 4/2 si eventual alte variante, se realizeaza la cerere.

Viteza caruciorului specificata in tabel este valabila doar pentru electropalane cu carucior monogrinda - inaltime mica.

Pentru electropalane cu carucior bigrinda livram motoare cu reductor la cererea clientului.

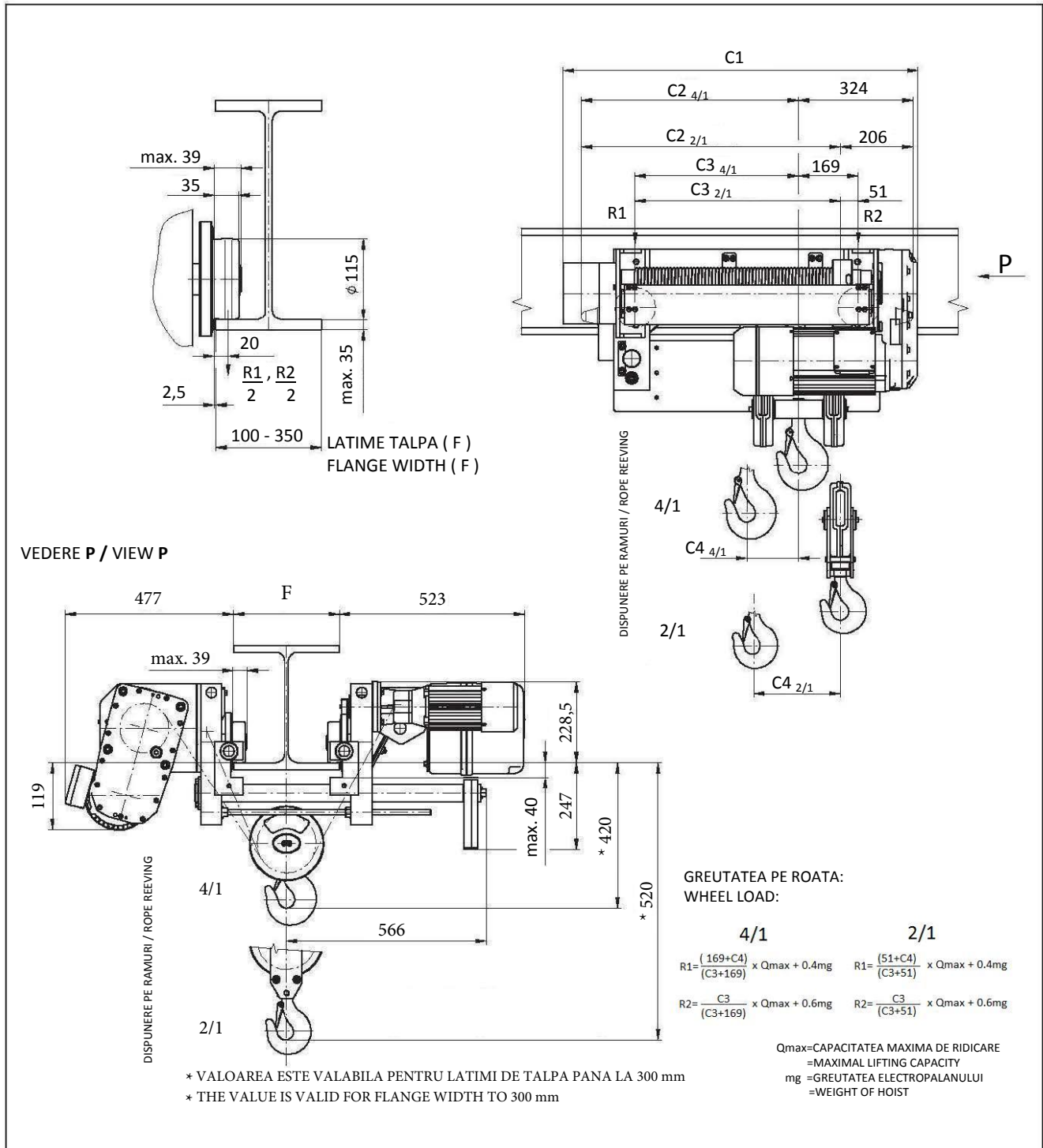
Note: Types of hoists with rope line 2/2, 4/2 and eventually other variants are made on request.

The trolley speed in the table is correct only for mode of hoist with monorail trolley - short headroom.

For a hoist with double-rail trolley (crane crab) we supply motors with gearbox on customer request.

ELECTROPALANE CU CABLU PENTRU CARUCIOR  
MONOGRINDA - INALTIME MICA  
TIP GHF, GHM 2001, 2501, 3201 -2/1,-4/1  
CAPACITATEA DE RIDICARE INTRE 1000 -3200 kg

ELECTRIC WIRE ROPE HOISTS WITH MONORAIL  
TROLLEY - SHORT HEADROOM  
TYPE GHF, GHM 2001, 2501, 3201 -2/1,-4/1  
LIFTING CAPACITIES 1000 - 3200 kg



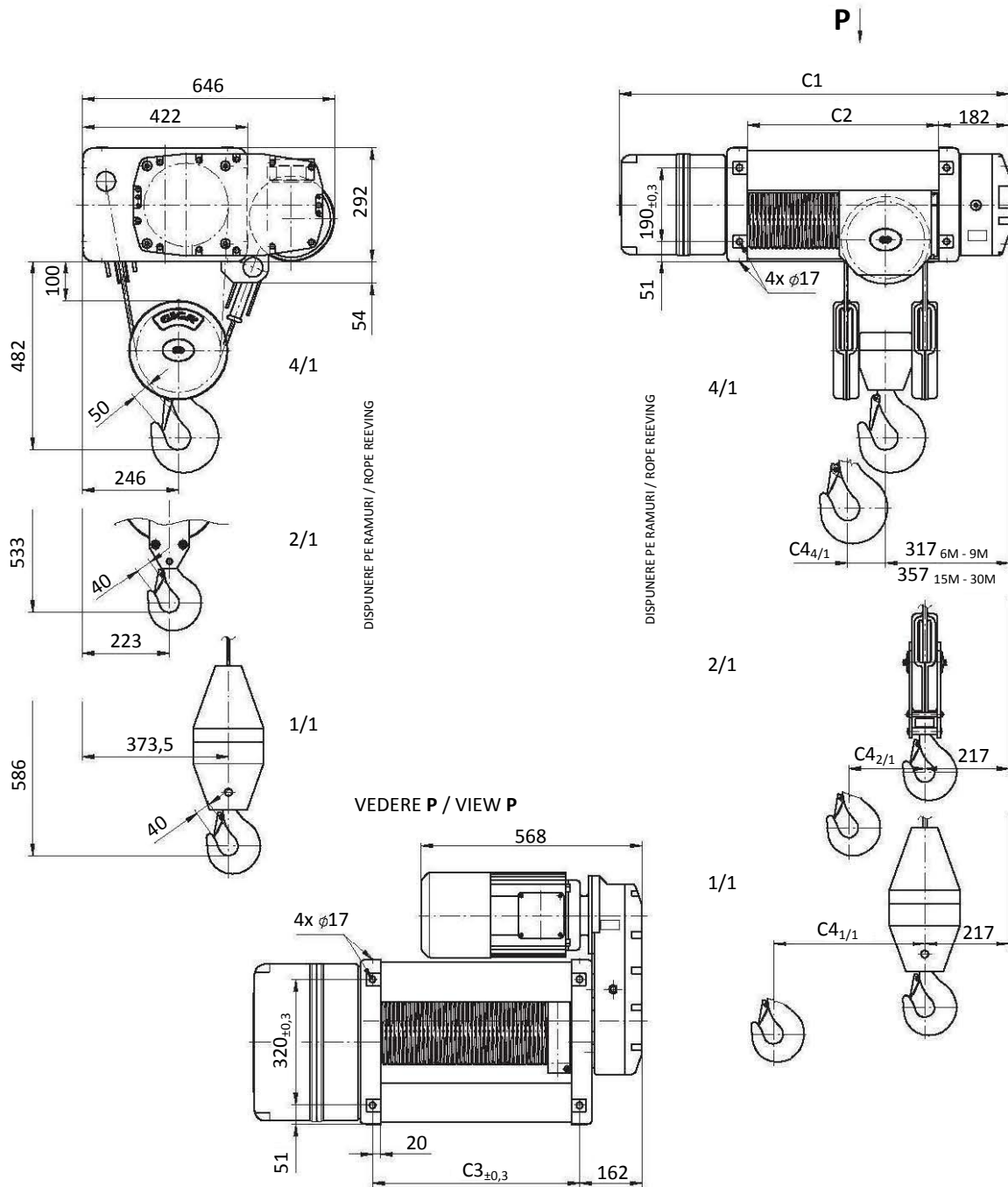
CABLU Ø 8mm / ROPE Ø 8mm

TIP / TYPE	6M	9M	12M	15M	18M	21M	24M	27M	30M
C1	1005	1165	1325	1485	1645	1805			
C2 <sub>4/1</sub> C2 <sub>2/1</sub>	615 733	775 893	935 1053	1095 1213	1255 1373	1415 1533			
C3 <sub>4/1</sub> C3 <sub>2/1</sub>	461 579	621 739	781 899	941 1059	1101 1219	1261 1379			
C4 <sub>4/1</sub> C4 <sub>2/1</sub>	140 280	188 360	236 440	284 520	332 600	380 680			
m <sub>4/1</sub> m <sub>2/1</sub>	325 300	370 345	415 390	460 435	505 480	550 525			



ELECTROPALANE CU CABLU FARA CARUCIOARE (FIXE)  
TIP GHF, GHM 3200 ,4000, 5000 -1/1, -2/1,-4/1  
CAPACITATEA DE RIDICARE INTRE 800 -5000 kg

ELECTRIC WIRE ROPE STATIONARY HOISTS  
TYPE GHF, GHM 3200, 4000, 5000 -1/1,-2/1,-4/1  
LIFTING CAPACITIES 800 - 5000 kg

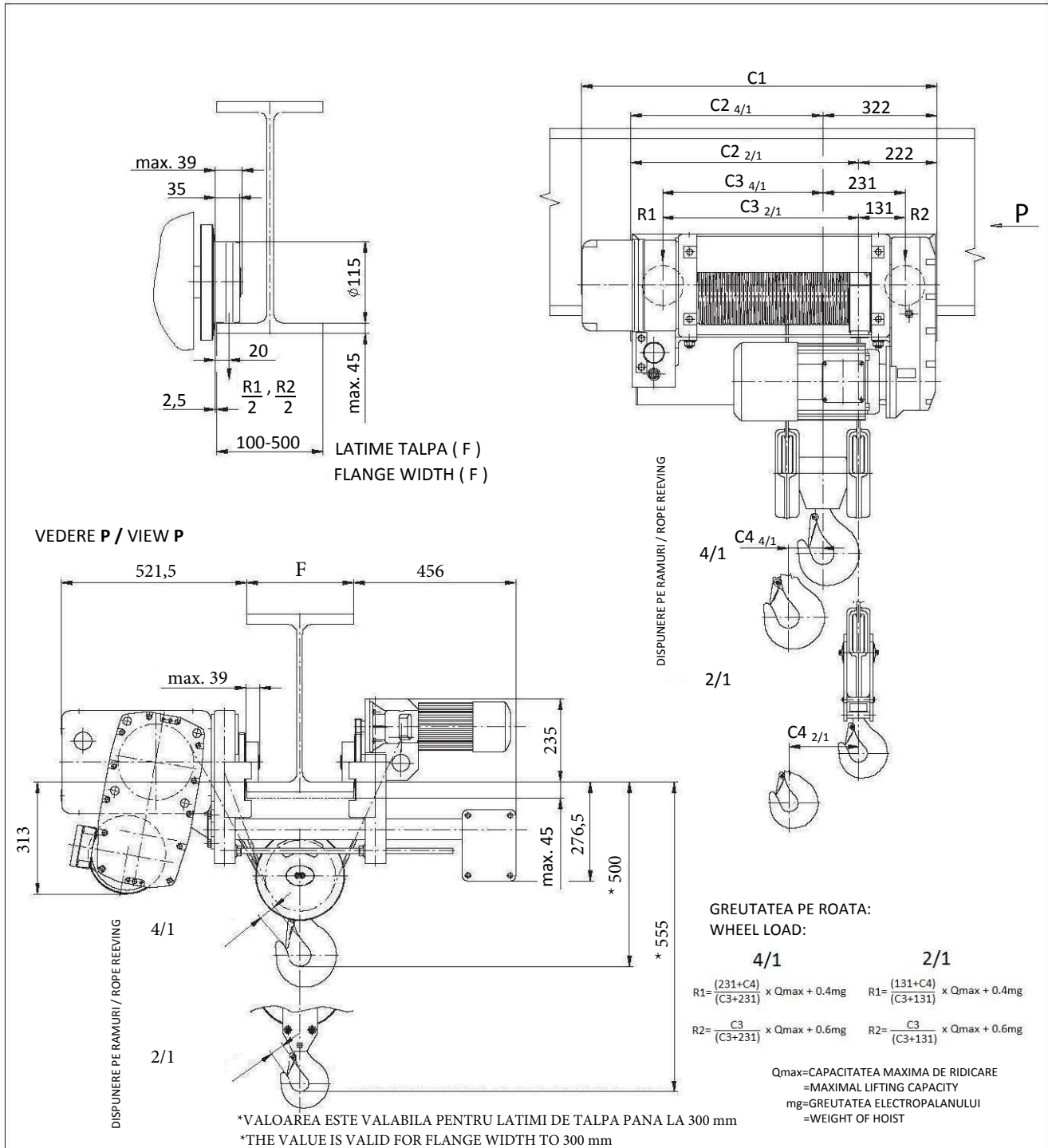


CABLU Ø 9mm / ROPE Ø 9mm

TIP / TYPE		6M	9M	12M	15M	18M	21M	24M	27M	30M																					
C1	C3	997	530	1187	720			1567	1100	1757	1290	1947	1480	2137	1670	2327	1860	2517	2050												
C2	C4 <sub>1/1</sub>	490	388	680	578			1060	958	1250	1148	1440	1338	1630	1528	1820	1718	2010	1908												
C4 <sub>4/1</sub>	C4 <sub>2/1</sub>	97	194	145	289			241	479	289	574	337	669	385	764	433	859	481	954												
m <sub>4/1</sub>	m <sub>2/1</sub>	m <sub>1/1</sub>	[kg]	245	215	215	270	240	240					320	290	290	345	315	315	370	340	340	395	365	365	420	390	390	445	415	415

ELECTROPALANE CU CABLU PENTRU CARUCIOR  
 MONOGRINDA - INALTIME MICA  
 TIP GHF, GHM 3200, 4000, 5000 -2/1,-4/1  
 CAPACITATEA DE RIDICARE INTRE 1600 -5000 kg

ELECTRIC WIRE ROPE HOISTS WITH MONORAIL  
 TROLLEY - SHORT HEADROOM  
 TYPE GHF, GHM 3200, 4000, 5000 -2/1,-4/1  
 LIFTING CAPACITIES 1600 - 5000 kg

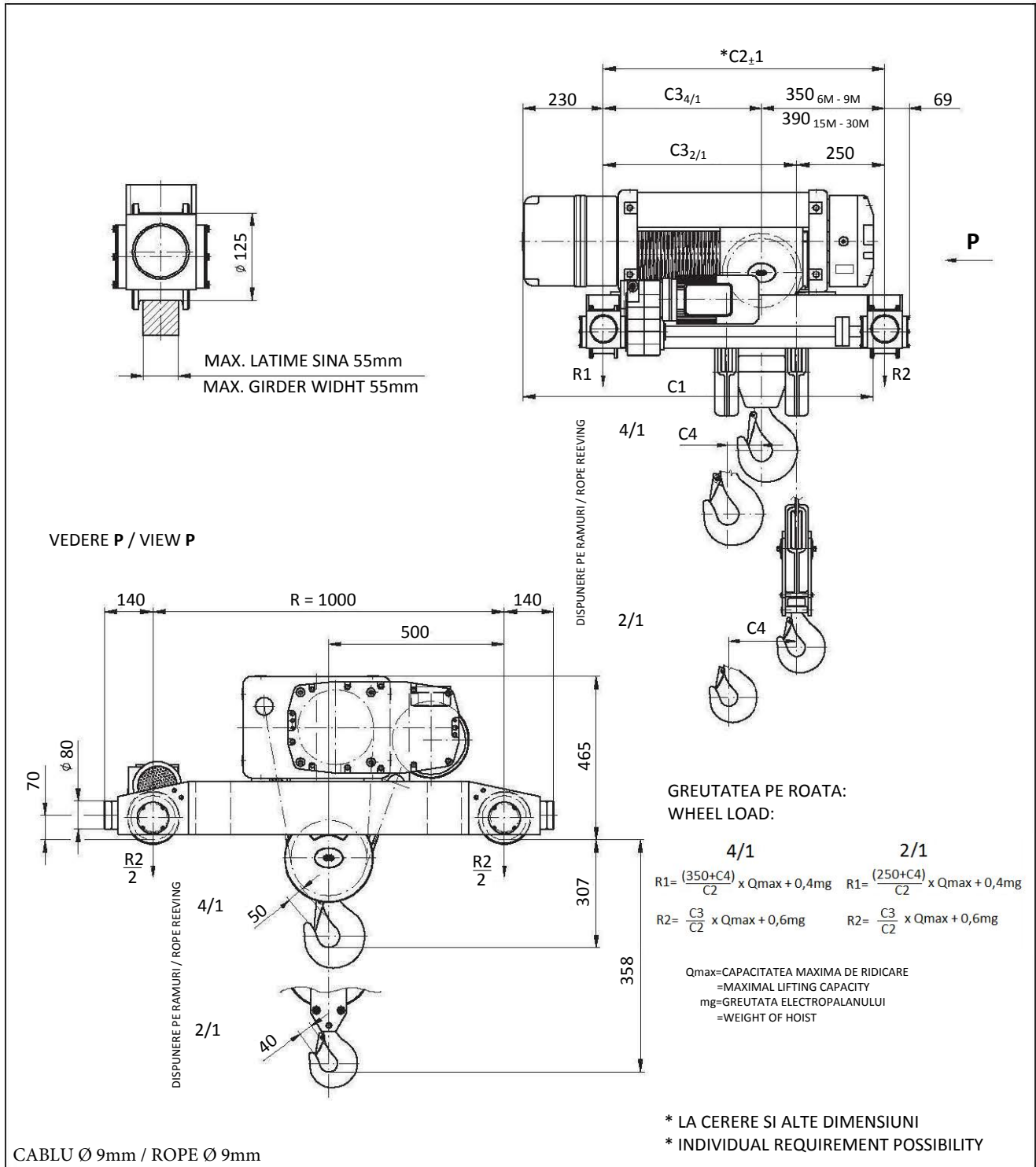


CABLU Ø 9mm / ROPE Ø 9mm

TIP / TYPE		6M	9M	12M	15M	18M	21M	24M	27M	30M									
C1		1001	1191	1381	1571	1761	1951	2141	2331	2521									
C2 <sub>4/1</sub>	C2 <sub>2/1</sub>	540	640	730	830	920	1020	1110	1210	1300	1400	1490	1590	1680	1780	1870	1970	2060	2160
C3 <sub>4/1</sub>	C3 <sub>2/1</sub>	449	549	639	739	829	929	1019	1119	1209	1309	1399	1499	1589	1689	1779	1879	1969	2069
C4 <sub>4/1</sub>	C4 <sub>2/1</sub>	97	194	145	289	193	384	241	479	289	574	337	669	385	764	433	859	481	954
m <sub>4/1</sub>	m <sub>2/1</sub>	495	465	555	525	615	585	675	645	735	705	795	765	855	825	915	885	975	945

ELECTROPALANE CU CABLU PENTRU CARUCIOR  
BGRINDA  
TIP GHF, GHM 3200, 4000, 5000 -2/1,-4/1  
CAPACITATEA DE RIDICARE INTRE 1600 -5000 kg

ELECTRIC WIRE ROPE HOISTS WITH DOUBLE - GIRDER  
TRANSVERSE TROLLEY (CRAB)  
TYPE GHF, GHM 3200, 4000, 5000 -2/1,-4/1  
LIFTING CAPACITIES 1600 - 5000 kg

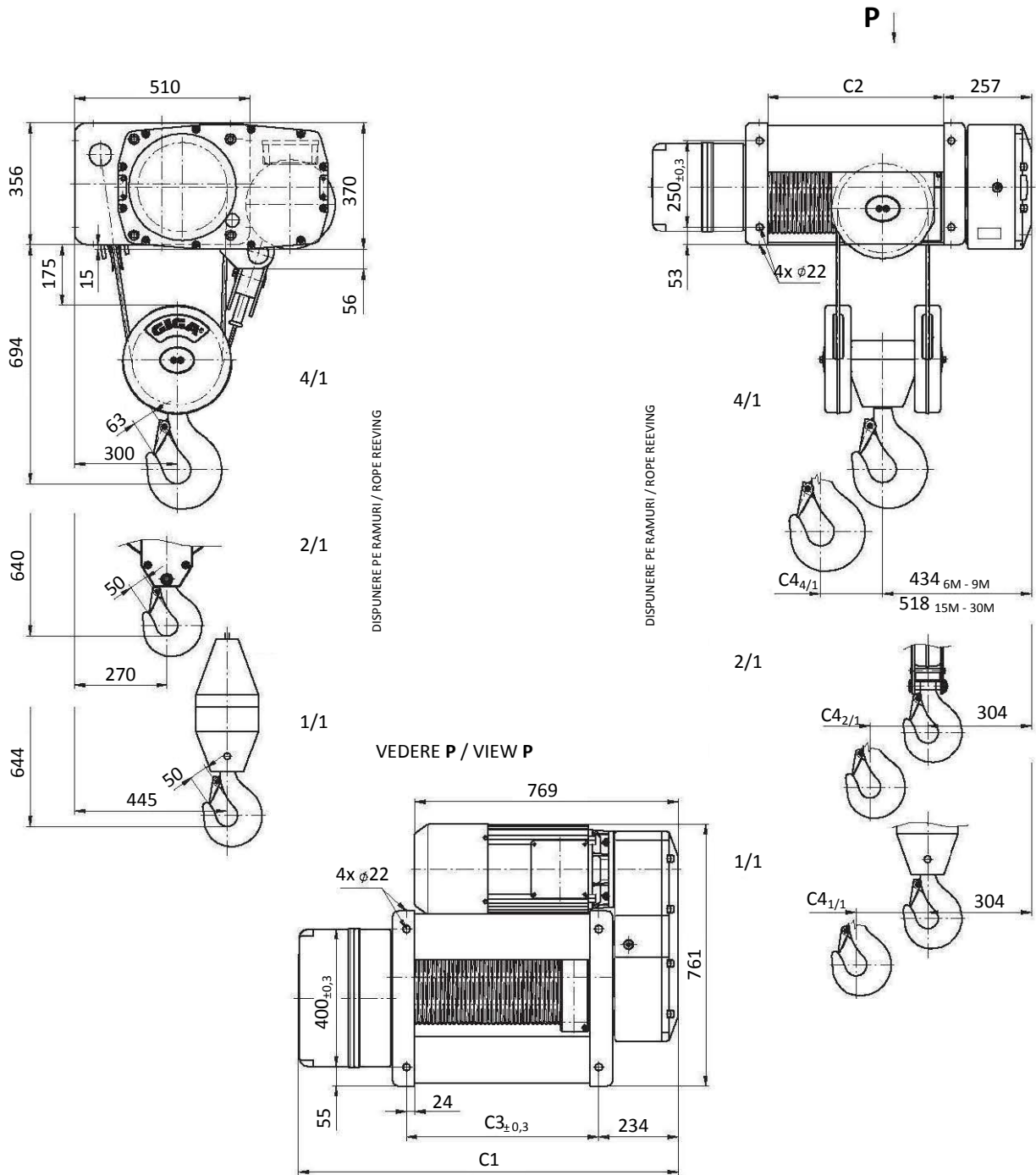


CABLU Ø 9mm / ROPE Ø 9mm

TIP / TYPE		6M		9M		12M		15M		18M		21M		24M		27M		30M			
C1		1001		1191				1571		1761		1951		2141		2331		2521			
C2 <sub>min</sub>		800		990				1370		1560		1750		1940		2130		2320			
C3 <sub>min</sub> 4/1	C3 <sub>min</sub> 2/1	[mm]		450	550	640	740			1020	1120	1210	1310	1400	1500	1590	1690	1780	1880	1970	2070
C4 <sub>4/1</sub>	C4 <sub>2/1</sub>	97	194	145	289			241	479	289	574	337	669	385	764	433	859	481	954		
m <sub>4/1</sub>	m <sub>2/1</sub>	[kg]		385	355	416	386			478	448	509	479	540	510	571	541	602	572	633	603

ELECTROPALANE CU CABLU FARA CARUCIOARE (FIXE)  
TIP GHF, GHM 6300, 8000, 10000, 12500 - 1/1, -2/1, -4/1  
CAPACITATEA DE RIDICARE INTRE 1600 -12500 kg

ELECTRIC WIRE ROPE STATIONARY HOISTS  
TYPE GHF, GHM 6300, 8000, 10000, 12500 - 1/1, -2/1, -4/1  
LIFTING CAPACITIES 1600 - 12500 kg

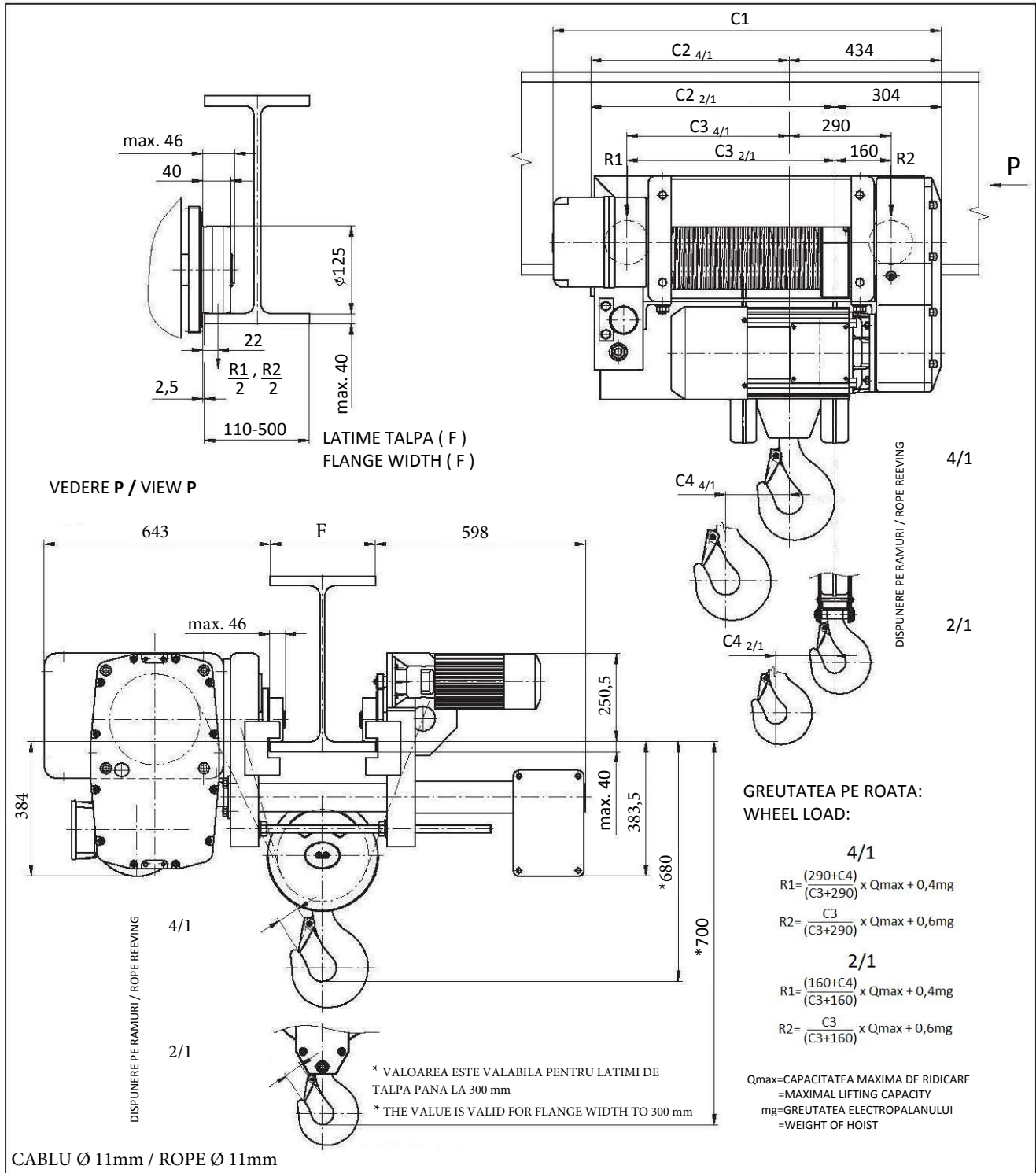


CABLU Ø 11mm / ROPE Ø 11mm

TIP / TYPE		6M		9M		12M		15M		18M		21M		24M		27M		30M											
C1	C3	1107	560	1297	750			1677	1130	1867	1320	2057	1510	2247	1700	2437	1890	2627	2080										
C2	C4 <sub>1/1</sub>	512	404	702	594			1082	974	1272	1164	1462	1354	1652	1544	1842	1734	2032	1924										
C4 <sub>4/1</sub>	C4 <sub>2/1</sub>	101	202	149	297			245	487	293	582	341	677	389	772	437	867	485	962										
m <sub>4/1</sub>	m <sub>2/1</sub>	m <sub>1/1</sub>	[kg]	495	425	405	530	460	440			600	530	510	635	565	545	685	615	580	720	650	615	755	685	650	790	720	685

ELECTROPALANE CU CABLU PENTRU CARUCIOR  
 MONOGRINDA - INALTIME MICA  
 TIP GHF, GHM 6300, 8000, 10000, 12500 -2/1,-4/1  
 CAPACITATEA DE RIDICARE INTRE 3200 -12500 kg

ELECTRIC WIRE ROPE HOISTS WITH MONORAIL  
 TROLLEY - SHORT HEADROOM  
 TYPE GHF, GHM 6300, 8000, 10000, 12500 -2/1,-4/1  
 LIFTING CAPACITIES 3200 - 12500 kg

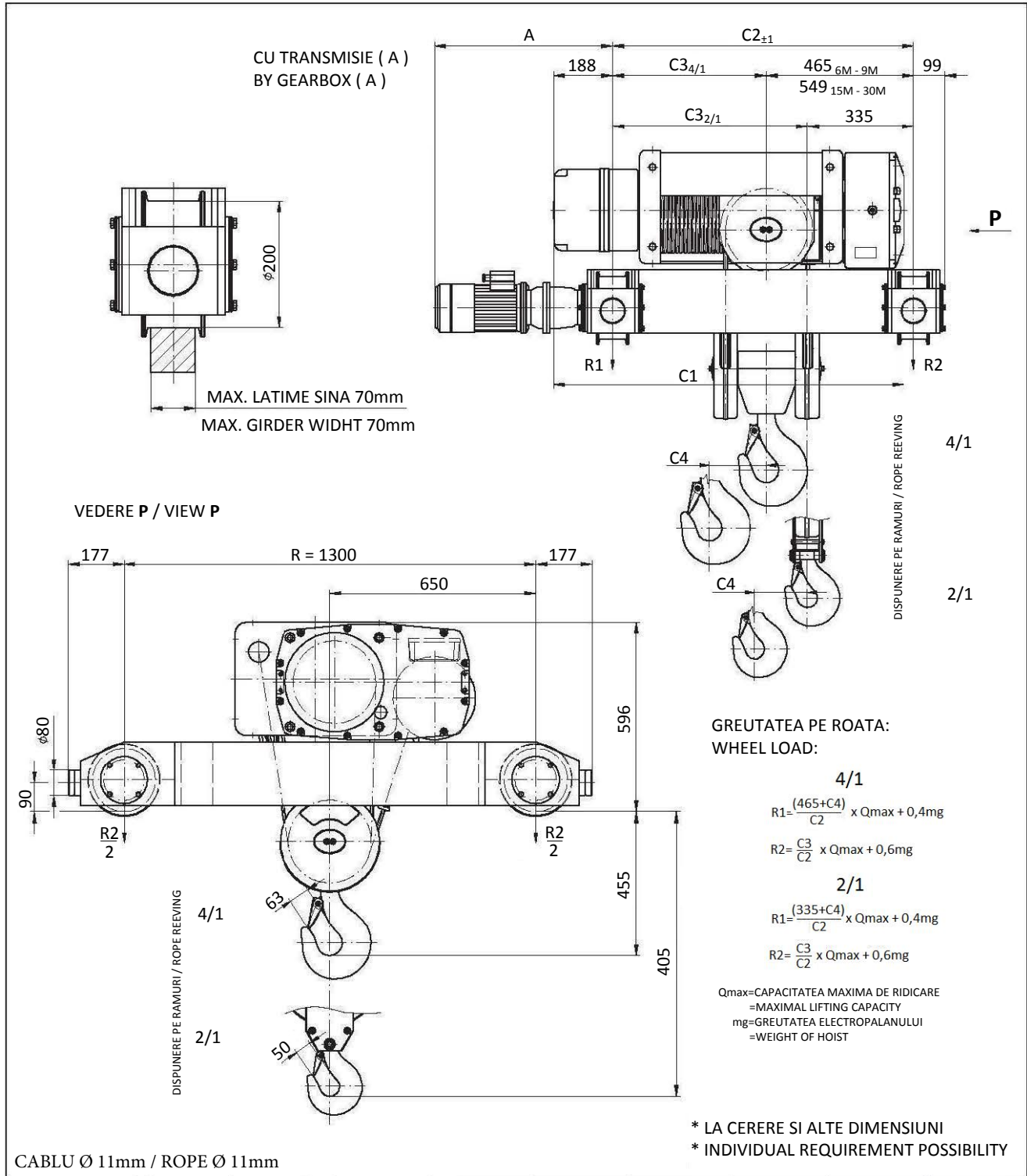


CABLU Ø 11mm / ROPE Ø 11mm

TIP / TYPE	6M	9M	12M	15M	18M	21M	24M	27M	30M
C1	1107	1297	1487	1677	1867	2057	2247	2437	2627
C2 <sub>4/1</sub> C2 <sub>2/1</sub>	565 695	755 885	945 1075	1135 1265	1325 1455	1515 1645	1705 1835	1895 2025	2085 2215
C3 <sub>4/1</sub> C3 <sub>2/1</sub>	460 590	650 780	840 970	1030 1160	1220 1350	1410 1540	1600 1730	1790 1920	1980 2110
C4 <sub>4/1</sub> C4 <sub>2/1</sub>	101 202	149 297	197 392	245 487	293 582	341 677	389 772	437 867	485 962
m <sub>4/1</sub> m <sub>2/1</sub> [kg]	910 840	985 915	1060 990	1135 1065	1210 1140	1305 1230	1380 1305	1455 1380	1530 1455

ELECTROPALANE CU CABLU PENTRU CARUCIOR  
BGRINDA  
TIP GHF, GHM 6300, 8000, 10000, 12500 -2/1,-4/1  
CAPACITATEA DE RIDICARE INTRE 3200 -12500 kg

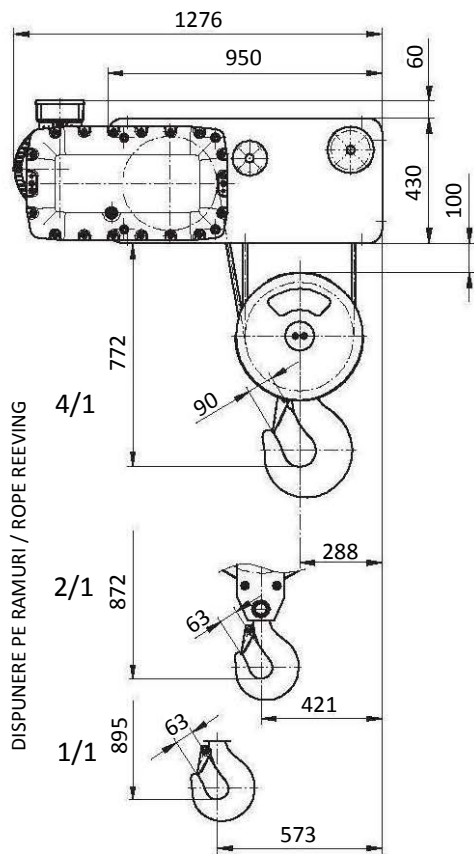
ELECTRIC WIRE ROPE HOISTS WITH DOUBLE-GIRDER  
TROLLEY (CRAB)  
TYPE GHF, GHM 6300, 8000, 10000, 12500 -2/1,-4/1  
LIFTING CAPACITIES 3200 - 12500 kg



TIP / TYPE	6M	9M	12M	15M	18M	21M	24M	27M	30M							
C1	1107	1297		1677	1867	2057	2247	2437	2627							
C2 <sub>min</sub>	950	1140		1520	1710	1900	2090	2280	2470							
C3 <sub>min</sub> 4/1	485	615	675	805	1055	1185	1245	1375	1435	1565	1625	1755	1815	1945	2005	2135
C4 <sub>4/1</sub>	101	202	149	297	245	487	293	582	341	677	389	772	437	867	485	962
m <sub>4/1</sub>	920	850	969	899	1067	997	1116	1046	1165	1095	1214	1144	1263	1193	1312	1242

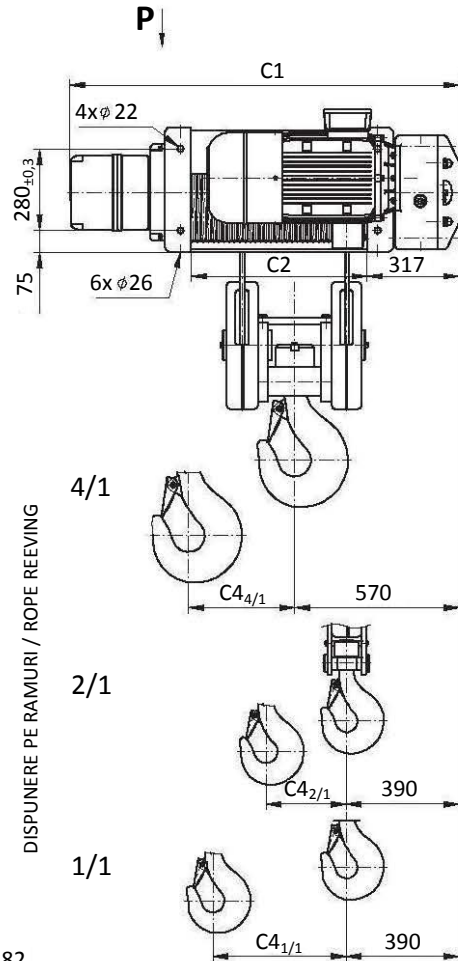
ELECTROPALANE CU CABLU FARA CARUCIOARE (FIXE)  
TIP GHF, GHM 16000, 20000, 25000 -1/1, -2/1,-4/1  
CAPACITATEA DE RIDICARE INTRE 4000 -25000 kg

ELECTRIC WIRE ROPE STATIONARY HOISTS  
TYPE GHF, GHM 16000, 20000, 25000 -1/1, -2/1,-4/1  
LIFTING CAPACITIES 4000 - 25000 kg

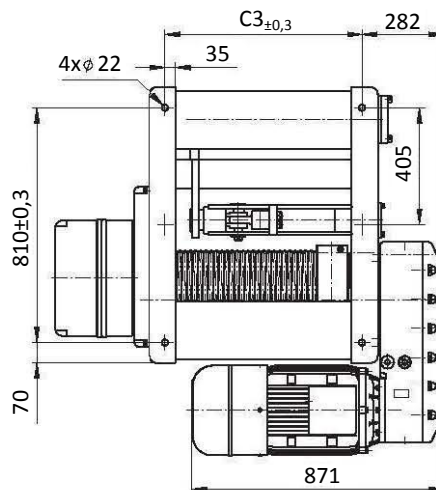


DISPUNERE PE RAMURI / ROPE REEVING

VEDERE P / VIEW P



DISPUNERE PE RAMURI / ROPE REEVING

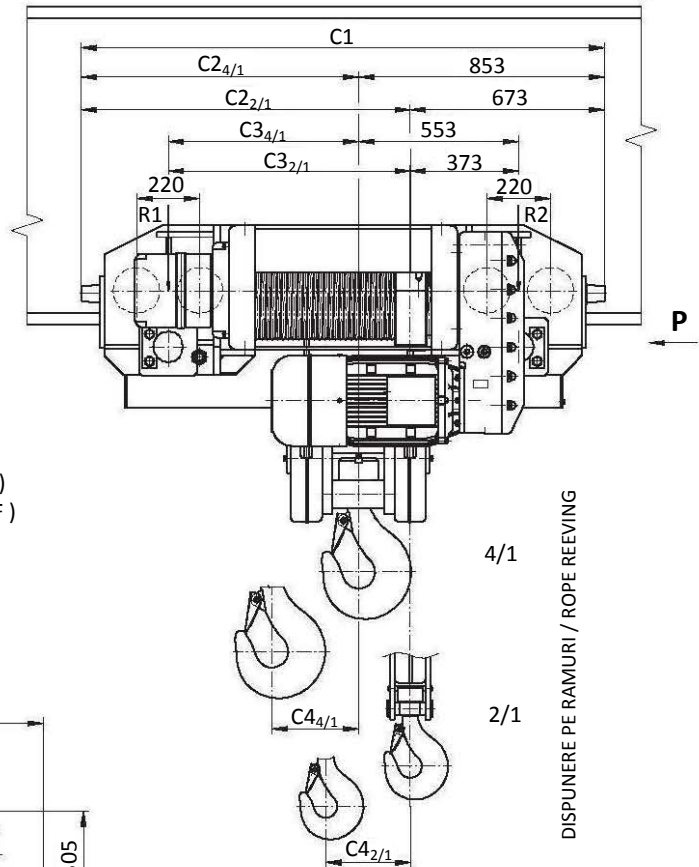
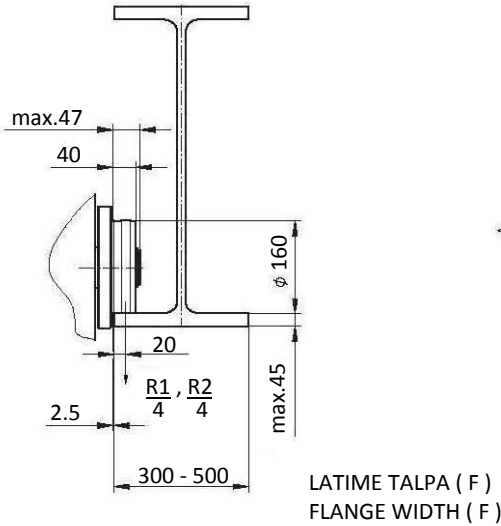


CABLU Ø 16mm / ROPE Ø 16mm

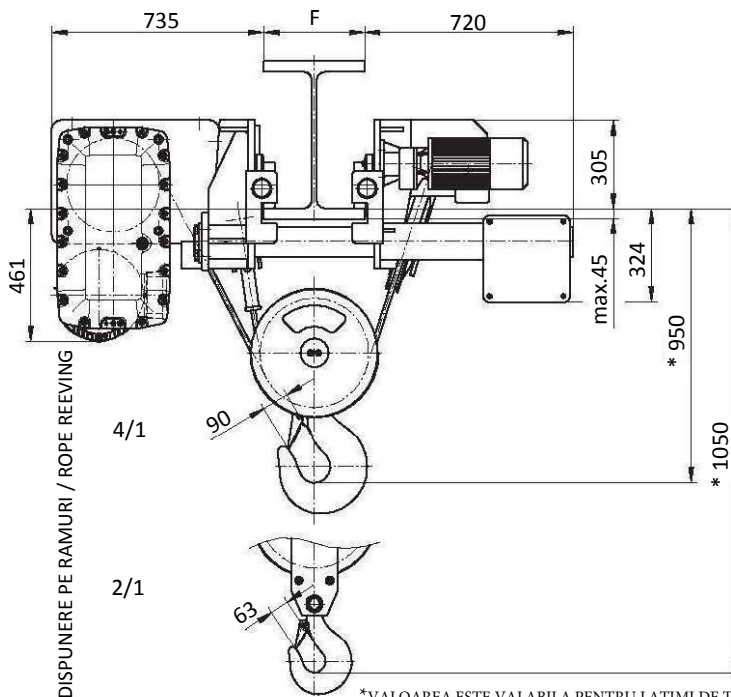
TIP / TYPE		6M		9M		12M		15M		18M		21M		24M		27M		30M										
C1	C3	1345	680	1565	900	1785	1120	2005	1340	2225	1560	2445	1780	2665	2000	2885	2220	3105	2440									
C2	C4 <sub>1/1</sub>	610	460	830	680	1050	900	1270	1120	1490	1340	1710	1560	1930	1780	2150	2000	2370	2220									
C4 <sub>4/1</sub>	C4 <sub>2/1</sub>	115	230	170	340	225	450	280	560	335	670	390	780	445	890	500	1000	555	1110									
m <sub>4/1</sub>	m <sub>2/1</sub>	1085	875	830	1170	960	915	1255	1045	1000	1340	1130	1085	1425	1215	1170	1570	1330	1255	1655	1415	1340	1740	1500	1425	1825	1585	1510

ELECTROPALANE CU CABLU PENTRU CARUCIOR  
 MONOGRINDA - INALTIME MICA  
 TIP GHF, GHM 16000, 20000, 25000 -2/1,-4/1  
 CAPACITATEA DE RIDICARE INTRE 8000 -25000 kg

ELECTRIC WIRE ROPE HOISTS WITH MONORAIL  
 TROLLEY - SHORT HEADROOM  
 TYPE GHF, GHM 16000, 20000, 25000 -2/1,-4/1  
 LIFTING CAPACITIES 8000 - 25000 kg



VEDERE P / VIEW P



GREUTATEA PE ROATA:  
 WHEEL LOAD:

$$R1 = \frac{(553+C4)}{(C3+553)} \times Q_{max} + 0,4mg$$

$$R2 = \frac{C3}{(C3+553)} \times Q_{max} + 0,6mg$$

$$R1 = \frac{(373+C4)}{(C3+373)} \times Q_{max} + 0,4mg$$

$$R2 = \frac{C3}{(C3+373)} \times Q_{max} + 0,6mg$$

Q<sub>max</sub>=CAPACITATEA MAXIMA DE RIDICARE  
 =MAXIMAL LIFTING CAPACITY  
 mg=GREUTATEA ELECTROPALANULUI  
 =WEIGHT OF HOIST

\*VALOAREA ESTE VALABILA PENTRU LATIMI DE TALPA PANA LA 300 mm  
 \*THE VALUE IS VALID FOR FLANGE WIDTH TO 300 mm

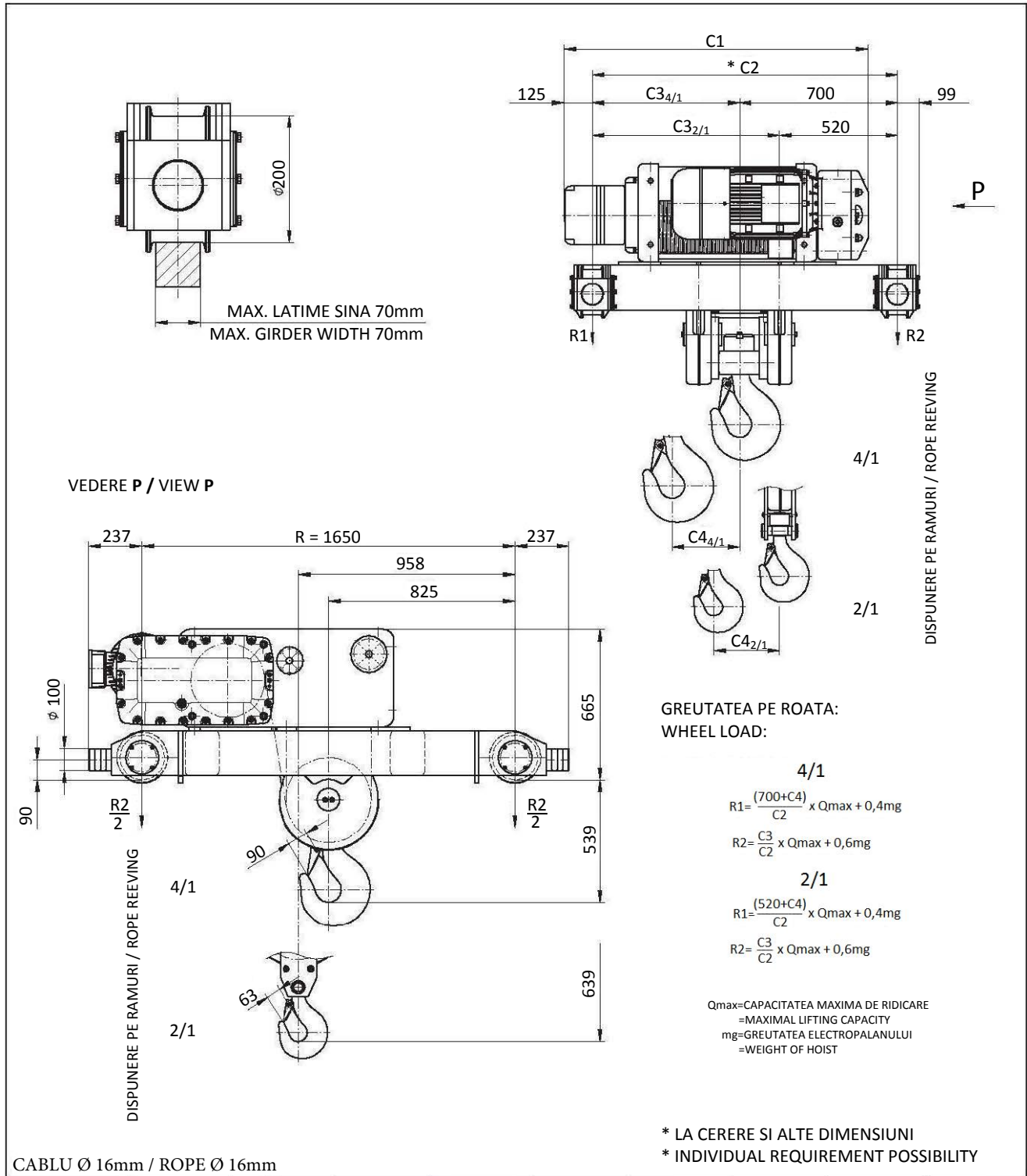
CABLU Ø 16mm / ROPE Ø 16mm

TYP / TYPE	6M	9M	12M	15M	18M	21M	24M	27M	30M
C1	1810	2030	2250	2470	2690	2910	3130	3350	3570
C2 <sub>4/1</sub> C2 <sub>2/1</sub>	957 1137	1177 1357	1397 1577	1617 1797	1837 2017	2057 2237	2277 2457	2497 2677	2717 2897
C3 <sub>4/1</sub> C3 <sub>2/1</sub>	657 837	877 1057	1097 1277	1317 1497	1537 1717	1757 1937	1977 2157	2197 2377	2417 2597
C4 <sub>4/1</sub> C4 <sub>2/1</sub>	115 230	170 340	225 450	280 560	335 670	390 780	445 890	500 1000	555 1110
m <sub>4/1</sub> m <sub>2/1</sub> [kg]	2250 1970	2370 2090	2490 2210	2610 2330	2730 2450	2850 2570	2970 2690	3090 2810	3210 2930



ELECTROPALANE CU CABLU PENTRU CARUCIOR  
 BIGRINDA  
 TIP GHF, GHM 16000, 20000, 25000 -2/1,-4/1  
 CAPACITATEA DE RIDICARE INTRE 8000 -25000 kg

ELECTRIC WIRE ROPE HOISTS WITH DOUBLE-GIRDER  
 TRANSVERSE TROLLEY (CRAB)  
 TYPE GHF, GHM 16000, 20000, 25000 -2/1,-4/1  
 LIFTING CAPACITIES 8000 - 25000 kg

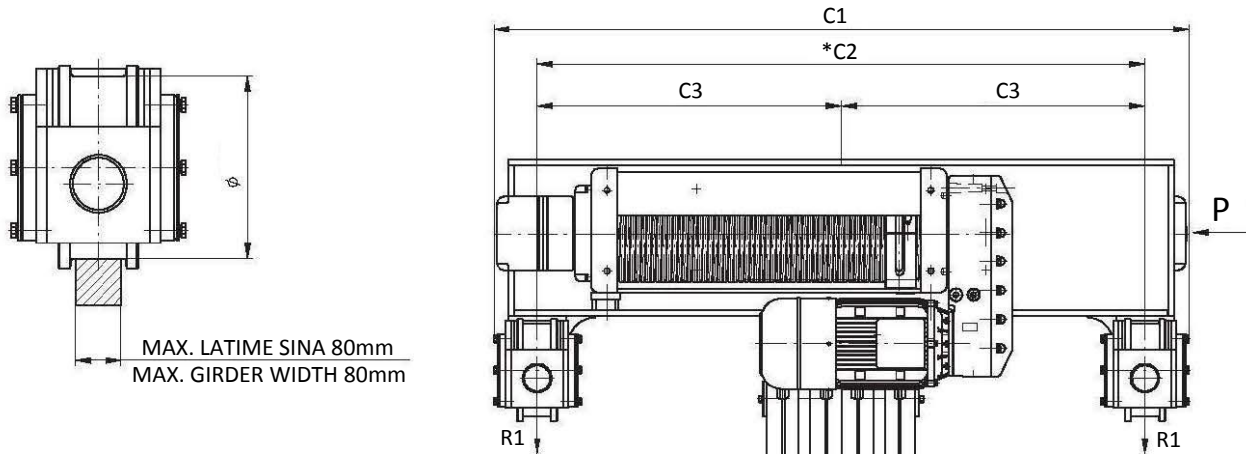


CABLU Ø 16mm / ROPE Ø 16mm

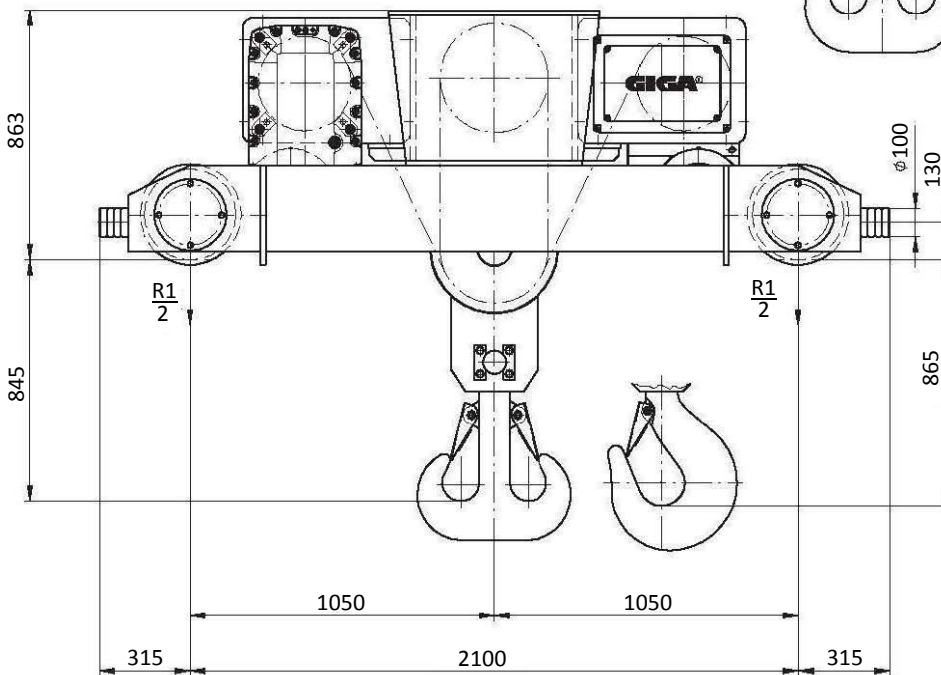
TIP / TYPE	6M	9M	12M	15M	18M	21M	24M	27M	30M
C1	1345	1565	1785	2005	2225	2445	2665	2885	3105
C2 <sub>min</sub>	1350	1570	1790	2010	2230	2450	2670	2890	3110
C3 <sub>min</sub> <sub>4/1</sub> C3 <sub>min</sub> <sub>2/1</sub>	650 830	870 1050	1090 1270	1310 1490	1530 1710	1750 1930	1970 2150	2190 2370	2410 2590
C4 <sub>4/1</sub> C4 <sub>2/1</sub>	115 230	170 340	225 450	280 560	336 670	390 780	445 890	500 1000	555 1110
m <sub>4/1</sub> m <sub>2/1</sub>	1395 1185	1505 1295	1610 1400	1720 1510	1830 1620	1995 1755	2100 1865	2210 1970	2320 2080

ELECTROPALANE CU CABLU PENTRU CARUCIOR  
 BIGRINDA  
 TIP GHF, GHM 32000, 40000, 50000 -2x4/1  
 CAPACITATEA DE RIDICARE INTRE 32000 -50000 kg

ELECTRIC WIRE ROPE HOISTS WITH DOUBLE-GIRDER  
 TRANSVERSAL TROLLEY (CRAB)  
 TYPE GHF, GHM 32000, 40000, 50000 -2x4/1  
 LIFTING CAPACITIES 32000 - 50000 kg



VEDERE P / VIEW P



GREUTATEA PE ROATA:  
 WHEEL LOAD:

$$R1 = \frac{C3}{C2} \times Q_{max} + 0,5mg$$

Q<sub>max</sub>= CAPACITATEA MAXIMA DE RIDICARE  
 =MAXIMAL LIFTING CAPACITY  
 mg=GREUTATEA ELECTROPALANULUI  
 =WEIGHT OF HOIST

\* LA CERERE SI ALTE DIMENSIUNI  
 \* INDIVIDUAL REQUIREMENT POSSIBILITY

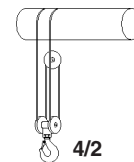
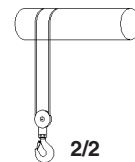
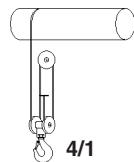
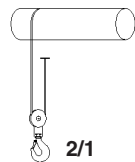
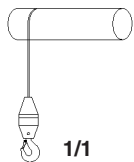
CABLU Ø 16mm / ROPE Ø 16mm

TIP / TYPE	6M	9M	12M	15M	18M	21M	24M	27M	30M
C1	2402	2402	2402	2842	3282	3722	4162	4602	5042
C2	2100	2100	2100	2540	2980	3420	3680	4300	4740
C3	1050	1050	1050	1270	1490	1710	1930	2150	2370
m <sub>32T</sub> m <sub>40T</sub> m <sub>50T</sub> [kg]	5290 5560 5660	5440 5710 5710	5590 5860 5860	5845 6150 6150	6100 6440 6440	6840 6840 7045	7140 7140 7360	7430 7665 7980	7720 7970 8360

**Datele tehnice ale motoarelor**  
**The technical data of motors**

Puterea nominala Rated power	Voltaj Voltage	Curent nominal Rated current	Frecventa Frequency	Viteza Speed	Modul de functionare Operating mode	Number of switch	Clasa de protectie Protection class
kW	V	A	Hz	min <sup>-1</sup>	%ED	c/h	-
0.45/3.2	400	2.6/10.7	50	400/2800	S3-40%	240	IP 54
0.67/4	400	4.5/10	50	410/2820	S3-20/40%	300/150	IP 54
0.8/4.8	400	5.5/11	50	400/2750	S3-20/40%	300/150	IP 54
1.25/7.6	400	8/16.5	50	460/2890	S3-40/60%	300/150	IP 54
1.5/9.5	400	9/22	50	460/2900	S3-40/60%	300/150	IP 54
2.6/16	400	15/33	50	460/2900	S3-30%	180	IP 54
0.04/0.18	400	0.31/0.48	50	600/2750	S3-40/60%	240	IP 54
0.09/0.37	400	0.57/0.95	50	620/2800	S3-40/60%	240	IP 54
0.12/0.55	400	0.62/1.3	50	620/2800	S3-40/60%	240	IP 54
0.18/0.75	400	0.8/1.8	50	620/2800	S3-40/60%	240	IP 54

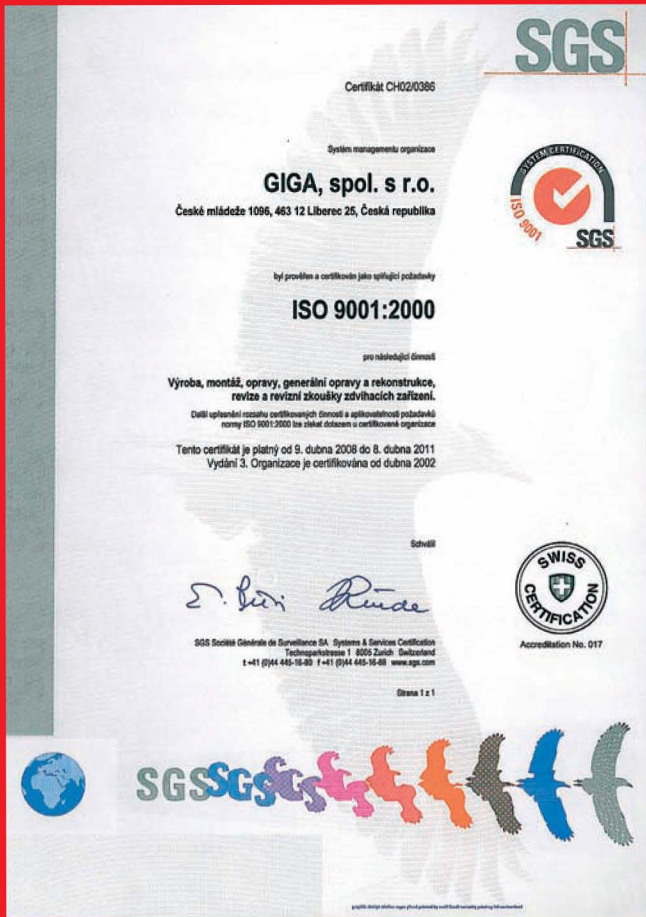
**Disponere pe ramuri / Rope reeving**



**Nota / Note:**

**Nota | Note:**

Datorita dezvoltarii tehnice, producatorul are dreptul sa faca schimbari pentru a imbunatati calitatea produselor si in avans, sa indeplineasca noi reglementari si recomandari tehnice.  
 The manufacturer, due to the technical development, has the right of changes in order to improve the quality of the products and, ahead of time, to fulfill new technical regulations and recommendations.



**GIGA**<sup>®</sup>, spol. s r.o.



**S.C. DUCA CRANES S.R.L.**  
Com. Nițchidorf, nr. 78 , Județ Timiș  
Telefon: 0723 708 028  
Email: office@ducacranes.ro  
www.ducacranes.ro