

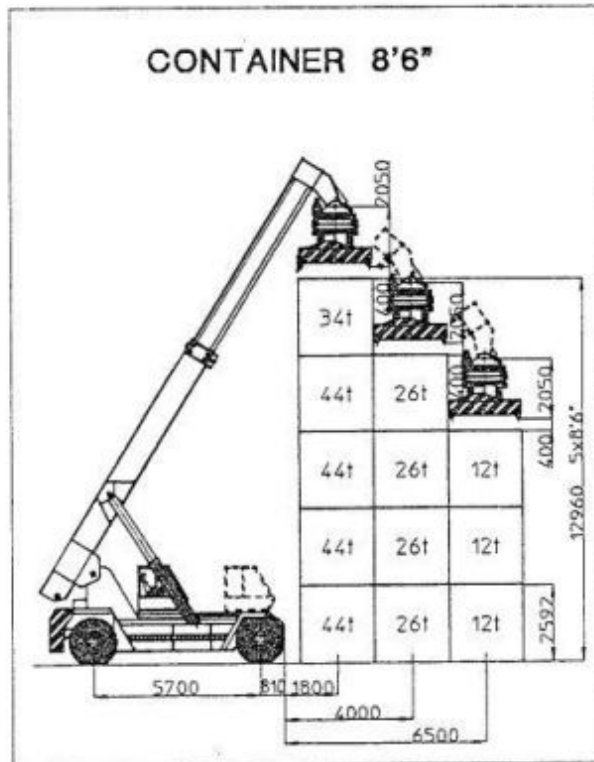
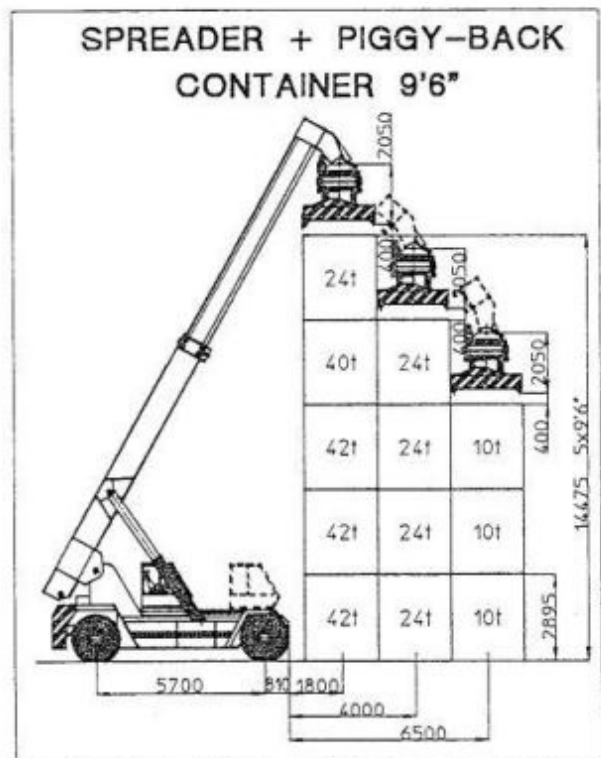
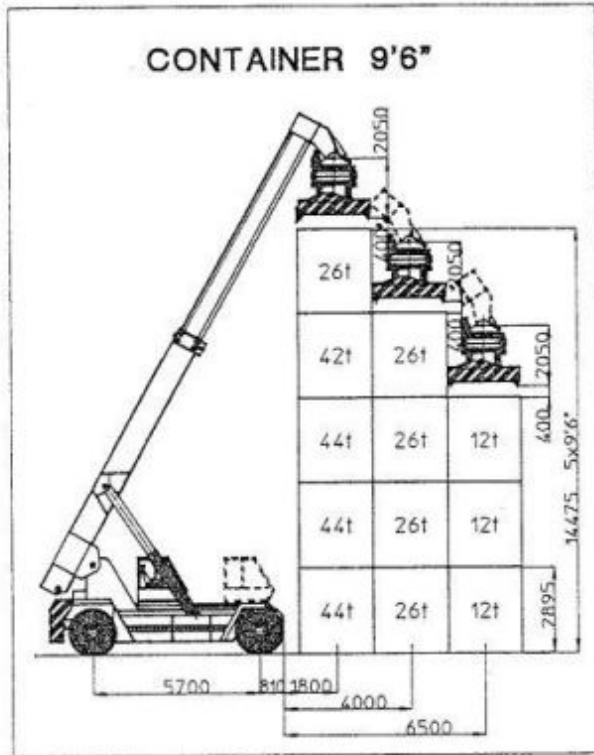


M 220

ORMIG S.p.A

15076 **OVADA** (AL) ITALY
P.O. BOX 63

TEL. 39-0-143-80051
TLX. 210071 ORMIG I
FAX. 39-0-143-86568



**CARATTERISTICHE
TECNICHE**

**TECHNICAL
FEATURES**

**TECHNISCHE
BESCHREIBUNG**

**CARACTERISTIQUE
TECHNIQUE**

DIMENSIONS

Transport height/mm 4300
 Transport length/mm 11160 (with spreader)
 Width /mm 4100
 Turning radius /mm 8280

LIFTING HEIGHT

Under twistlocks / m 14875

BOOM

Lifting angle from 0° to 60°
 Lifting cylinders Two cylindrs. equipped with safety valves

Lifting speed
 with load / without load m/s 0.22/0.25
 Lowering speed
 with load / without load m/s 0.25/0.22

VEHICLE WEIGHT

total kg. 63000
 with spreader total kg. 71500
 with spreader + piggy-back total kg. 75500

AXLES

Front axle ... Planetary driving axle, with hub reduction
 Rear axleSteering axle, with double stem cylinder

WHEELS

Front 18.00-25 40 PR
 Rear 18.00-25 40 PR

BRAKES

Service brakes Oil bath discs at front axle
 dry discs at rear axle
 Parking brakes Dry spring actuated disc brake
 on the drive line

TRANSMISSION

Make-model Clark 34000 - series
 Clutch type Torque converter
 Gear box Power Shift
 No. of gears 4-4
 Gear shifting Electric

ENGINE

Make-model ~~WEEO type 0300~~ **MERCEDES**
 Type 4-stroke diesel, turbocharged intercooler
 Displacement/l 7,685
 Power 197 Kw at 2200 r/min
 Max.torque/Nm 942
 No. of cylinders 6
 Compression ratio 17,6
 Equipment with double filter at full delivery
 for lubrication oil
 Fuel tank capacity/l 500

ELECTRICAL INSTALLATION

Generator 90A/24v
 Batteries 2/143 Ah

HYDRAULIC SYSTEM

Pumps1 gears double pump, 1 gears triple pump
 System pressure 240 bar
 Control valves fitted at all the cylinders
 Filtering 10-micron return line filter
 Tank capacity 800l

SPREADER

Hydraulically adjustable for ISO 20',30',40', and
 35' Sealand containers
 Rotation +/- 120°
 Sideshift +/- 800 mm
 Powered side tilt +/- 6°
 Damping with hydraulic cylinders.
 Twist locks, with safety devices.

PERFORMANCES

Travel speed
 with load / without load km/h 22/25
 Gradeability
 with load / without load % 15/24
 Tipping capacities safety factor 33%

OPERATORS CAB

Central positionned with wide visibility
 Entrance sliding rear door
 High acoustic and thermal isolator
 Horizontal motion controlled from cab
 Spreader raising and positioning are
 controlled by one sender only placed at
 right side of the seat

STANDARD EQUIPMENT

Electronic anti-tipping device with display in the cab
 Piggyback attachment for trailers handling
 The cab is equipped with all necessary controls
 and devices for driving and operation of the vehicle

ON REQUEST EQUIPMENT

Automatic lubrication system
 Air conditioner
 45° adjustment for standard spreader

DIMENSIONI

OVERALL DIMENSIONS

MASSE

DIMENSIONS

