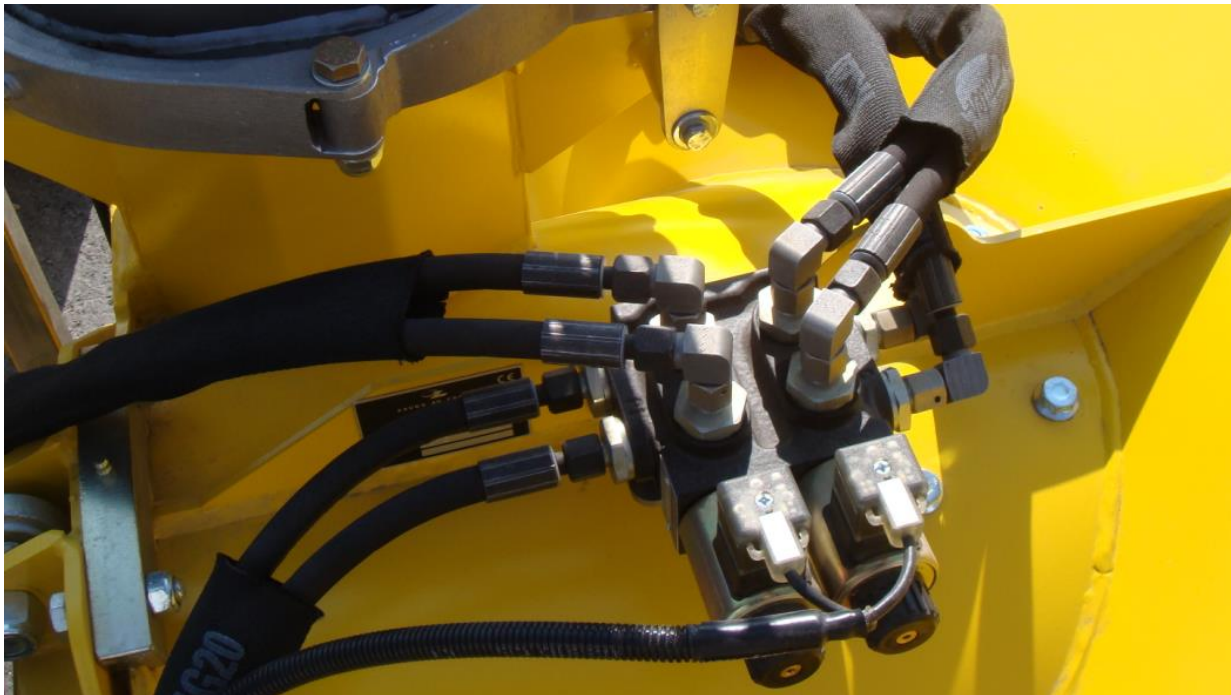


The introduction of stackable circuit selector valves

UTILSERV



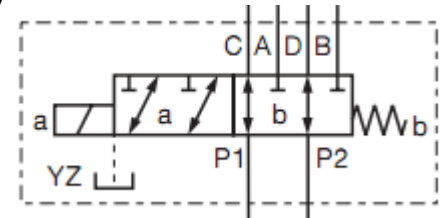
Contact person: Epure Gabriel
E-mail: gabiepure@gmail.com

TECHNICAL DATA OF SELECTOR VALVES

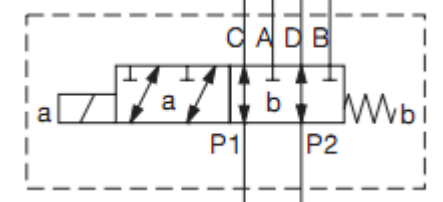


MODEL PRESSURE (Mpa) FLOW(L/Min)

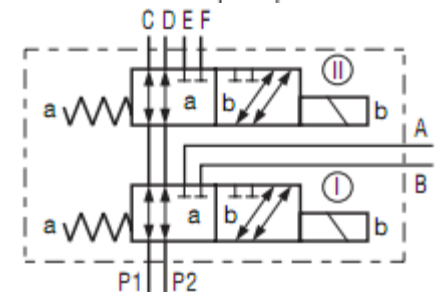
MOP06 31.5 50



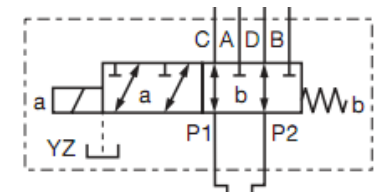
KVH6 31.5 50



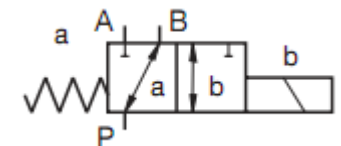
2KVH 21 50



SVK10 31.5 80



HVC-3/2 21 60



Contact person: Epure Gabriel
E-mail: gabiepure@gmail.com

The introduction of stackable circuit selector valves

USAGE: SINGLE OR MODULAR

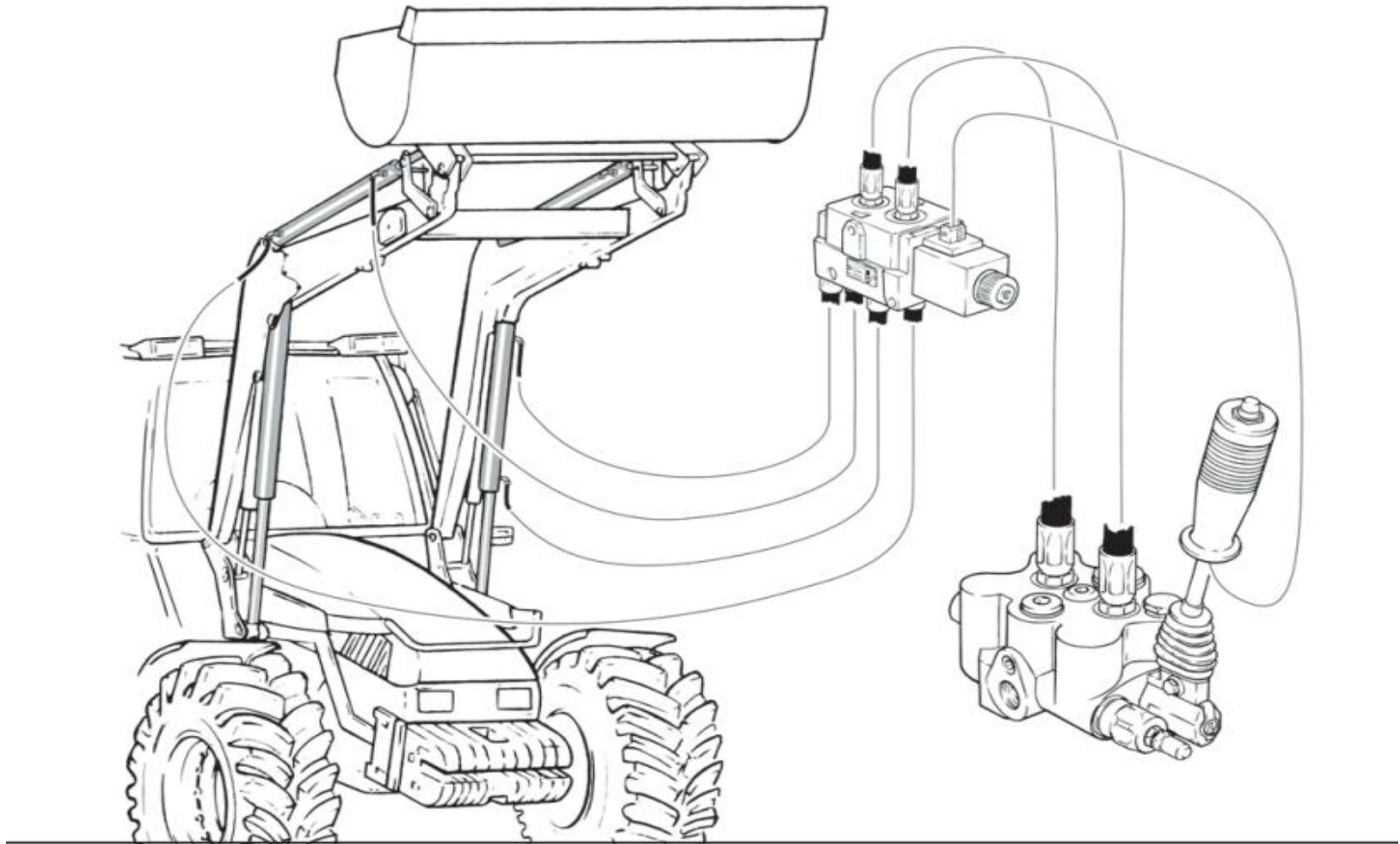
THE ACTION OF TWO EXECUTIVE ELEMENTS CAN BE CONTROLLED BY ONE SELECTOR VALVES ONLY

THOSE N+1 ACTION EXECUTIVE ELEMENTS CAN BE CONTROLLED BY N PCS OF SELECTOR VALVES



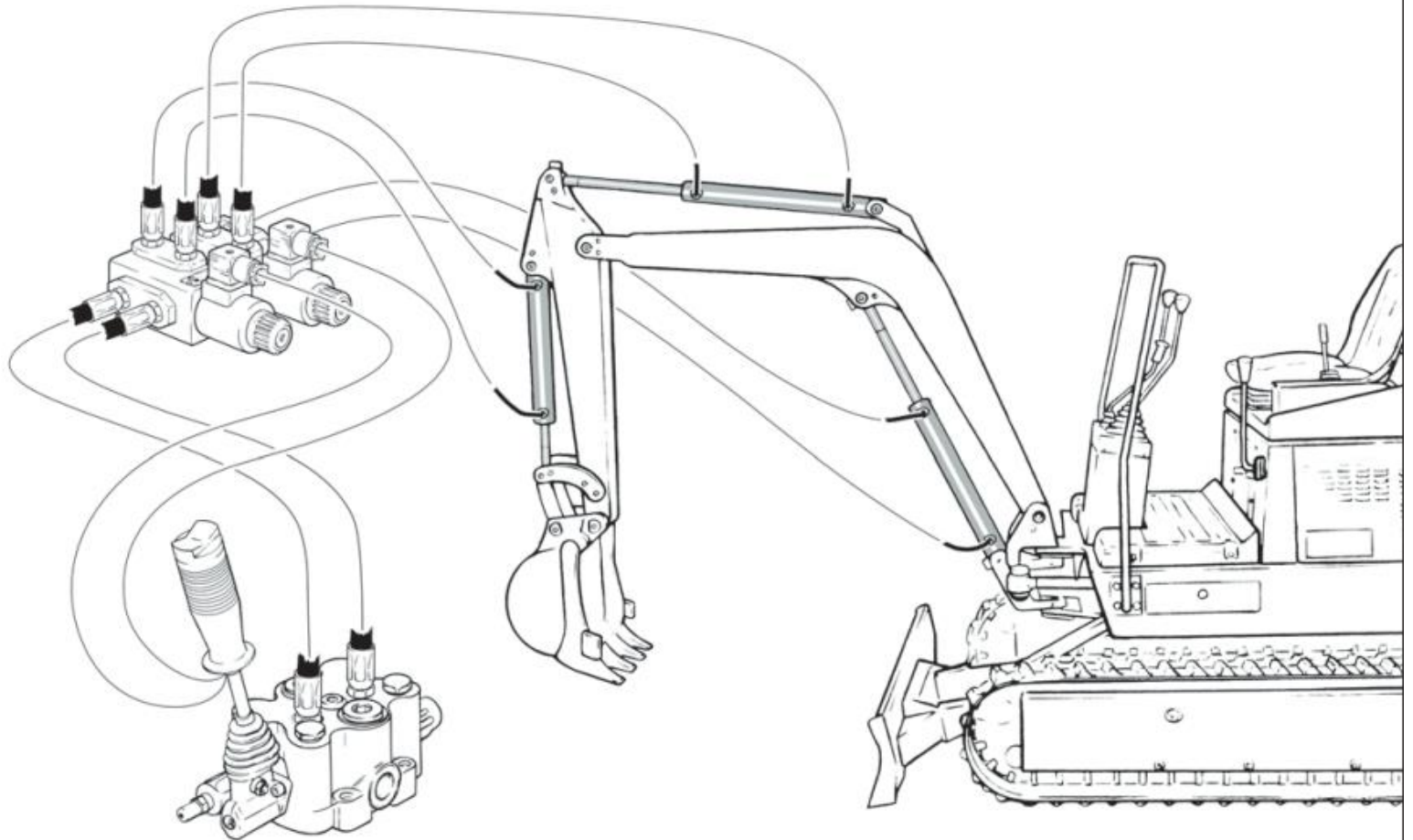
Contact person: Epure Gabriel
E-mail: gabiepure@gmail.com

THE APPLICATION IN THE CONSTRUCTION/AGRICULTURE



Contact person: Epure Gabriel
E-mail: gabiepure@gmail.com

THE APPLICATION IN THE EXCAVATOR



Contact person: Epure Gabriel
E-mail: gabiepure@gmail.com

IMPORTANT:

1,THIS SELECTOR VALVES CAN REPLACE THE PROPORTIONAL ELEMENT WHICH THE PRICE IS VERY EXPENSIVE,THAT CUSTOMER COULD SAVE LOTS OF COST IF THEY CHOOSE THIS VALVE

2,THIS SELECTOR VALVES COULD SAVE THE QUANTITY OF THE HANDLE OF THE ELECTRIC CONTROL AND HANDLE OF THE HYDRAULIC CONTROL,AND IT COULD REPLACE THE MANUAL OPERATED MULTIPLE VALVES

3,THE MENU OF THE ELECTRIC CONTROL TO THE VALVES CAN BE INTEGRATED ON THE HANDLE OF THE CONTROLLER THAT IT IS AN ADVANTAGE TO IMPROVE THE OPERATION WHEN USERS WERE OPEATING THE EQUIPMENT

4,THE SELECTTOR VALVES COULD SAVE THE LENGTH OF THE HOSE AND THE QUANTITY OF THE FITTINGS