

## **CAST IRON Y STRAINER FLANGED PN 10/16 DIN 3202-1 F1 BLUE**

Cast iron Y strainer flanged PN10/16 for filtration of heating, water distribution, water treatment and irrigation networks.  
Strainer with removable filter and bolted bonnet  
Threaded BSP draining cap allowing to install a draining valve.

**Certificate**

**3.1**



**Size :** DN15 to DN300  
**Connection :** Flanges RF PN10/16  
**Min Temperature :** -10°C  
**Max Temperature :** +120°C  
**Max Pressure :** 16 Bars for PN16 types  
**Caractéristiques :** Removable stainless steel filter  
Bolted bonnet with draining cap  
Silicone Acrylic painting

**Materials :** Cast iron EN GJL-250

**CAST IRON Y STRAINER FLANGED PN 10/16 DIN 3202-1 F1 BLUE**

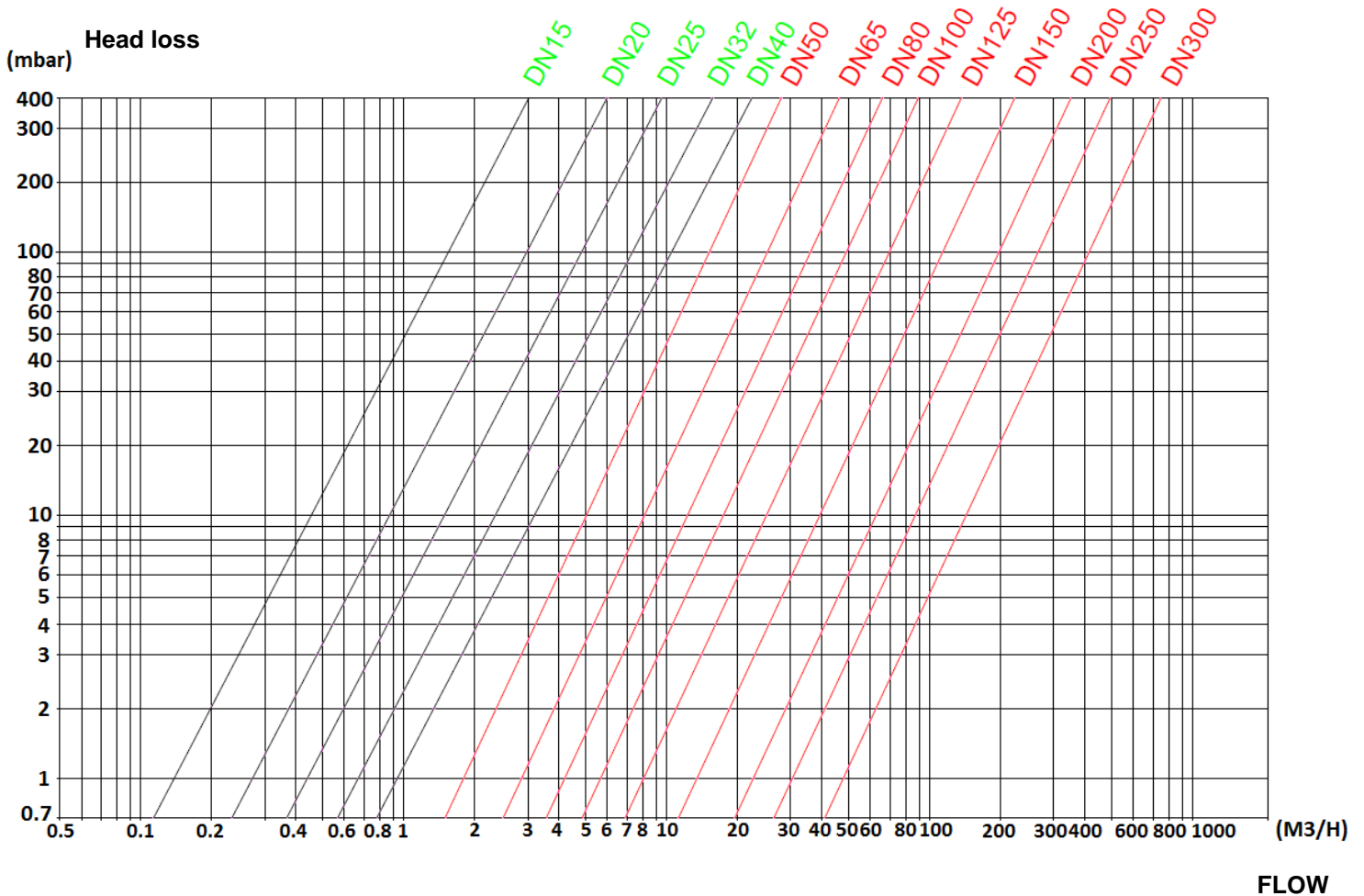
**SPECIFICATIONS :**

- Removable stainless steel filter
- R.F. flanges PN10/16
- Horizontal or vertical position with descendant fluid (respect the flow direction indicated by the arrow )
- Mesh 1mm from DN 15 to 50, 1.3 mm from DN 65 to 150 and 1.6 mm from DN 200 to 300
- Bolted bonnet with draining cap threaded BSP
- Silicone acrylic painting RAL 5005 color, 80-100µm thickness

**USE :**

- For water, water treatment, heating, irrigation
- Min Temperature Ts : - 10°C
- Max Temperature Ts :+ 120°C
- Max Pressure Ps : 16 bars for types PN16, 10 bars for types PN10

**HEAD LOSS GRAPH :**

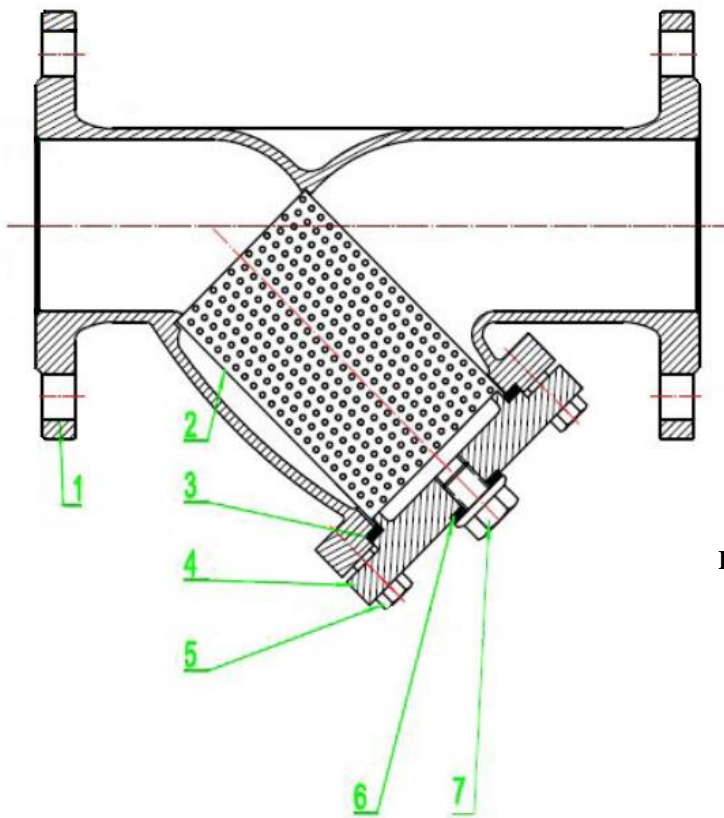


**CAST IRON Y STRAINER FLANGED PN 10/16 DIN 3202-1 F1 BLUE**

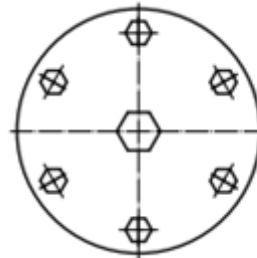
**RANGE :**

- Cast iron Y Strainer R.F. flanges PN10/16 from DN 15 to 300 Ref.221

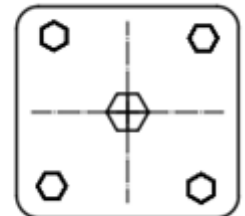
**MATERIALS :**



**BONNET DN125-300**



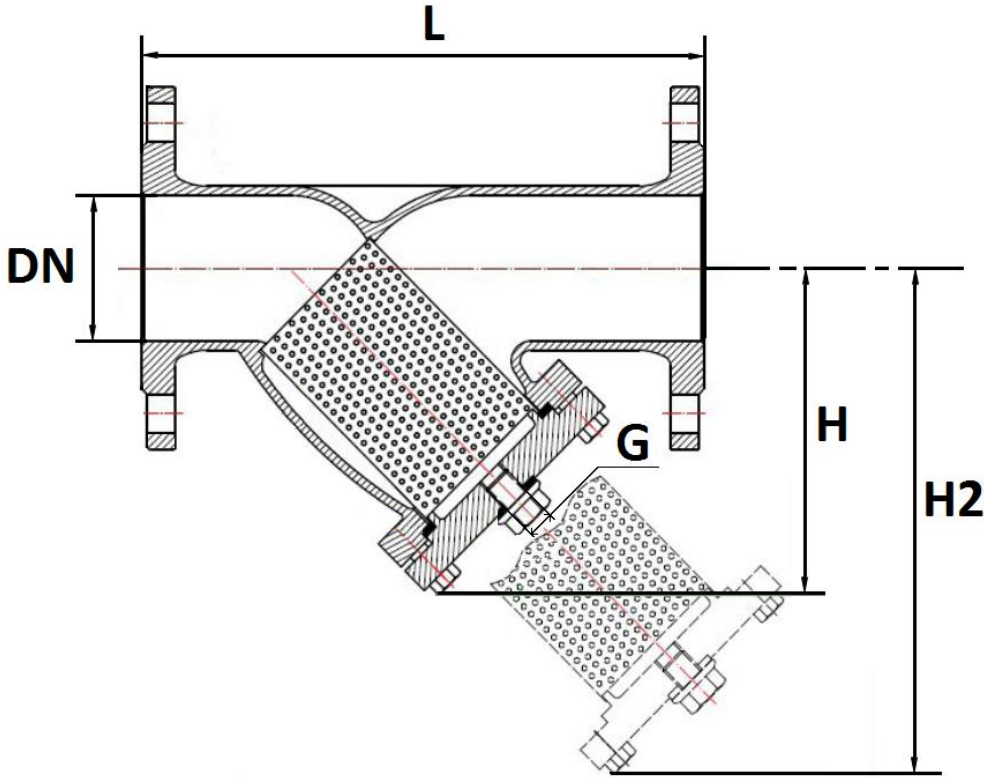
**BONNET DN15-100**



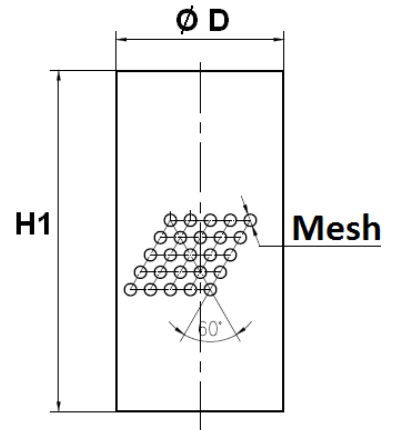
Item	Designation	Materials
1	Body	Cast iron EN GJL-250
2	Filter	AISI 304
3	Bonnet gasket	Stainless steel + graphite
4	Bonnet	Cast iron EN GJL-250
5	Bolting	Steel 8.8
6	Draining gasket	Stainless steel + graphite
7	Draining cap	Carbon steel ASTM A105

**CAST IRON Y STRAINER FLANGED PN 10/16 DIN 3202-1 F1 BLUE**

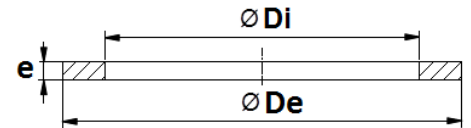
SIZE ( in mm ) :



Filter size :



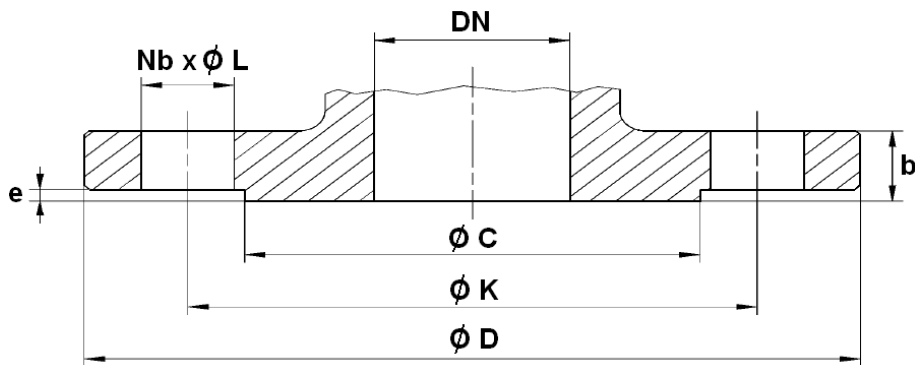
Bonnet gasket size :



DN	15	20	25	32	40	50	65	80	100	125	150	200	250	300
L	130	150	160	180	200	230	290	310	350	400	480	600	730	850
H	68	78	85	104	107	124	147	161	193	257	291	357	460	530
H2	105	118	130	154	169	199	237	260	321	410	466	570	666	786
G (drain BSP)	1/2"									3/4"				
Ø D	19	26	31	38	42	52	67	82	102	133	159	208	250	320
H1	51	56	63	70	88	105	127	140	180	215	247	300	340	381
Mesh	1						1.3				1.6			
Ø Di	21	27.5	32	45	45	54	72	86	104	138	162	212	252	324
Ø De	33	36	45	55	55	66	86	102	120	154	178	228	278	350
E	4.3	4	4.3	3.7	3.7	4.3	4.3	4.4						
Weight (Kg)	2.3	3	3.5	5	6	8	12	14	18	29.5	38.8	68	120	176
Ref.	221015	221020	221025	221032	221040	221050	221065	221080	221100	221125	221150	221200	221250	221300

**CAST IRON Y STRAINER FLANGED PN 10/16 DIN 3202-1 F1 BLUE**

FLANGES SIZE PN16 ( in mm ) :

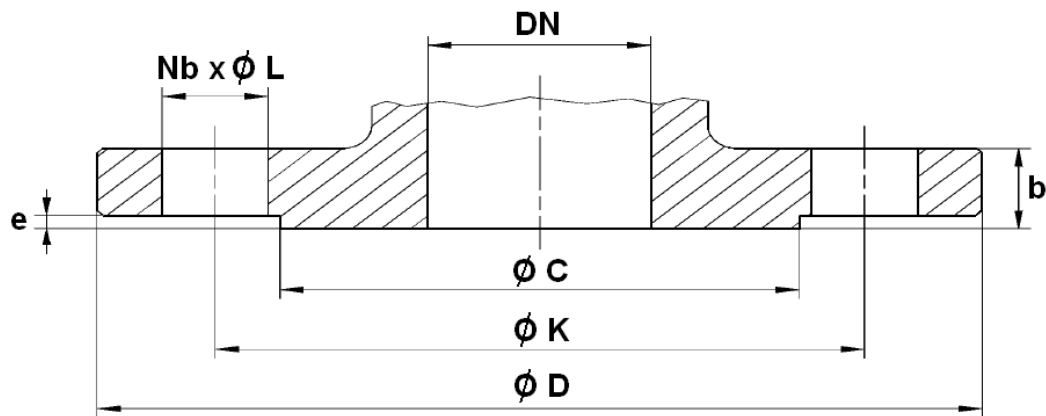


PN	PN10/16								
DN	15	20	25	32	40	50	65	80	100
Ø C	45	57	65	76	84	99	118	132	156
Ø D	95	105	115	140	150	165	185	200	220
Ø K	65	75	85	100	110	125	145	160	180
Nb x Ø L	4 x 14	4 x 14	4 x 14	4 x 18	4 x 18	4 x 18	4 x 18	8 x 18	8 x 18
b	16	16	16	16	18	20	20	20	22
e	1.5	1.5	1.5	1.5	1.5	2	2	2	2
Ref.	221015	221020	221025	221032	221040	221050	221065	221080	221100

PN	PN10/16		PN16		
DN	125	150	200	250	300
Ø C	184	211	263	319	370
Ø D	250	285	340	405	460
Ø K	210	240	295	355	410
Nb x Ø L	8 x 18	8 x 23	12 x 23	12 x 27	12 x 27
b	26	26	30	32	36
e	2	2.5	2.5	2.5	3
Ref.	221125	221150	221200	221250	221300

**CAST IRON Y STRAINER FLANGED PN 10/16 DIN 3202-1 F1 BLUE**

FLANGES SIZE PN10 ( in mm ) :



PN	PN10		
DN	200	250	300
Ø C	263	320	370
Ø D	340	395	445
Ø K	295	350	400
Nb x Ø L	8 x 23	12 x 23	12 x 23
b	30	32	36
e	2.5	2.5	3
Ref.	221201	221251	221301

**CAST IRON Y STRAINER FLANGED PN 10/16 DIN 3202-1 F1 BLUE****STANDARDS :**

- Manufacturer certified ISO 9001 : 2015
- DIRECTIVE 2014/68/EU : Products excluded (article 4, § 3)
- Certificate 3.1 on request
- Pressure tests according to EN 12266-1
- Length according to EN 558 series 1 (DIN 3202-1 F1 – NF 29354)
- R.F. flanges according to EN 1092-2 PN10/16

**INSTALLATION POSITIONS :**

Vertical position ( descendand fluid )



Horizontal position

