

CAST IRON AXIAL DISC CHECK VALVE EPDM WITH SPRING FLANGED PN16

Cast iron axial disc check valve for heating and water distribution.

Cast iron EN GJL-250 body coated with anti-corrosion epoxy painting, stainless steel disc and EPDM seat.

All positions thanks to the stainless steel spring.

Certificate

3.1



Size : DN50 to DN300

Connection : Between flanges PN16 RF

Min Temperature : -10°C

Max Temperature : +110°C

Max Pressure : 16 Bars

Specifications : Stainless steel disc

All positions

Stainless steel spring

Epoxy painting

Weak headloss

Materials : Cast iron EN GJL-250 body

CAST IRON AXIAL DISC CHECK VALVE EPDM WITH SPRING FLANGED PN16

SPECIFICATIONS :

- All positions
- Respect the flow direction indicated by the arrow
- Flanged R.F. PN16
- Stainless steel disc with spring
- Opening pressure about 0.3 bar
- Epoxy blue RAL 003 painting 80 microns thickness
- Minimum backpressure for tightness : 1 bar

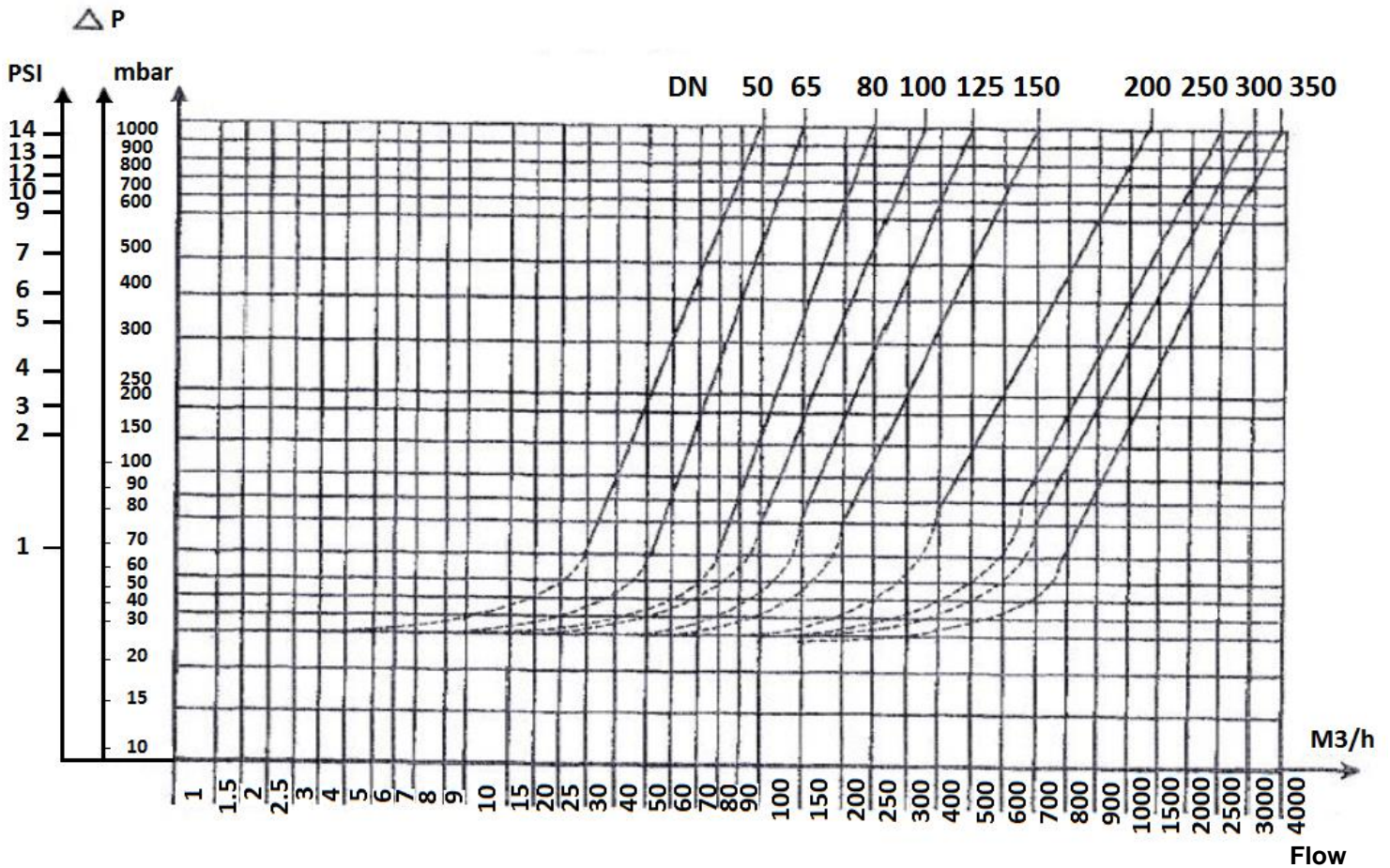
USE :

- Water distribution
- Min Temperature Ts : - 10°C
- Max Temperature Ts : + 110°C
- Max Pressure Ps : 16 bars

RANGE :

- Flanged PN16 DN50 to DN300 Ref.369

HEAD LOSS GRAPH Ref.369 :

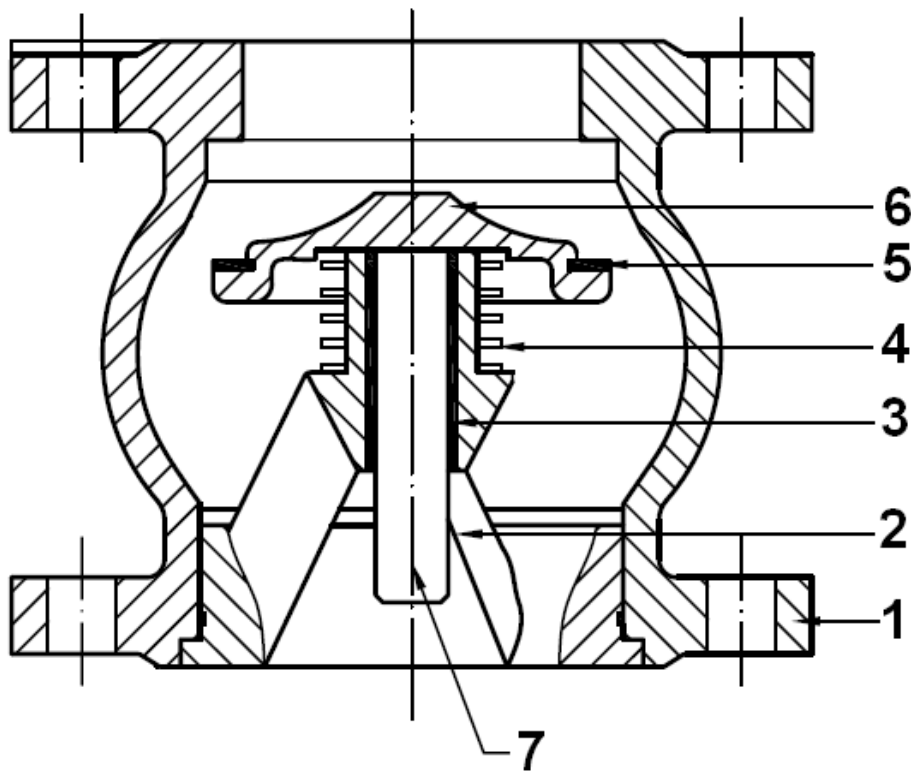


CAST IRON AXIAL DISC CHECK VALVE EPDM WITH SPRING FLANGED PN16

FLOW COEFFICIENT Kvs (in m3/h):

DN	50	65	80	100	125	150	200	250	300
Kvs (m3/h)	90	100	200	275	400	600	950	2000	2500

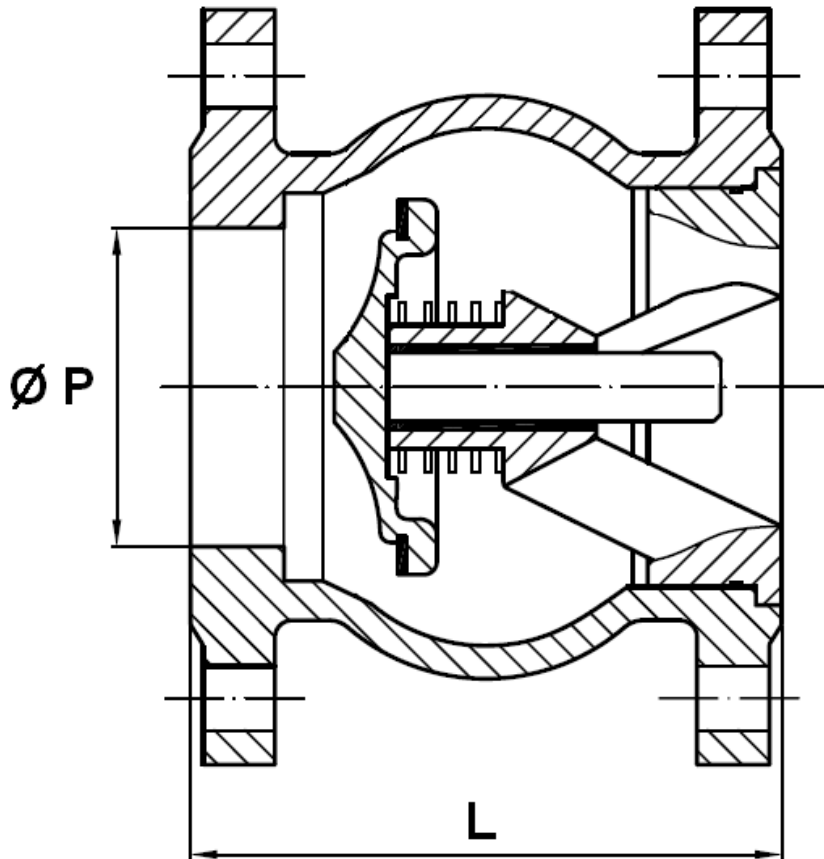
MATERIALS :



Item	Designation	Materials
1	Body	Cast iron EN-GJL-250
2	Guide	Cast iron EN-GJL-250
3	Bushing	Bronze
4	Spring	AISI 304
5	Gasket	EPDM
6	Disc	AISI 304
7	Shaft	AISI 416

CAST IRON AXIAL DISC CHECK VALVE EPDM WITH SPRING FLANGED PN16

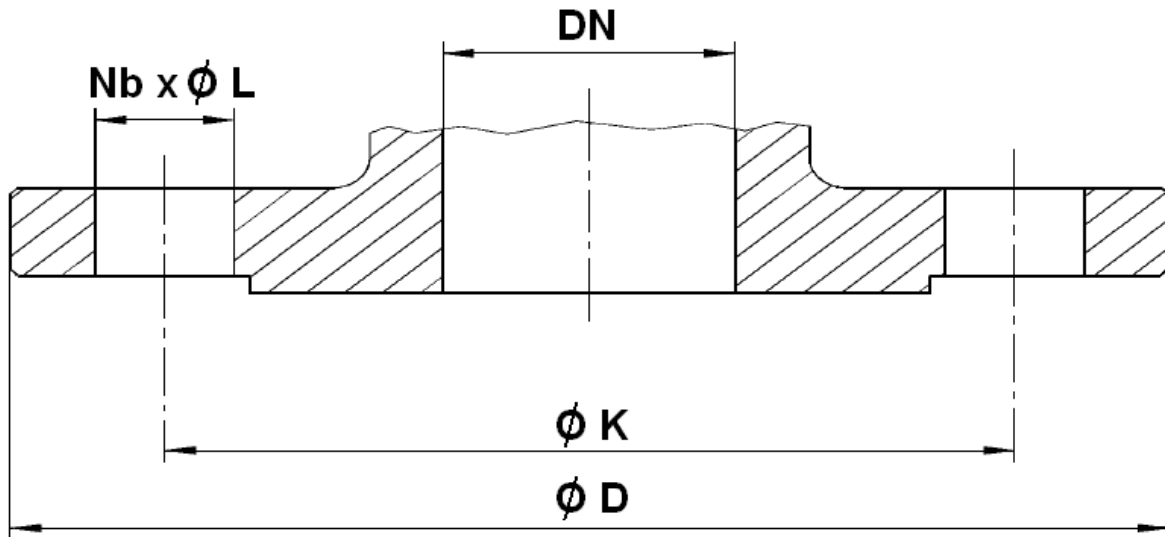
SIZE (in mm) :



DN	50	65	80	100	125	150	200	250	300
Ø P	56	65	81	105	125	150	200	250	300
L	100	120	135	165	200	231	288	354	395
Ø De	104	135	160	194	233	269	338	429	493
Weight (Kg)	6	9	11	15.5	23.5	34.5	56.5	97.5	145.5
Ref.	369050	369065	369080	369100	369125	369150	369200	369250	369300

CAST IRON AXIAL DISC CHECK VALVE EPDM WITH SPRING FLANGED PN16

FLANGES SIZE (in mm) :



DN	50	65	80	100	125	150	200	250	300
Ø D	165	185	200	220	250	285	340	405	460
Ø K	125	145	160	180	210	240	295	355	410
Nb x Ø L	4 x 19	4 x 19	8 x 19	8 x 19	8 x 19	8 x 23	12 x 23	12 x 28	12 x 28

STANDARDS :

- Manufacturer certified ISO 9001 : 2015
- DIRECTIVE 2014/68/EU : Products excluded from directive (Article 4, § 3)
- Certificate 3.1 on request
- Pressure tests according to API 598, table 6
- Flanged R.F. according to EN 1092-2 PN16